

GENERAL PURPOSE HIGH PRESSURE SOLENOID VALVES



UNOX Solenoid valves are two-or three way valves that operate with AC and DC electrical energy and provide control of various fluids (air, gas, fuel, steam, water, etc.). UNOX solenoid valves, consisting of body, sleeve, coil, diaphragm and core, are manufactured in two types as normally closed (to open the closed valve when the coil receives energy) and normally open (to close the open valve when it receives energy from the coil)

3/8" GENERAL PURPOSE HIGH PRESSURE NORMALLY OPEN SOLENOID VALF GEM 1112YBA



GEM 1112YBA

Product Description

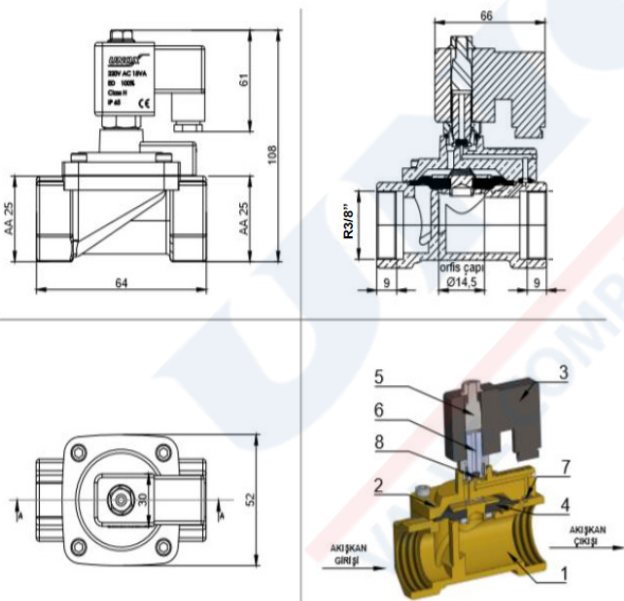
Normally Opened Solenoid Valve does not allow fluid to pass through initially. With the electric current coming to the coil to open the valve, the coil moves and pulls the core upwards and the mouth of the iris hole opens, so that the fluid under high pressure quickly moves to the outlet from the bypass hole, with this progress, the pressure inside drops very quickly and the pressure difference occurs inside. Due to this difference, the diaphragm lifts upwards by overcoming the spring force and the fluid is allowed to pass, thus the valve becomes open. All this happens in a very short time. Our products designed to get the best efficiency.

Suggestions

Mount the solenoid valve with the coil above. In the installation, such as strainer before the solenoid valve, etc. For high temperatures, we use more durable diaphragm and gasket material.

Usage

Valve Lock: Normally Open
Nominal Size: 3/8"
Nominal Pressure: PN 16
Temperature range: -10 to +150 °C



Technical Specifications

Product Name - Code	3/8" General Purpose High Pressure Normally Open Solenoid Valf - GEM1112YBA
Size	3/8"
Usages Areas	Water, Air, Neutral Gases, Liquids, Oil, Vapors Up To Maximum 180 °C
Connection Tooth Feature	BSP, Optionally NPT
Nominal Pressure	16 Bar
Working Pressure Range	0.5-40 Bar
Coil Specification	IP 65, Class H, ED %100
Fluid Operating Temperature Range	-10/+150 °C
Environment Operating Temperature Range	-10/+60 °C
Valve Lock Status	Normally Open
Material Range	0,310 kg
Flow Direction Feature	One Way
Diaphragm and Seal Feature	(NBR:-10°C /+80°C) , (EPDM:-10°C/+130°C) , (VITON:-10°C/+160°C) ,(PTFE:-10°C/+180°C)
Response Time	Open Time: 300 ms Closed Time: 900ms
KVs(lt/dk)	1,8

No	Track Name	Material Name
1	Valf Body	MS 58
2	Body Cover	MS 58
3	Coil Cover	Powered Fiber Glass
4	Diyaphragm	NBR, EPDM, SKM, PTFE, RUBY
5	Hive	AISI316 Stainless Steel
6	Core	430F Stainless Steel
7	Bypass Gasket	NBR, EPDM, VITON, PTFE, RUBY
8	Orifis Gasket	NBR, EPDM, VITON, PTFE, RUBY

1/2" GENERAL PURPOSE HIGH PRESSURE NORMALLY OPEN SOLENOID VALF

GEM 1113YBA



GEM 1113YBA

Product Description

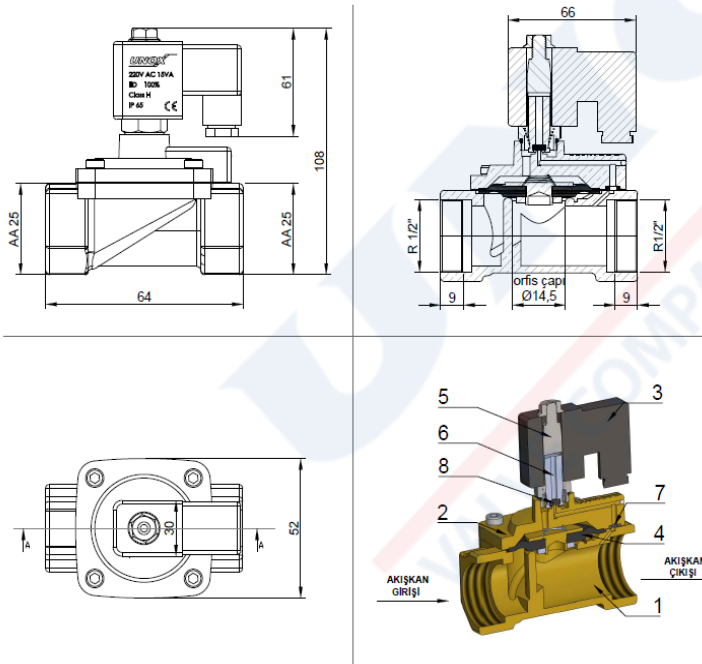
Normally Opened Solenoid Valve does not allow fluid to pass through initially. With the electric current coming to the coil to open the valve, the coil moves and pulls the core upwards and the mouth of the iris hole opens, so that the fluid under high pressure quickly moves to the outlet from the bypass hole, with this progress, the pressure inside drops very quickly and the pressure difference occurs inside. Due to this difference, the diaphragm lifts upwards by overcoming the spring force and the fluid is allowed to pass, thus the valve becomes open. All this happens in a very short time. Our products designed to get the best efficiency.

Suggestions

Mount the solenoid valve with the coil above. In the installation, such as strainer before the solenoid valve, etc. For high temperatures, we use more durable diaphragm and gasket material.

Usage

Valve Lock: Normally Open
Nominal Size: 1/2"
Nominal Pressure: PN 16
Temperature range: -10 to +150 °C



Technical Specifications

Product Name - Code	1/2" General Purpose High Pressure Normally Open Solenoid Valf - GEM1113YBA
Size	1/2"
Usages Areas	Water, Air, Neutral Gases, Liquids, Oil, Vapors Up To Maximum 180 °C
Connection Tooth Feature	BSP, Optionally NPT
Nominal Pressure	16 Bar
Working Pressure Range	0.5-40 Bar
Coil Specification	IP 65, Class H, ED %100
Fluid Operating Temperature Range	-10/+150 °C
Environment Operating Temperature Range	-10/+60 °C
Valve Lock Status	Normally Open
Material Range	0,585 kg
Flow Direction Feature	One Way
Diaphragm and Seal Feature	(NBR:-10°C /+80°C) , (EPDM:-10°C/+130°C) , (VİTON:-10°C/+160°C) ,(PTFE:-10°C/+180°C)
Response Time	Open Time: 300 ms Closed Time: 900ms
KVs(lt/dk)	75

No	Track Name	Material Name
1	Valf Body	MS 58
2	Body Cover	MS 58
3	Coil Cover	Powered Fiber Glass
4	Diyaphragm	NBR, EPDM, SKM, PTFE, RUBY
5	Hive	AISI316 Stainless Steel
6	Core	430F Stainless Steel
7	Bypass Gasket	NBR, EPDM, VİTON, PTFE, RUBY
8	Orifis Gasket	NBR, EPDM, VİTON, PTFE, RUBY

3/4" GENERAL PURPOSE HIGH PRESSURE NORMALLY OPEN SOLENOID VALF

GEM 1114YBA



GEM 1114YBA

Product Description

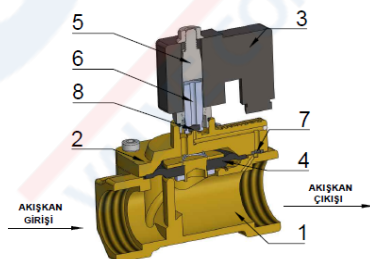
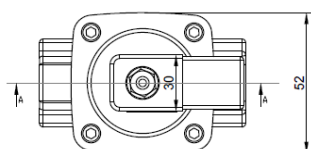
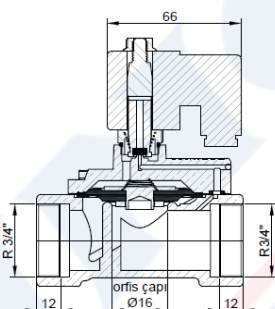
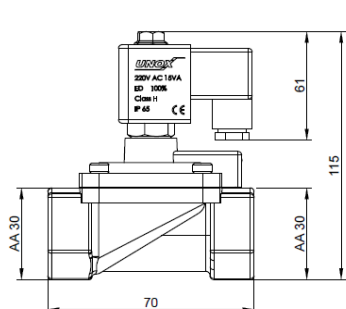
Normally Opened Solenoid Valve does not allow fluid to pass through initially. With the electric current coming to the coil to open the valve, the coil moves and pulls the core upwards and the mouth of the iris hole opens, so that the fluid under high pressure quickly moves to the outlet from the bypass hole, with this progress, the pressure inside drops very quickly and the pressure difference occurs inside. Due to this difference, the diaphragm lifts upwards by overcoming the spring force and the fluid is allowed to pass, thus the valve becomes open. All this happens in a very short time. Our products are designed to get the best efficiency.

Suggestions

Mount the solenoid valve with the coil above. In the installation, such as strainer before the solenoid valve, etc. For high temperatures, we use more durable diaphragm and gasket material.

Usage

Valve Lock: Normally Open
 Nominal Size: 3/4"
 Nominal Pressure: PN 16
 Temperature range: -10 to +150 °C



Technical Specifications

Product Name - Code	3/4" General Purpose High Pressure Normally Open Solenoid Valf - GEM1114YBA
Size	3/4"
Usages Areas	Water, Air, Neutral Gases, Liquids, Oil, Vapors Up To Maximum 180 °C
Connection Tooth Feature	BSP, Optionally NPT
Nominal Pressure	16 Bar
Working Pressure Range	0.5-40 bar
Coil Specification	IP 65, Class H, ED %100
Fluid Operating Temperature Range	-10/+150 °C
Environment Operating Temperature Range	-10/+60 °C
Valve Lock Status	Normally Open
Material Range	0,625 kg
Flow Direction Feature	One Way
Diaphragm and Seal Feature	(NBR:-10°C /+80°C) , (EPDM:-10°C/+130°C) , (VİTON:-10°C/+160°C) ,(PTFE:-10°C/+180°C)
Response Time	Open Time: 300 ms Closed Time: 900ms
KVs(lt/dk)	85

No	Track Name	Material Name
1	Valf Body	MS 58
2	Body Cover	MS 58
3	Coil Cover	Powered Fiber Glass
4	Diaphragm	NBR, EPDM, SKM, PTFE, RUBY
5	Hive	AISI316 Stainless Steel
6	Core	430F Stainless Steel
7	Bypass Gasket	NBR, EPDM, VİTON, PTFE, RUBY
8	Orifis Gasket	NBR, EPDM, VİTON, PTFE, RUBY

1" GENERAL PURPOSE HIGH PRESSURE NORMALLY OPEN SOLENOID VALF

GEM 1115YBA



GEM 1115YBA

Product Description

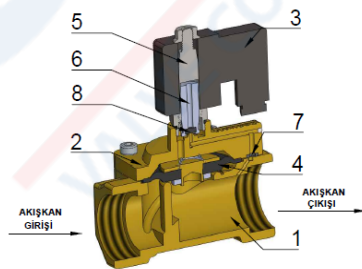
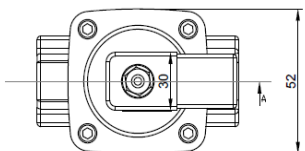
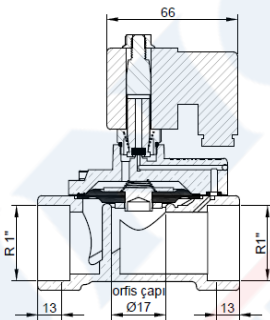
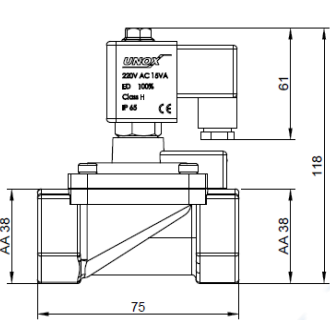
Normally Opened Solenoid Valve does not allow fluid to pass through initially. With the electric current coming to the coil to open the valve, the coil moves and pulls the core upwards and the mouth of the orifice hole opens, so that the fluid under high pressure quickly moves to the outlet from the bypass hole, with this progress, the pressure inside drops very quickly and the pressure difference occurs inside. Due to this difference, the diaphragm lifts upwards by overcoming the spring force and the fluid is allowed to pass, thus the valve becomes open. All this happens in a very short time. Our products designed to get the best efficiency.

Suggestions

Mount the solenoid valve with the coil above. In the installation, such as strainer before the solenoid valve, etc. For high temperatures, we use more durable diaphragm and gasket material.

Usage

Valve Lock: Normally Open
Nominal Size: 1"
Nominal Pressure: PN 16
Temperature range: -10 to +150 °C



Technical Specifications

Product Name - Code	1" General Purpose High Pressure Normally Open Solenoid Valve - GEM1115YBA
Size	1"
Usages Areas	Water, Air, Neutral Gases, Liquids, Oil, Vapors Up To Maximum 180 °C
Connection Tooth Feature	BSP, Optionally NPT
Nominal Pressure	16 Bar
Working Pressure Range	0.5-40 bar
Coil Specification	IP 65, Class H, ED %100
Fluid Operating Temperature Range	-10/+150 °C
Environment Operating Temperature Range	-10/+60 °C
Valve Lock Status	Normally Open
Material Range	0,700 kg
Flow Direction Feature	One Way
Diaphragm and Seal Feature	(NBR:-10°C /+80°C) , (EPDM:-10°C/+130°C) , (VITON:-10°C/+160°C) ,(PTFE:-10°C/+180°C)
Response Time	Open Time: 300 ms Closed Time: 900ms
KVs(lt/dk)	95

No	Track Name	Material Name
1	Valf Body	MS 58
2	Body Cover	MS 58
3	Coil Cover	Powered Fiber Glass
4	Diaphragm	NBR, EPDM, SKM, PTFE, RUBY
5	Core	AISI316 Stainless Steel
6	Core	430F Stainless Steel
7	Bypass Gasket	NBR, EPDM, VITON, PTFE, RUBY
8	Orifice Gasket	NBR, EPDM, VITON, PTFE, RUBY