



PRICE LIST 2024

*BUTTERFLY VALVES
PNEUMATIC ACTUATORS
ELECTRIC ACTUATORS
ACTUATED VALVES
STEAM TRAPS
PNEUMATIC CONTROL VALVES
ELECTRIC CONTROL VALVES
SOLENOID VALVES
STAINLESS STEEL PRODUCTS
FANTINI COSMI PRODUCTS*



7 CONTINENT
50 IN MORE THAN 50 COUNTRIES
YOUR SOLUTION PARTNER

2024
PRICE LIST



UNOX started its activities in Imes Industrial Zone in 1992 and continues to offer customer-oriented, quality and correct product service together. Since the first day we started manufacturing, we have gained serious experience in many products, especially solenoid valves and actuators, with our devoted work, and we are working to provide the best service to our customers by adding steam trap and control valves to our production capabilities. We continue to be a reliable solution partner for our customers in many parts of the world, with complementary product groups in changing and developing market conditions, for industrial installation users.

UNOX is also the representative in Turkey of Fantini Cosmi, an Italian company that has developed expertise in many fields from pressure control to flow and level temperature control, from civil automation to air conditioning, ventilation and even air treatment.

Our company with high production capacity; With its expert technical and administrative staff, it strives to add value to its country with all its might and offers its customers sustainable, long-lasting products that require low maintenance costs.



32
YEARS
OF
EXPERIENCE



50+
WORKER



50+
COUNTRY





APPLICATIONS WE PRODUCE SOLUTIONS

OIL	AIR	GAS	WATER	STEAM	FUEL	PETROLEUM	ON-OFF
OIL WATER	PROPORTIONAL	VACUUM	CNG	HOT WATER	ZERO DIFFERENTIAL PRESSURE	LOW PRESSURE	HIGH PRESSURE
HOT OIL	-50 °C WORKING	AGGRESSIVE CHEMICALS	NORMALLY OPEN	NORMALLY CLOSED	OILY AIR	COMBUSTIBLE	ENERGY-SAVING
HIGH TEMPERATURE	CHEMICAL WARFARE						

SECTORS WE SERVE

FOOD	IRON AND STEEL	ENERGY	CHEMICAL	HEALTH	TEXTILE	PLASTIC
COMPRESSOR	HEALTH	SMART HOUSE	PURIFICATION	PAINT INDUSTRY	PETRO CHEMISTRY	PETROLEUM AND GAS
CEMENT AND CONCRETE LIME	HEATING COOLING	FILLING SYSTEMS	NATURAL GAS AND LPG	MACHINERY MANUFACTURERS	FILTER AND DUST COLLECTION	IRRIGATION SYSTEMS



12

BUTTERFLY VALVES

EPDM GASKET BUTTERFLY VALVE	12-13
TEFLON GASKET BUTTERFLY VALVE	14-15
VITON GASKET BUTTERFLY VALVE	16-17
NBR GASKET BUTTERFLY VALVE	18-21
AL-BR BUTTERFLY VALVE	20-21
KNIFE GATE VALVE	22-23
GATE VALVE	24
DISMANTLING AND MANUEL CONTROL BUTTERFLY VALVE	25
GLOBE VALVES	26
CHECK VALVE / STRAINER	27
CAST IRON BALL VALVE	28-29

30

PNEUMATIC AND ELECTRIC ACTUATORS

PNEUMATIC ACTUATORS	31-32
EXPROOF PNEUMATIC ACTUATORS	33
ELECTRIC ACTUATORS	34-36



37

ACTUATED VALVES

U-PVC VALVES WITH PNEUMATIC ACTUATOR	38-40
U-PVC VALVES WITH ELECTRIC ACTUATOR	41-43
VALVES WITH PNEUMATIC ACTUATOR	44-45
VALVES WITH ELECTRIC ACTUATOR	46-49
STAINLESS STEEL BUTTERFLY VALVE	50
PNEUMATIC ACTUATOR ACCESSORIES	51
VALVE-ACTUATOR CONNECTION PARTS	52

53

STEAM TRAPS

STEAM TRAPS	54-58
SAFETY VALVES	59
STEAM TRAP SPARE PART AND ACCESSORIES	60
LEVEL AND FLOW	61-64
FLASH STEAM GAINING SYSTEMS	65-66
PID CONTROL SYSTEMS	67-68
SINGLE ACTING PNEUMATIC PISTON VALVES	69





88

SOLENOID VALVES

GENERAL PURPOSE SOLENOID VALVES	89-90
STEAM SOLENOID VALVES	91
COMPRESSOR SOLENOID VALVES	92
PISTON TYPE SOLENOID VALVES	93
WEDGE BODY SOLENOID VALVES	94-95
FULL BORE GENERAL PURPOSE SOLENOID VALVES	96
STAINLESS STEEL GENERAL PURPOSE SOLENOID VALVES	97
STAINLESS STEEL STEAM SOLENOID VALVES	98
STAINLESS STEEL COMPRESSOR SOLENOID VALVES	99
SOLENOID FUEL VALVES	100
VACUUM SOLENOID VALVES	101
SOLENOID VALVES SPARE PART AND ACCESSORIES	102-103
HYDRAULIC CONTROL VALVES	104-106
FIRE GROUP CONTROL VALVES	107



70

CONTROL VALVES

PNEUMATIC CONTROL VALVES	71-79
MOTORIZED CONTROL VALVES	80-87



108

STAINLESS STEEL GROUP

STAINLESS STEEL FLANGES	109
BALL VALVES	110-112
CHECK VALVE / STRAINER	113-114
FLEXIBLE METAL HOSES	115
EXPANSION JOINTS	116-124

125

FANTINI COSMI

FANTINI COSMI VACUUM PRESSURE SWITCH	126
FANTINI COSMI PRESSURE SWITCH	126
FANTINI COSMI LEVEL CONTROL AND PANELS	127-128
FANTINI COSMI HUMIDSTATS LEVEL CONTROLLER	129



BUTTERFLY VALVE



EPDM GASKET IRON DISC WAFER TYPE BUTTERFLY VALVE



SIZE	MODEL		PRICE €
	UKLB-07		
DN40	070040		66
DN50	070050		68
DN65	070065		77
DN80	070080		85
DN100	070100		118
DN125	070125		146
DN150	070150		170
DN200	070200		287
DN250	070250		445
DN300	070300		569

Body : GGG-40 Cast Iron
 Disc : GGG40.3 Nickel Plated Cost Iron
 Shaft : AISI420 Stainless Steel
 Gasket : EPDM
 Max. Working Temp. : 120 °C
 Working Pressure : PN16 (DN25-300)
 Paint : Electro Static Powder Point
 Connection : Wafer Type ISO 7005-1 EN 1092-1



BUTTERFLY VALVE

EPDM GASKET IRON DISC LUG TYPE BUTTERFLY VALVE



SIZE	MODEL		PRICE €
	UKLB-08		
DN40	080040		80
DN50	080050		84
DN65	080065		90
DN80	080080		111
DN100	080100		159
DN125	080125		197
DN150	080150		235
DN200	080200		424
DN250	080250		624
DN300	080300		803

Body : GGG-40 Cast Iron
 Disc : GGG40.3 Nickel Plated Cost Iron
 Shaft : AISI420 Stainless Steel
 Gasket : EPDM
 Max. Working Temp. : 120 °C
 Working Pressure : PN16 (DN25-300)
 Paint : Electro Static Powder Point
 Connection : Lug Type ISO 7005-1 EN 1092-1

EPDM GASKET STAINLESS STEEL DISC WAFER TYPE BUTTERFLY VALVE



SIZE	MODEL		PRICE €	
	UKLB-05	AISI304	AISI316	
DN40	050040	77	85	
DN50	050050	78	87	
DN65	050065	90	101	
DN80	050080	101	115	
DN100	050100	152	173	
DN125	050125	190	214	
DN150	050150	242	287	
DN200	050200	414	483	
DN250	050250	724	879	
DN300	050300	1016	1240	

Body : GGG-40 Cast Iron
 Disc : AISI304 Stainless Steel
 Shaft : AISI420 Stainless Steel
 Gasket : EPDM
 Max. Working Temp. : 120 °C
 Working Pressure : PN16 (DN25-300)
 Paint : Electro Static Powder Paint
 Connection : Wafer Type ISO 7005-1 EN 1092-1

EPDM GASKET STAINLESS STEEL DISC LUG TYPE BUTTERFLY VALVE



SIZE	MODEL		PRICE €	
	UKLB-06	AISI304	AISI316	
DN40	060040	87	97	
DN50	060050	90	101	
DN65	060065	108	121	
DN80	060080	128	152	
DN100	060100	190	221	
DN125	060125	256	290	
DN150	060150	318	369	
DN200	060200	572	672	
DN250	060250	892	1020	
DN300	060300	1275	1464	

Body : GGG-40 Cast Iron
 Disc : AISI304 Stainless Steel
 Shaft : AISI420 Stainless Steel
 Gasket : EPDM
 Max. Working Temp. : 120 °C
 Working Pressure : PN16 (DN25-300)
 Paint : Electro Static Powder Paint
 Connection : Lug Type ISO 7005-1 EN 1092-1

BUTTERFLY VALVE



TEFLON GASKET AISI304 DISC WAFER TYPE BUTTERFLY VALVE



SIZE	MODEL	
	UKLB-11	PRICE €
DN40	110040	157
DN50	110050	166
DN65	110065	183
DN80	110080	227
DN100	110100	331
DN125	110125	406
DN150	110150	511
DN200	110200	812
DN250	110250	1246
DN300	110300	2086



Gasket : PTFE
 Disc : 304 Stainless Steel
 Shaft : AISI 420
 Working Temperature: -20°C / +180°C
 Working Pressure : 0-16 Bar

TEFLON GASKET AISI316 DISC WAFER TYPE BUTTERFLY VALVE



SIZE	MODEL	
	UKLB-12	PRICE €
DN40	120040	166
DN50	120050	182
DN65	120065	200
DN80	120080	248
DN100	120100	362
DN125	120125	447
DN150	120150	573
DN200	120200	664
DN250	120250	1447
DN300	120300	2410



Gasket : PTFE
 Disc : 316 Stainless Steel
 Shaft : AISI 420
 Working Temperature: -20°C / +180°C
 Working Pressure : 0-16 Bar



BUTTERFLY VALVE

TEFLON GASKET AISI304 DISC LUG TYPE BUTTERFLY VALVE



SIZE	MODEL	
	UKLB-09	PRICE €
DN40	090040	166
DN50	090050	175
DN65	090065	198
DN80	090080	253
DN100	090100	366
DN125	090125	464
DN150	090150	580
DN200	090200	957
DN250	090250	1391
DN300	090300	2318



Gasket : PTFE
 Disc : 304 Stainless Steel
 Shaft : AISI 420
 Working Temperature: -20°C / +180°C
 Working Pressure : 0-16 Bar

TEFLON GASKET AISI316 DISC LUG TYPE BUTTERFLY VALVE



SIZE	MODEL	
	UKLB-10	PRICE €
DN40	100040	178
DN50	100050	194
DN65	100065	218
DN80	100080	284
DN100	100100	411
DN125	100125	519
DN150	100150	652
DN200	100200	1085
DN250	100250	1567
DN300	100300	2591



Gasket : PTFE
 Disc : 316 Stainless Steel
 Shaft : AISI 420
 Working Temperature: -20°C / +180°C
 Working Pressure : 0-16 Bar

BUTTERFLY VALVE



VITON GASKET AISI304 DISC WAFER TYPE BUTTERFLY VALVE



SIZE	MODEL	
	UKLB-15	PRICE €
DN40	150040	221
DN50	150050	245
DN65	150065	269
DN80	150080	296
DN100	150100	477
DN125	150125	573
DN150	150150	712
DN200	150200	995
DN250	150250	1898
DN300	150300	2651



Gasket : Viton
 Disc : 304 Stainless Steel
 Shaft : AISI 420
 Working Temperature: 150°C
 Working Pressure : 0-16 Bar



BUTTERFLY VALVE

VITON GASKET AISI304 DISC LUG TYPE BUTTERFLY VALVE



SIZE	MODEL	
	UKLB-17	PRICE €
DN40	170040	230
DN50	170050	254
DN65	170065	284
DN80	170080	324
DN100	170100	513
DN125	170125	633
DN150	170150	784
DN200	170200	1145
DN250	170250	2049
DN300	170300	2892



Gasket : Viton
 Disc : 304 Stainless Steel
 Shaft : AISI 420
 Working Temperature: 150°C
 Working Pressure : 0-16 Bar

VITON GASKET AISI316 DISC WAFER TYPE BUTTERFLY VALVE



SIZE	MODEL	
	UKLB-16	PRICE €
DN40	160040	230
DN50	160050	244
DN65	160065	267
DN80	160080	296
DN100	160100	476
DN125	160125	574
DN150	160150	725
DN200	160200	1020
DN250	160250	1970
DN300	160300	2781



Gasket : Viton
 Disc : 316 Stainless Steel
 Shaft : AISI 420
 Working Temperature: 150°C
 Working Pressure : 0-16 Bar

VITON GASKET AISI316 DISC LUG TYPE BUTTERFLY VALVE



SIZE	MODEL	
	UKLB-18	PRICE €
DN40	180040	242
DN50	180050	266
DN65	180065	296
DN80	180080	344
DN100	180100	543
DN125	180125	670
DN150	180150	832
DN200	180200	1236
DN250	180250	2169
DN300	180300	3073



Gasket : Viton
 Disc : 316 Stainless Steel
 Shaft : AISI 420
 Working Temperature: 150°C
 Working Pressure : 0-16 Bar

BUTTERFLY VALVE



NBR GASKET IRON DISC WAFER TYPE BUTTERFLY VALVE



SIZE	MODEL	
	UKLB-19	PRICE €
DN40	190040	76
DN50	190050	81
DN65	190065	91
DN80	190080	105
DN100	190100	148
DN125	190125	183
DN150	190150	221
DN200	190200	344
DN250	190250	555
DN300	190300	706



Gasket : NBR
 Disc : Iron Disc
 Shaft : AISI 420
 Working Temperature: -10°C / +80°C
 Working Pressure : 0-16 Bar



BUTTERFLY VALVE

NBR GASKET IRON DISC LUG TYPE BUTTERFLY VALVE



SIZE	MODEL	
	UKLB-20	PRICE €
DN40	200040	87
DN50	200050	93
DN65	200065	106
DN80	200080	129
DN100	200100	184
DN125	200125	231
DN150	200150	282
DN200	200200	477
DN250	200250	724
DN300	200300	923



Gasket : NBR
 Disc : Iron Disc
 Shaft : AISI 420
 Working Temperature: -10°C / +80°C
 Working Pressure : 0-16 Bar

NBR GASKET AISI304 DISC WAFER TYPE BUTTERFLY VALVE



SIZE	MODEL	
	UKLB-21	PRICE €
DN40	210040	84
DN50	210050	92
DN65	210065	106
DN80	210080	120
DN100	210100	178
DN125	210125	225
DN150	210150	288
DN200	210200	465
DN250	210250	791
DN300	210300	1127



Gasket : NBR
 Disc : 304 Stainless Steel
 Shaft : AISI 420
 Working Temperature: 180°C
 Working Pressure : 0-16 Bar

NBR GASKET AISI304 DISC LUG TYPE BUTTERFLY VALVE



SIZE	MODEL	
	UKLB-23	PRICE €
DN40	230040	94
DN50	230050	113
DN65	230065	121
DN80	230080	148
DN100	230100	214
DN125	230125	285
DN150	230150	360
DN200	230200	615
DN250	230250	977
DN300	230300	1368



Gasket : NBR
 Disc : 304 Stainless Steel
 Shaft : AISI 420
 Working Temperature: 80°C
 Working Pressure : 0-16 Bar

BUTTERFLY VALVE



NBR GASKET AISI316 DISC WAFER TYPE BUTTERFLY VALVE



SIZE	MODEL	
	UKLB-22	PRICE €
DN40	220040	93
DN50	220050	97
DN65	220065	111
DN80	220080	127
DN100	220100	189
DN125	220125	240
DN150	220150	317
DN200	220200	511
DN250	220250	928
DN300	220300	1316



Gasket : NBR
 Disc : 316 Stainless Steel
 Shaft : AISI 420
 Working Temperature: 80°C
 Working Pressure : 0-16 Bar



BUTTERFLY VALVE

NBR GASKET AISI316 DISC LUG TYPE BUTTERFLY VALVE



SIZE	MODEL	
	UKLB-24	PRICE €
DN40	240040	105
DN50	240050	113
DN65	240065	134
DN80	240080	168
DN100	240100	244
DN125	240125	321
DN150	240150	408
DN200	240200	706
DN250	240250	1097
DN300	240300	1549



Gasket : NBR
 Disc : 316 Stainless Steel
 Shaft : AISI 420
 Working Temperature: 80°C
 Working Pressure : 0-16 Bar

EPDM GASKET ALUMINUM BRONZE DISC WAFER TYPE BUTTERFLY VALVE



SIZE	MODEL	
	UKLB-25	PRICE €
DN40	250040	100
DN50	250050	103
DN65	250065	121
DN80	250080	146
DN100	250100	230
DN125	2501205	302
DN150	250150	405
DN200	250200	688
DN250	250250	1206
DN300	250300	1929



Gasket : EPDM
 Disc : Aluminum Bronze
 Shaft : AISI 420
 Working Temperature: 110 °C
 Working Pressure : 0-16 Bar

EPDM GASKET ALUMINUM BRONZE DISC LUG TYPE BUTTERFLY VALVE



SIZE	MODEL	
	UKLB-26	PRICE €
DN40	260040	134
DN50	260050	140
DN65	260065	170
DN80	260080	218
DN100	260100	320
DN125	260125	417
DN150	260150	555
DN200	260200	1007
DN250	250250	1688
DN300	250300	2531



Gasket : EPDM
 Disc : Aluminum Bronze
 Shaft : AISI 420
 Working Temperature: 110 °C
 Working Pressure : 0-16 Bar

KNIFE GATE VALVE



KNIFE GATE VALVE

MANUAL KNIFE GATE VALVE



SIZE	MODEL	UNI-DIRECTIONAL	BI-DIRECTIONAL
		SEALING	SEALING
		PRICE €	PRICE €
DN50	BVM0050	198	264
DN65	BVM0065	232	297
DN80	BVM0080	276	342
DN100	BVM0100	330	392
DN125	BVM0125	454	524
DN150	BVM0150	498	578
DN200	BVM0200	680	754
DN250	BVM0250	988	1103
DN300	BVM0300	1338	1511
DN350	BVM0350	2531	2963
DN400	BVM0400	2799	3210
DN500	BVM0500	6604	7242



Body : GGG-40
 Knife : AISI304 / AISI316
 Seat Ring : EPDM, NBR, Viton, Teflon
 Working Temperature : -10°C / +110°C
 Working Pressure : 0-16 Bar
 Pressure Class : PN16
 Optional : Ask for stainless steel (304 - 316) body.

PNEUMATIC OPERATED KNIFE GATE VALVE



SIZE	MODEL	UNI-DIRECTIONAL	BI-DIRECTIONAL
		SEALING	SEALING
		PRICE €	PRICE €
DN50	BVP0050	412	495
DN65	BVP0065	454	524
DN80	BVP0080	495	569
DN100	BVP0100	544	618
DN125	BVP0125	762	844
DN150	BVP0150	791	886
DN200	BVP0200	1071	1194
DN250	BVP0250	1606	1762
DN300	BVP0300	2140	2387
DN350	BVP0350	4115	4466
DN400	BVP0400	4527	5042
DN500	BVP0500	9362	10082



Pneumatic Piston : Double Acting / Magnetic
 Body : GGG-40
 Knife : AISI304 / AISI316
 Seat Ring : EPDM, NBR, Viton, Teflon
 Working Temperature : -10°C / +110°C
 Working Pressure : 0-16 Bar
 Pressure Class : PN16
 Optional : Ask for stainless steel (304 - 316) body.
 Ask for Switch and Directional Valve.

GATE VALVES

METAL SEAT GATE VALVE

SIZE (DN)	MODEL	PRICE €
40	USV-M0040	196
50	USV-M0050	206
65	USV-M0065	258
80	USV-M0080	309
100	USV-M0100	374
125	USV-M0125	559
150	USV-M0150	762
200	USV-M0200	1235



Body	: EN-GJS-400-500 (GGG40-50)
Cover	: EN-GJS-400-500 (GGG40-50)
Shaft	: X20Cr13
Cover Gasket	: EPDM
Bearing	: MS58
Cover Bolt	: 8.8 GALVANIZED
Connection	: EN 1092-2



RESILIENT SEAT GATE VALVE

SIZE (DN)	MODEL	PRICE €
40	USV-E0040	138
50	USV-E0050	148
65	USV-E0065	196
80	USV-E0080	234
100	USV-E0100	282
125	USV-E0125	422
150	USV-E0150	532
200	USV-E0200	899



Body	: EN-GJS-400-500 (GGG40-50)
Cover	: EN-GJS-400-500 (GGG40-50)
Shaft	: X20Cr13
Cover Gasket	: EPDM
Cover Bolt	: 8.8 İMBUS
Bearing	: MS58
Connection	: EN 1092-2



DISMANTLING/BUTTERFLY VALVE

DISMANTLING JOINT

SIZE (DN)	MODEL	PRICE €
40	UDP-0040	165
50	UDP-0050	172
65	UDP-0065	196
80	UDP-0080	227
100	UDP-0100	302
125	UDP-0125	395
150	UDP-0150	467
200	UDP-0200	662



Long Piece	: Sfero Cast EN-GJS-400-15
Short Piece	: Sfero Cast EN-GJS-400-15
Thrust Flange	: Steel S235JR
Sealing Ring	: EPDM
Nut	: Steel - Galvanized
Thrust	: Steel - Galvanized



DOUBLE FLANGED BUTTERFLY VALVE

SIZE (DN)	MODEL	PRICE €
100	UKLB-280100	1276
125	UKLB-280125	1355
150	UKLB-280150	1441
200	UKLB-280200	1698
250	UKLB-280250	2212
300	UKLB-280300	2641
350	UKLB-280350	3652
400	UKLB-280400	4135
450	UKLB-280450	6515
500	UKLB-280500	7543
600	UKLB-280600	9919



Body	: Sfero Cast EN-GJS-400-15
Disc	: Sfero Cast EN-GJS-400-15
Sealing Ring	: EPDM
Bearing	: Bronze
O-ring	: EPDM
Shaft Cover	: Sfero Cast EN-GJS-400-15



GLOBE VALVES

STRAIGHT GLOBE VALVE

SIZE (DN)	MODEL	CAST IRON PRICE €	DUCTILO IRON PRICE €
15	1530100	122	140
20	1530101	132	153
25	1530102	160	180
32	1530103	186	214
40	1530104	236	269
50	1530105	275	320
65	1530106	391	468
80	1530107	488	580
100	1530108	829	1001
125	1530109	1157	1332
150	1530110	1525	1843
200	1530111	2796	3559



METAL SEAT GLOBE VALVE

SIZE (DN)	MODEL	CAST IRON PRICE €	DUCTILO IRON PRICE €
15	1530066	178	196
20	1530067	186	211
25	1530068	216	241
32	1530069	254	282
40	1530070	292	336
50	1530071	343	412
65	1530072	539	676
80	1530073	656	826
100	1530074	976	1195
125	1530075	1423	1779
150	1530076	1917	2369
200	1530077	3642	4550



CHECK VALVE / STRAINER

SWING CHECK VALVE

SIZE (DN)	MODEL	PRICE €
40	2360040	97
50	2360050	107
65	2360065	138
80	2360080	186
100	2360100	230
125	2360125	337
150	2360150	460
200	2360200	779

Body : EN-GJS-400-500 (GGG40-50)
 Cover : EN-GJS-400-500 (GGG40-50)
 Disc : EPDM Coated

Bearing : MS58
 Cover Gasket : EPDM
 Cover Bolt : 8.8 GALVANIZED



FLANGED LIFT CHECK VALVE

SIZE (DN)	MODEL	PRICE €
15	0015	69
20	0020	97
25	0025	103
32	0032	134
40	0040	169
50	0050	213
65	0065	330
80	0080	405
100	0100	522



FLANGED STRAINER

SIZE (DN)	MODEL	CAST IRON PRICE €	DUCTILO IRON PRICE €
15	2470015	42	42
20	2470020	52	52
25	2470025	59	59
32	2470032	66	83
40	2470040	79	93
50	2470050	90	110
65	2470065	127	158
80	2470080	158	193
100	2470100	196	247
125	2470125	302	364
150	2470150	470	566
200	2470200	875	1852



Type : VPT
 Body : Sfero Cast
 Pressure Class : PN16, PN25
 Temperature : -20°C, +350°C

CAST IRON BALL VALVE



3 PIECES CAST IRON BALL VALVE THREADED

SIZE	MODEL	PRICE €
1/2"	4000015	59
3/4"	4000020	64
1"	4000025	86
1 1/4"	4000032	117
1 1/2"	4000040	162
2"	4000050	189
2 1/2"	4000065	275
3"	4000080	391
4"	4000100	679



Body : GG25
 Gasket : PTFE - Teflon
 Pressure Class : PN16
 Nut : 5.6
 Connection : Threaded

2 PIECES CAST IRON BALL VALVE FLANGED

SIZE (DN)	MODEL	PRICE €
15	4040015	68
20	4040020	71
25	4040025	73
32	4040032	74
40	4040040	90
50	4040050	105
65	4040065	139
80	4040080	166
100	4040100	199
125	4040125	282
150	4040150	390
200	4040200	841



Body : GG25
 Gasket : PTFE - Teflon
 Pressure Class : PN16
 Nut : 5.6
 Connection : Flanged

2 PIECES CAST IRON BALL VALVE FLANGED - MOUNTING PAD

SIZE (DN)	MODEL	PRICE €
15	4030015	93
20	4030020	121
25	4030025	131
32	4030032	172
40	4030040	189
50	4030050	206
65	4030065	275
80	4030080	361
100	4030100	515
125	4030125	926
150	4030150	1509
200	4030200	2538



Body : GG25
 Gasket : PTFE - Teflon
 Pressure Class : PN16
 Nut : 5.6
 Connection : Flanged

CAST IRON BALL VALVE



3 PIECES CAST IRON BALL VALVE FLANGED - MOUNTING PAD

SIZE (DN)	MODEL	PRICE €
15	4010015	86
20	4010020	110
25	4010025	124
32	4010032	165
40	4010040	189
50	4010050	241
65	4010065	316
80	4010080	429
100	4010100	635
125	4010125	995
150	4010150	1681
200	4010200	2743

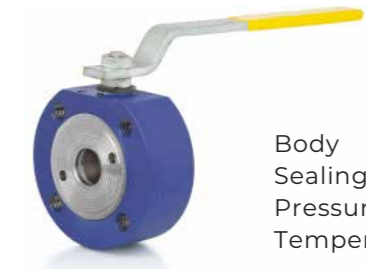


Body : GG25
 Gasket : PTFE - Teflon
 Pressure Class : PN16
 Nut : 5.6
 Connection : Flanged

MONOBLOCK BALL VALVE



Body : AISI304 / AISI316
 Sealing : PTFE
 Pressure Class : PN16
 Temperature : -30°C / +220°C



Body : AISI304 / AISI316
 Sealing : PTFE
 Pressure Class : PN16
 Temperature : -30°C / +220°C

AISI 304			AISI 316			CARBON STEEL		
SIZE	MODEL	PRICE €	SIZE	MODEL	PRICE €	SIZE	MODEL	PRICE €
DN15	4020015		DN15	4021015		DN15	4022015	107
DN20	4020020		DN20	4021020		DN20	4022020	117
DN25	4020025		DN25	4021025		DN25	4022025	131
DN32	4020032		DN32	4021032		DN32	4022032	196
DN40	4020040	ASK FOR PRICE	DN40	4021040	ASK FOR PRICE	DN40	4022040	237
DN50	4020050	ASK FOR PRICE	DN50	4021050	ASK FOR PRICE	DN50	4022050	292
DN65	4020065	ASK FOR PRICE	DN65	4021065	ASK FOR PRICE	DN65	4022065	419
DN80	4020080		DN80	4021080		DN80	4022080	594
DN100	4020100		DN100	4021100		DN100	4022100	1029
DN125	4020125		DN125	4021125		DN125	4022125	1903
DN150	4020150		DN150	4021150		DN150	4022150	3995
DN200	4020200		DN200	4021200		DN200	4022200	6549



PNEUMATIC AND ELECTRIC ACTUATORS



PNEUMATIC ACTUATORS

DOUBLE ACTING PNEUMATIC ACTUATOR



MODEL	TORK(NM) 6 Bar Air	PRICE €
UDA 040	12	71
UDA 052	25	98
UDA 063	45	120
UDA 075	74	136
UDA 083	98	147
UDA 092	140	185
UDA 105	207	293
UDA 125	308	368
UDA 140	514	487
UDA 160	800	649
UDA 190	1361	1243
UDA 210	1870	1945
UDA 240	2931	3673
UDA 270	4122	6481



Body : Aluminum Extrusion
 Pistons : Aluminum Casting
 Shaft : Cadmium Layer Steel
 O-ring : Nitrile Rubber

SINGLE ACTING PNEUMATIC ACTUATOR



MODEL	TORK(NM) 6 Bar Air	PRICE €
USA 052	15,5	145
USA 063	27	171
USA 075	37	214
USA 083	56	239
USA 092	82	299
USA 105	123	429
USA 125	180	700
USA 140	308	861
USA 160	470	1011
USA 190	658	1513
USA 210	836	2485



Body : Aluminum Extrusion
 Pistons : Aluminum Casting
 Mil : Cadmium Layer Steel
 O-ring : Nitrile Rubber

PNEUMATIC ACTUATORS

COLD ENVIRONMENT(-50°C) PNEUMATIC ACTUATORS



MODEL	STANDARD FLANGE	TORK(NM) 6 Bar Air	PRICE €
UDA 040	F03	12	105
UDA 052	F03/F04	25	118
UDA 063	F04/F05/F07	45	155
UDA 075	F04/F05/F07	74	211
UDA 083	F05/F07	98	240
UDA 092	F05/F07	140	292
UDA 105	F07/F10	207	367
UDA 125	F07/F10	308	432
UDA 140	F10/F14	514	707
UDA 160	F10/F14	800	1204

120°C RETURN PNEUMATIC ACTUATORS



MODEL	STANDARD FLANGE	TORK(NM) 6 Bar Air	PRICE €
UDA 040	F03/F04	12	252
UDA 052	F04/F05/F07	25	312
UDA 063	F05/F07	45	324
UDA 075	F05/F07	74	420
UDA 083	F05/F07	98	684

TEFLON COATED DOUBLE ACTING PNEUMATIC ACTUATOR (UDA)



MODEL	STANDARD FLANGE	TORK(NM) 6 Bar Air	PRICE €
UDA 040	F03	12	
UDA 052	F03/F04	25	
UDA 063	F04/F05/F07	45	
UDA 075	F04/F05/F07	74	
UDA 083	F05/F07	98	
UDA 092	F05/F07	140	
UDA 105	F07/F10	207	
UDA 125	F07/F10	308	
UDA 140	F10/F14	514	
UDA 160	F10/F14	800	

ASK FOR PRICE



EXPROOF PNEUMATIC ACTUATORS

DOUBLE ACTING EXPROOF PNEUMATIC ACTUATOR



MODEL	TORK(NM) 6 Bar Hava	PRICE €
UDA EX 040	12	113
UDA EX 052	25	156
UDA EX 063	45	189
UDA EX 075	74	215
UDA EX 083	98	232
UDA EX 092	140	292
UDA EX 105	207	429
UDA EX 125	308	583
UDA EX 140	514	773
UDA EX 160	800	1029
UDA EX 190	1361	1972
UDA EX 210	1870	3086

SINGLE ACTING EXPROOF PNEUMATIC ACTUATOR



MODEL	TORK(NM) 6 Bar Hava	PRICE €
USA EX 052	15,5	230
USA EX 063	27	271
USA EX 075	37	340
USA EX 083	56	378
USA EX 092	82	474
USA EX 105	123	680
USA EX 125	180	1111
USA EX 140	308	1365
USA EX 160	470	1604
USA EX 190	658	2401
USA EX 210	836	3944

ELECTRIC ACTUATORS

ROTARY - LINEAR 220V / 24V ELECTRIC ACTUATOR

ROTARY 220V AC ELECTRIC ACTUATOR

MODEL	TORK(NM)	PRICE €	
		220V AC	4-20 Ma
UKST-05	50	285	
UKST-10	100	407	
UKST-20	200	596	
UKST-40	400	633	
UKST-60	600	794	
UKST-100	1000	1192	



Body : Aluminum
 Protection Class : IP 67
 Working Temperature : -10°C / +80°C
 Connection : ISO 5211
 Electric Connection : 1/2" Water Protected

IT CAN BE CONTROLLED MANUALLY IN CASE OF ENERGY FAILURE.
 ASK PRICE FOR PROPORTIONAL AND 380 V ELECTRIC ACTUATOR.

ASK FOR PRICE FOR EXPROOF APPLICATIONS

ASK FOR PRICE

ASK FOR PRICE

ROTARY 24V DC ELECTRIC ACTUATOR

MODEL	TORK(NM)	PRICE €	
		24V DC	4-20 Ma
UKST-05	50	294	
UKST-10	100	414	
UKST-20	200	603	
UKST-40	400	640	
UKST-60	600	800	
UKST-100	1000	1225	

LINEAR 220V AC ELECTRIC ACTUATOR

MODEL	TORK(NM)	PRICE €
		220V AC
UPSL-201	1000	1406
UPSL-202	2000	1778

ASK PRICE FOR PROPORTIONAL AND 380 V ELECTRIC ACTUATOR.

LINEAR 24V DC ELECTRIC ACTUATOR

MODEL	TORK(NM)	PRICE €
		24V DC
UPSL-201	1000	1452
UPSL-202	2000	1848

ASK PRICE FOR PROPORTIONAL AND 380 V ELECTRIC ACTUATOR.



ELECTRIC ACTUATORS

ROTARY ELECTRIC ACTUATOR

MODEL	TORK(NM)	PRICE €	
		220 V	24 V
UYT-05	50	380	380
UYT-10	100	541	541

Body : Aluminum
 Protection Class : IP 67
 Working Temperature : -10°C / +80°C
 Power Supply : 85-265 V AC / 24 V DC
 Control Signal : On-Off Control 24 V DC
 Working Time : 8-10 sec
 Working Temperature : -20...+60°C
 Manuel Control : Handwheel
 Position Indicator : Open/Close Continuous
 Motor : 24 V DC 6W Brush Motor
 Connection : ISO 5211
 Electric Connection : 1/2" Water Protection



30 NM ELECTRIC ACTUATOR ON-OFF 220 V AC

MODEL	TORK(NM)	PRICE €
URL-03AC	30	185

Body : Plastic ABS
 Protection Class : IP 65
 Working Class : -10°C / +80°C
 Connection : ISO 5211
 Electric Connection : 1/2" Water Protection



30 NM ELECTRIC ACTUATOR ON-OFF 24 V DC

MODEL	TORK(NM)	PRICE €
URL-03DC	30	185

Body : Plastic ABS
 Protection Class : IP 65
 Working Class : -10°C / +80°C
 Connection : ISO 5211
 Electric Connection : 1/2" Water Protection



MINI MOTORIZED BALL VALVE

SIZE	MODEL	BRASS	AISI304
		PRICE €	PRICE €
1/2"	153.MMV.015	78	106
3/4"	153.MMV.020	80	109
1"	153.MMV.025	87	118

Body : Brass
 Protection Class : IP 66
 Working Class : -4°C / +110°C
 Pressure Class : PN16
 Shaft : Nickel Coated Brass
 Spring : Stainless Steel
 Gasket : EPDM



ELECTRIC ACTUATORS

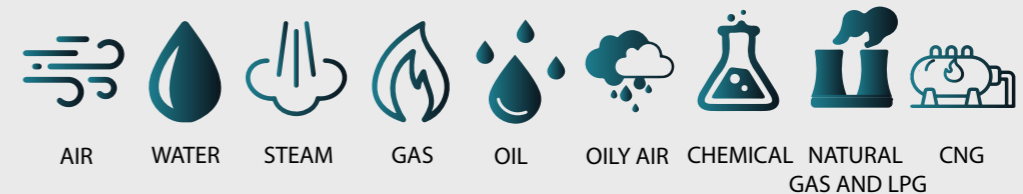
MULTI-TURN ACTUATOR



MODEL	OUTPUT CYCLE	OUTPUT POWER	MAX. CUT ACCEPTANCE		RATING (Kw)	NOMINAL FLOW(A)	CONNECTION TYPE	PRICE €
			A	B				
UDK-10	18	34	Ø33	Ø22	0,8	0,55	F10	3248
UDK-10	24	34	Ø33	Ø22	0,8	0,55	F10	3248
UDK-10	36	34	Ø33	Ø22	0,8	0,55	F10	3248
UDK-10	48	34	Ø33	Ø22	0,12	1	F10	3248
UDK-10	72	34	Ø33	Ø22	0,15	1,2	F10	3248
UDK-10	96	34	Ø33	Ø22	0,2	1,6	F10	3248
UDK-12	18	81	Ø33	Ø22	0,13	1,2	F10	4115
UDK-12	24	81	Ø33	Ø22	0,16	1,3	F10	4115
UDK-12	36	81	Ø33	Ø22	0,22	1,8	F10	4115
UDK-12	48	68	Ø33	Ø22	0,22	1,8	F10	4115
UDK-12	72	48	Ø33	Ø22	0,22	1,8	F10	4115
UDK-12	96	41	Ø33	Ø22	0,22	1,8	F10	4115
UDK-18	18	108	Ø33	Ø22	0,17	1,5	F10	5418
UDK-18	24	108	Ø33	Ø22	0,21	1,75	F10	5418
UDK-20	18	203	Ø52	Ø40	0,33	2,71	F14	6135
UDK-20	24	203	Ø52	Ø40	0,42	2,75	F14	6135
UDK-20	36	203	Ø52	Ø40	0,52	3,5	F14	6135
UDK-20	48	203	Ø52	Ø40	0,63	3,8	F14	6135
UDK-20	72	176	Ø52	Ø40	0,74	5,95	F14	6135
UDK-20	96	142	Ø52	Ø40	0,83	6,05	F14	6135
UDK-20	144	102	Ø52	Ø40	0,84	6,15	F14	6135



ACTUATED VALVES



U-PVC VALVES WITH PNEUMATIC ACTUATOR



U-PVC BALL VALVES WITH DOUBLE ACTING PNEUMATIC ACTUATOR

SIZE (DIA-mm)	PRICE €	
	WATER PVC	ACID PVC
Ø20	84	98
Ø25	84	105
Ø32	87	117
Ø40	115	154
Ø50	118	164
Ø63	146	200
Ø75	188	308
Ø90	225	379
Ø110	280	458



U-PVC VALVES WITH PNEUMATIC ACTUATOR



U-PVC BUTTERFLY VALVES WITH DOUBLE ACTING PNEUMATIC ACTUATOR

SIZE (DIA-mm)	PRICE €	
	WATER PVC	ACID PVC
Ø63	170	207
Ø75	199	239
Ø90	205	247
Ø110	217	266
Ø125	226	275
Ø140	245	300
Ø160	286	356
Ø200	418	534
Ø225	526	642
Ø250	986	1294
Ø280	986	1294
Ø315	1956	2750



U-PVC BALL VALVES WITH SINGLE ACTING PNEUMATIC ACTUATOR

SIZE (DIA-mm)	PRICE €	
	WATER PVC	ACID PVC
Ø20	158	171
Ø25	158	178
Ø32	161	190
Ø40	162	200
Ø50	191	236
Ø63	240	293
Ø75	307	426
Ø90	388	541
Ø110	562	739



U-PVC BUTTERFLY VALVES WITH SINGLE ACTING PNEUMATIC ACTUATOR

SIZE (DIA-mm)	PRICE €	
	WATER PVC	ACID PVC
Ø63	243	280
Ø75	250	290
Ø90	324	366
Ø110	396	445
Ø125	405	458
Ø140	538	593
Ø160	568	638
Ø200	662	778
Ø225	933	1049
Ø250	1318	1626
Ø280	1318	1626
Ø315	2449	3243



U-PVC VALVES WITH PNEUMATIC ACTUATOR



U-PVC SET BUTTERFLY VALVE WITH DOUBLE ACTING PNEUMATIC ACTUATOR

FOR WATER (NBR GASKET)

FOR ACID (FKM GASKET)

SIZE (DIA-mm)	CODE	PRICE €	SIZE (DIA-mm)	CODE	PRICE €
Ø63	400063	204	Ø63	500063	257
Ø75	400075	235	Ø75	500075	292
Ø90	400090	247	Ø90	500090	311
Ø110	400110	270	Ø110	500110	334
Ø125	400125	282	Ø125	500125	362
Ø140	400140	304	Ø140	500140	387
Ø160	400160	392	Ø160	500160	515
Ø200	400200	529	Ø200	500200	701
Ø225	400225	644	Ø225	500225	820
Ø250	400250	1259	Ø250	500250	1704
Ø280	400280	1285	Ø280	500280	1744
Ø315	400315	2397	Ø315	500315	3411

U-PVC SET BUTTERFLY VALVE WITH SINGLE ACTING PNEUMATIC ACTUATOR

FOR WATER (NBR GASKET)

FOR ACID (FKM GASKET)

SIZE (DIA-mm)	CODE	PRICE €	SIZE (DIA-mm)	CODE	PRICE €
Ø63	401063	277	Ø63	501063	330
Ø75	401075	285	Ø75	501075	343
Ø90	401090	366	Ø90	501090	430
Ø110	401110	449	Ø110	501110	513
Ø125	401125	460	Ø125	501125	538
Ø140	401140	597	Ø140	501140	680
Ø160	401160	674	Ø160	501160	797
Ø200	401200	773	Ø200	501200	945
Ø225	401225	1051	Ø225	501225	1227
Ø250	401250	1591	Ø250	501250	2036
Ø280	401280	1617	Ø280	501280	2076
Ø315	401315	2890	Ø315	501315	3904

U-PVC VALVES WITH ELECTRIC ACTUATOR



U-PVC BALL VALVES WITH 220V AC ELECTRIC ACTUATOR

SIZE (DIA-mm)	PRICE €	
	ADHESIVE MUF	
	WATER PVC	ACID PVC
Ø20	198	212
Ø25	198	219
Ø32	201	231
Ø40	202	241
Ø50	205	251
Ø63	382	436
Ø75	424	544
Ø90	445	599
Ø110	641	819

Ask the price for proportional.



U-PVC BALL VALVES WITH 24V DC ELECTRIC ACTUATOR

SIZE (DIA-mm)	PRICE €	
	ADHESIVE MUF	
	WATER PVC	ACID PVC
Ø20	198	212
Ø25	198	219
Ø32	201	231
Ø40	202	241
Ø50	205	251
Ø63	393	447
Ø75	435	555
Ø90	456	610
Ø110	886	1064

Ask the price for proportional.



U-PVC VALVES WITH ELECTRIC ACTUATOR



U-PVC BUTTERFLY VALVE WITH 220V AC ELECTRIC ACTUATOR

SIZE (DIA-mm)	PRICE €	
	WATER PVC	ACID PVC
Ø63	257	294
Ø75	264	304
Ø90	441	483
Ø110	453	502
Ø125	465	520
Ø140	465	520
Ø160	495	565
Ø200	741	857
Ø225	977	1093
Ø250	1362	1670
Ø280	1362	1670
Ø315	2332	3126



Ask the price for proportional.

U-PVC BUTTERFLY VALVE WITH 24V DC ELECTRIC ACTUATOR

SIZE (DIA-mm)	PRICE €	
	WATER PVC	ACID PVC
Ø63	257	294
Ø75	264	304
Ø90	452	494
Ø110	464	513
Ø125	476	531
Ø140	476	531
Ø160	506	576
Ø200	986	1102
Ø225	1033	1149
Ø250	1418	1726
Ø280	1418	1726
Ø315	2388	3182



Ask the price for proportional.

U-PVC VALVES WITH ELECTRIC ACTUATOR



U-PVC SET BUTTERFLY VALVE WITH 220V AC ELECTRIC ACTUATOR

FOR WATER(NBR GASKET)			FOR ACID(FKM GASKET)		
SIZE (DIA-mm)	CODE	PRICE €	SIZE (DIA-mm)	CODE	PRICE €
Ø63	410063	291	Ø63	510063	344
Ø75	410075	300	Ø75	510075	357
Ø90	410090	483	Ø90	510090	547
Ø110	410110	506	Ø110	510110	570
Ø125	410125	524	Ø125	510125	607
Ø140	410140	524	Ø140	510140	607
Ø160	410160	601	Ø160	510160	724
Ø200	410200	852	Ø200	510200	1024
Ø225	410225	1095	Ø225	510225	1271
Ø250	410250	1635	Ø250	510250	2080
Ø280	410280	1661	Ø280	510280	2120
Ø315	410315	2773	Ø315	510315	3787

U-PVC SET BUTTERFLY VALVE WITH 24V DC ELECTRIC ACTUATOR

FOR WATER(NBR GASKET)			FOR ACID(FKM GASKET)		
SIZE (DIA-mm)	CODE	PRICE €	SIZE (DIA-mm)	CODE	PRICE €
Ø63	410063	291	Ø63	510063	344
Ø75	410075	300	Ø75	510075	357
Ø90	410090	494	Ø90	510090	558
Ø110	410110	517	Ø110	510110	581
Ø125	410125	535	Ø125	510125	618
Ø140	410140	535	Ø140	510140	618
Ø160	410160	612	Ø160	510160	735
Ø200	410200	1097	Ø200	510200	1269
Ø225	410225	1151	Ø225	510225	1327
Ø250	410250	1691	Ø250	510250	2136
Ø280	410280	1717	Ø280	510280	2176
Ø315	410315	2829	Ø315	510315	3843

Ask the price for proportional.

BALL VALVES WITH PNEUMATIC ACTUATOR

AISI304 THREADED BALL VALVES WITH DOUBLE ACTING PNEUMATIC ACTUATOR

SIZE	PRICE €			
	2 PIECES	3 PIECES	3 WAY L PORT	3 WAY T PORT
DN15 - 1/2"	114	125	145	152
DN20 - 3/4"	126	131	199	209
DN25 - 1"	183	191	246	257
DN32 - 1 1/4"	208	212	321	341
DN40 - 1 1/2"	279	274	400	426
DN50 - 2"	330	339	483	516
DN65 - 2 1/2"	576	554	782	840
DN80 - 3"	762	748	1566	1692
DN100 - 4"	-	1160	-	-



Body : AISI 304

ASK THE PRICE FOR THREADED BALL VALVE WITH SINGLE ACTING PNEUMATIC ACTUATOR

ASK THE PRICE FOR 316 QUALITY.

AISI304 FLANGED BALL VALVES WITH DOUBLE ACTING PNEUMATIC ACTUATOR

SIZE	PRICE €	
	2 PIECES	3 PIECES
DN15 - 1/2"	223	218
DN20 - 3/4"	251	260
DN25 - 1"	302	337
DN32 - 1 1/4"	378	429
DN40 - 1 1/2"	522	522
DN50 - 2"	624	657
DN65 - 2 1/2"	834	918
DN80 - 3"	958	1210
DN100 - 4"	1384	1650



Body : AISI 304

ASK THE PRICE FOR SINGLE ACTING PNEUMATIC ACTUATOR THREADED BALL VALVE

ASK THE PRICE FOR 316.

BUTTERFLY VALVES WITH PNEUMATIC ACTUATOR

WAFER TYPE BUTTERFLY VALVES WITH DOUBLE ACTING PNEUMATIC ACTUATOR

SIZE	PRICE €		
	IRON DISC	AISI304 DISC	AISI316 DISC
DN40 - 1 1/2"	163	174	182
DN50 - 2"	165	175	184
DN65 - 2 1/2"	184	187	198
DN80 - 3"	204	220	234
DN100 - 4"	237	271	292
DN125 - 5"	281	325	349
DN150 - 6"	316	388	433
DN200 - 8"	579	706	775
DN250 - 10"	812	1091	1246
DN300 - 12"	936	1383	1607



Body : GGG-40 Sfero Casting

Gasket : EPDM (ASK THE PRICE FOR NBR AND VITON GASKET)

Shaft : Stainless Steel

ASK THE PRICE FOR SINGLE ACTING PNEUMATIC ACTUATOR BUTTERFLY VALVE

LUG TYPE BUTTERFLY VALVES WITH DOUBLE ACTING PNEUMATIC ACTUATOR

SIZE	PRICE €		
	IRON DISC	AISI304 DISC	AISI316 DISC
DN40 - 1 1/2"	177	184	194
DN50 - 2"	181	187	198
DN65 - 2 1/2"	187	205	218
DN80 - 3"	230	247	271
DN100 - 4"	278	309	340
DN125 - 5"	332	391	425
DN150 - 6"	381	464	515
DN200 - 8"	716	864	964
DN250 - 10"	791	1259	1387
DN300 - 12"	1170	1642	1831



Body : GGG-40 Sfero Casting

Gasket : EPDM (ASK THE PRICE FOR NBR AND VITON GASKET)

Shaft : Stainless Steel

BUTTERFLY VALVES WITH ELECTRIC ACTUATOR



WAFER TYPE BUTTERFLY VALVE WITH 220V AC ELECTRIC ACTUATOR

SIZE	PRICE €		
	IRON DISC	AISI304 DISC	AISI316 DISC
DN40 - 1 1/2"	250	261	269
DN50 - 2"	252	262	271
DN65 - 2 1/2"	261	274	285
DN80 - 3"	440	456	470
DN100 - 4"	473	507	528
DN125 - 5"	501	545	569
DN150 - 6"	677	749	794
DN200 - 8"	1030	1157	1226
DN250 - 10"	1235	1514	1669
DN300 - 12"	1560	2007	2231

WAFER TYPE BUTTERFLY VALVE WITH 24V DC ELECTRIC ACTUATOR

SIZE	PRICE €		
	IRON DISC	AISI304 DISC	AISI316 DISC
DN40 - 1 1/2"	250	261	269
DN50 - 2"	252	262	271
DN65 - 2 1/2"	261	274	285
DN80 - 3"	451	467	481
DN100 - 4"	484	518	539
DN125 - 5"	512	556	580
DN150 - 6"	686	758	803
DN200 - 8"	1039	1166	1235
DN250 - 10"	1244	1523	1678
DN300 - 12"	1569	2016	2240

Body : GGG-40 Sfero Cast
 Gasket : EPDM (ASK THE PRICE FOR NBR AND VITON GASKETS)
 Shaft : Stainless Steel

BUTTERFLY VALVES WITH ELECTRIC ACTUATOR



LUG TYPE BUTTERFLY VALVE WITH 220V AC ELECTRIC ACTUATOR

SIZE	PRICE €		
	IRON DISC	AISI304 DISC	AISI316 DISC
DN40 - 1 1/2"	264	271	281
DN50 - 2"	268	274	285
DN65 - 2 1/2"	274	292	305
DN80 - 3"	466	483	507
DN100 - 4"	514	545	576
DN125 - 5"	552	611	645
DN150 - 6"	742	825	876
DN200 - 8"	1167	1315	1415
DN250 - 10"	1214	1682	1810
DN300 - 12"	1794	2266	2455

LUG TYPE BUTTERFLY VALVE WITH 24V DC ELECTRIC ACTUATOR

SIZE	PRICE €		
	IRON DISC	AISI304 DISC	AISI316 DISC
DN40 - 1 1/2"	264	271	281
DN50 - 2"	268	274	285
DN65 - 2 1/2"	274	292	305
DN80 - 3"	477	494	518
DN100 - 4"	525	556	587
DN125 - 5"	563	622	656
DN150 - 6"	751	834	885
DN200 - 8"	1176	1324	1424
DN250 - 10"	1223	1691	1819
DN300 - 12"	1803	2275	2464

Body : GGG-40 Sfero Cast
 Gasket : EPDM (ASK THE PRICE FOR NBR AND VITON GASKETS)
 Shaft : Stainless Steel

BALL VALVES WITH ELECTRIC ACTUATOR

AISI304 THREADED BALL VALVES WITH 220V AC ELECTRIC ACTUATOR

SIZE	PRICE €			
	2 PIECES	3 PIECES	3 WAY L PORT	3 WAY T PORT
DN15 - 1/2"	240	251	271	277
DN20 - 3/4"	252	256	295	305
DN25 - 1"	278	287	318	329
DN32 - 1 1/4"	304	308	581	601
DN40 - 1 1/2"	539	533	642	668
DN50 - 2"	590	598	880	913
DN65 - 2 1/2"	986	964	1397	1455
DN80 - 3"	1377	1363	2114	2240
DN100 - 4"	-	1708	-	-

Body : Stainless Steel AISI 304

ASK THE PRICE FOR 316.



AISI304 THREADED BALL VALVES WITH 24V DC ELECTRIC ACTUATOR

SIZE	PRICE €			
	2 PIECES	3 PIECES	3 WAY L PORT	3 WAY T PORT
DN15 - 1/2"	240	251	271	277
DN20 - 3/4"	252	256	295	305
DN25 - 1"	278	287	318	329
DN32 - 1 1/4"	304	308	593	613
DN40 - 1 1/2"	551	546	654	680
DN50 - 2"	602	610	890	923
DN65 - 2 1/2"	995	973	1407	1465
DN80 - 3"	1387	1373	2124	2249
DN100 - 4"	-	1718	-	-

Body : Stainless Steel AISI 304

ASK THE PRICE FOR 316.

BALL VALVES WITH ELECTRIC ACTUATOR

AISI304 FLANGED BALL VALVES WITH 220V AC ELECTRIC ACTUATOR

SIZE	PRICE €	
	2 PIECES	3 PIECES
DN15 - 1/2"	349	343
DN20 - 3/4"	366	385
DN25 - 1"	398	432
DN32 - 1 1/4"	474	525
DN40 - 1 1/2"	782	782
DN50 - 2"	883	916
DN65 - 2 1/2"	1243	1328
DN80 - 3"	1573	1825
DN100 - 4"	1932	2198

Body : Stainless Steel AISI 304

ASK THE PRICE FOR 316.



AISI304 FLANGED BALL VALVES WITH 24V DC ELECTRIC ACTUATOR

SIZE	PRICE €	
	2 PIECES	3 PIECES
DN15 - 1/2"	349	343
DN20 - 3/4"	376	385
DN25 - 1"	398	432
DN32 - 1 1/4"	474	525
DN40 - 1 1/2"	794	794
DN50 - 2"	895	928
DN65 - 2 1/2"	1253	1338
DN80 - 3"	1583	1835
DN100 - 4"	1941	2208

Body : Stainless Steel AISI 304

ASK THE PRICE FOR 316.



STAINLESS STEEL BUTTERFLY VALVES

STAINLESS STEEL BUTTERFLY VALVE WITH PNEUMATIC ACTUATOR



DIAMETER (MM)	PRICE €
33	
42	
48	
60	
76	
88	
114	

ASK FOR PRICE

Gasket : EPDM, Viton, Teflon, Silicon
 Body : AISI 304/AISI 316
 Disc : AISI 304/AISI 316
 Connection : Welded, Threaded, Clamped
 Pressure Class: PN6/PN10

STAINLESS STEEL BUTTERFLY VALVE



DIAMETER (MM)	PRICE €
33	
42	
48	
60	
76	
88	
114	

ASK FOR PRICE

Gasket : EPDM, Viton, Teflon, Silicon
 Body : AISI 304/AISI 316
 Disc : AISI 304/AISI 316
 Connection : Welded, Threaded, Clamped
 Pressure Class: PN6/PN10

PNEUMATIC ACTUATOR ACCESSORIES

LIMIT SWITCH BOX

MODEL	PRICE €
UAPL 210	50

Body : Aluminum
 Protection Class : IP67



EXPROOF SWITCH BOX

MODEL	PRICE €
UAPL 410	180

Body : Aluminum
 Protection Class : IP68/ExdIICT6



NAMUR SOLENOID VALVE

MODEL	PRICE €
1/4" - 5/2 SINGLE COIL	40
1/4" - 3/2 SINGLE COIL	40
1/4" - 5/2 DOUBLE COIL	80

Body : Aluminum
 Protection Class : IP67



EXPROOF NAMUR SOLENOID VALVE

MODEL	PRICE €
1/4" - 5/2 SINGLE COIL	120
1/4" - 3/2 SINGLE COIL	120
1/4" - 5/2 DOUBLE COIL	240



ELECTRO PNEUMATIC POSITIONER

MODEL	PRICE €
U-EPR ROTARY 4-20mA	800
U-EPL LINEAR 4-20mA	800

Protection Class : IP67
 Feed Pressure Max : 7 Bar
 ASK THE PRICE FOR FEEDBACK MODEL



IP CONVERTOR

MODEL	PRICE €
U-IP IP CONVERTER 4-20 mA	450



VALVE-ACTUATOR CONNECTION PARTS

GEAR BOX

MODEL	CONNECTION PARTS	PRICE €
3270001	24.1	95
3270002	30.1	165
3270003	50.1	240
3270004	80.1	495



SEPARATION LEVER GEAR BOX

MODEL	CONNECTION PARTS	PRICE €
3270101	24.1	201
3270102	30.1	248
3270103	50.1	371
3270104	80.1	586



VALVE-ACTUATOR CONNECTION PARTS

MODEL	CONNECTION PARTS	PRICE €
152F05 001	F05	30
152F07 001	F07	50
152F10 001	F10	70



MODEL	CONNECTION PARTS	PRICE €
152F05 002	F05	40
152F07 002	F07	50
152F10 002	F10	110



REDUCTIONS

MODEL	CONNECTION PARTS	PRICE €
RED001...01	11X9 Reduction	10
RED001...02	14X9 Reduction	10
RED001...03	14X11 Reduction	10
RED001...04	17X11 Reduction	10
RED001...05	17X14 Reduction	10
RED001...06	22X14 Reduction	10
RED001...07	22X17 Reduction	10
RED001...08	27X17 Reduction	10
RED001...09	27X22 Reduction	10
RED001...10	36X27 Reduction	10



STEAM TRAPS



STEAM TRAP



BALL FLOAT THREADED STEAM TRAP

MODEL	SIZE (INC)	PRICE €
UKS 70 - D	1/2"	355
	3/4"	360
	1"	385
	1 1/4"	1085
	1 1/2"	1170
	2"	1360

Body : GGG 40.3 Sfero Cast
 Cover : GGG 40.3 Sfero Cast
 Max. Working Pressure : 16 BAR
 Max. Working Temp. : 250 °C
 Δp : 4.5 - 10 - 14 BAR



STEAM TRAP

INVERTED BUCKET FLANGED STEAM TRAP

MODEL	SIZE (DN)	PRICE €
UTK - 50 F	15	247
	20	275
	25	350
	32	412
	40	566
	50	755

Body : GGG 40.3 Sfero Cast
 Cover : GGG 40.3 Sfero Cast
 Max. Working Pressure : 16 BAR
 Max. Working Temp. : 250 °C
 Δp : 4.5 - 10 - 14 BAR



BALL FLOAT FLANGED STEAM TRAP

MODEL	SIZE (DN)	PRICE €
UKS 70 - F	15	400
	20	425
	25	500
	32	1235
	40	1250
	50	1540

Body : GGG 40.3 Sfero Cast
 Cover : GGG 40.3 Sfero Cast
 Max. Working Pressure : 16 BAR
 Max. Working Temp. : 250 °C
 Δp : 4.5 - 10 - 14 BAR



AIR DRAIN FROM LIQUID SYSTEMS

MODEL	SIZE (INC)	PRICE €
UKHA - 70 D	1/2"	385
	3/4"	418
	1"	440

Body : GGG 40.3 Sfero Cast
 Cover : GGG 40.3 Sfero Cast
 Max. Working Pressure : 16 BAR
 Max. Working Temp. : 250 °C



INVERTED BUCKET THREADED STEAM TRAP

MODEL	SIZE (INC)	PRICE €
UTK - 50 D	1/2"	223
	3/4"	241
	1"	309
	1 1/4"	378
	1 1/2"	532
	2"	618

Body : GGG 40.3 Sfero Cast
 Cover : GGG 40.3 Sfero Cast
 Max. Working Pressure : 16 BAR
 Max. Working Temp. : 250 °C
 Δp : 4.5 - 10 - 14 BAR



LIQUID DRAIN FROM AIR SYSTEMS

MODEL	SIZE (INC)	PRICE €
UKSA - 70 D	1/2"	418
	3/4"	440
	1"	462

Body : GGG 40.3 Sfero Cast
 Cover : GGG 40.3 Sfero Cast
 Max. Working Pressure : 16 BAR
 Max. Working Temp. : 250 °C



STEAM TRAP



THERMODYNAMIC THREADED STEAM TRAP

MODEL	SIZE (INC)	PRICE €
UKT - 70 D	1/2"	165
	3/4"	165
	1"	165



Body : Carbon Steel
 Cover : Stainless Steel
 Strainer Disc Seat : Stainless Steel
 Max. Working Pressure : 40 BAR
 Max. Working Temp. : 400 °C
 Min. Operating Pressure: 0.3 BAR

THERMODYNAMIC FLANGED STEAM TRAP

MODEL	SIZE (INC)	PRICE €
UKT - 70 F	15	264
	20	275
	25	308



Body : Carbon Steel
 Cover : Stainless Steel
 Strainer Disc Seat : Stainless Steel
 Max. Working Pressure : 40 BAR
 Max. Working Temp. : 400 °C
 Min. Operating Pressure: 0.3 BAR

STAINLESS STEEL THERMODYNAMIC STEAM TRAP

MODEL	SIZE (INC)	PRICE €
UKT - 77 D	1/2"	220
	3/4"	242
	1"	308



Body : ASTM A743 GrCA40F
 Cover : AISI 316 Stainless Steel
 Strainer Disc Seat : 420 Stainless Steel
 Max. Working Pressure : 40 BAR
 Max. Working Temp. : 400 °C
 Min. Operating Pressure: 0.3 BAR
 Connection : BSP and NPT threaded optional

STEAM TRAP



THERMOSTATIC STEAM TRAP

SIZE (INC)	UKK 41 THREADED ART.NO	PRICE €
1/2"	UKK 4101	176
3/4"	UKK 4102	176



Body and Cover : Stainless Steel
 Thermostatic Capsule : HASTELLOY
 Strainer Disc Seat : 45 BAR
 Max. Working Temp. : 400 °C

SAMPLING CONTAINER

SIZE (INC)	MODEL	PRICE €
DN80	UOK	880



Body : AISI 316 Stainless Steel
 Serpentine : 1/2" AISI 316 Stainless Steel L
 Serpentine Nominal Pressure : 45 BAR
 Cold Water Input-Output : 1/2"
 Body Nominal Pressure : PN16

AUTOMATIC BLOWDOWN SYSTEM

SIZE (DN)	MODEL	PRICE €
DN40	UKDBS	1210



BLOWDOWN VALVE
 DN40, PN40 STAINLESS STEEL CAST
 SWITCH BOX
 SINGLE ACTING (Spring Return Pneumatic Actuator)
 3/2 DIRECTION VALVE
 TIMER

STEAM TRAP



STEAM

BRASS VACUUM BREAKER

SIZE (INC)	MODEL	PRICE €
1/2"	UKV - 70 D	96

Body : Brass
 Interior : Stainless Steel
 Max. Working Pressure : 16 BAR
 Max. Working Temp. : 260 °C



STAINLESS STEEL VACUUM BREAKER

SIZE (INC)	MODEL	PRICE €
1/2"	UKV - 70 DP	102

Body : Stainless Steel
 Interior : Stainless Steel
 Max. Working Pressure : 40 BAR
 Max. Working Temp. : 400 °C



THREADED FLOW INDICATOR

SIZE (INC)	MODEL	PRICE €
1/2"	2510015	59
3/4"	2510020	62
1"	2510025	69
1 1/4"	2510032	91
1 1/2"	2510040	100
2"	2510050	117



FLANGED FLOW INDICATOR

SIZE (DN)	MODEL	PRICE €
15	2520015	73
20	2520020	78
25	2520025	90
32	2520032	103
40	2520040	121
50	2520050	155
65	2520065	223
80	2520080	241
100	2520100	395



Body : GGG-40
 Cover : GGG-40
 Max. Working Pressure: 16 BAR
 Glass : Tempered Glass 150°C
 Sealing : PTFE

SAFETY VALVES



STEAM

PROPORTIONAL LIFT SAFETY VALVE

MODEL	SIZE	CAST IRON	DUCTILE IRON
		PRICE €	PRICE €
UOK-10	DN25	354	426
	DN32	395	470
	DN40	446	573
	DN50	556	686
	DN65	755	902
	DN80	1015	1245
	DN100	1554	1859

Body : GGG-25 / GGG-40
 Cover : GGG-25 / GGG-40
 Spring : AISI302
 Seat : AISI304
 Disc : AISI304
 Shaft : AISI304



FULL LIFT SAFETY VALVE

MODEL	SIZE	PRICE €
UTK-10	DN25 / 40	508
	DN32 / 50	580
	DN40 / 65	659
	DN50 / 80	813
	DN65 / 100	1118
	DN80 / 125	1543
DN100 / 150	2521	

Body : GGG-40
 Cover : GGG-40
 Spring : AISI302
 Seat : AISI304
 Disc : AISI304
 Shaft : AISI304



STAINLESS STEEL THREADED SAFETY VALVE

MODEL	SIZE(INC)	PRICE €
UEV	1/2"	498
	3/4"	549
	1"	652
	1 1/4"	841
	1 1/2"	1012
	2"	1852



STEAM TRAP SPARE PARTS AND ACCESSORIES

LEVEL AND FLOW

SPARE PARTS AND ACCESSORIES

MODEL	UKS-70D BODY (THREADED)		UKS-70F BODY (FLANGED)	
	SIZE (INC)	PRICE €	SIZE (DN)	PRICE €
UKS-70D and UKS-70F BODY	1/2"	100	15	180
	3/4"	100	20	180
	1"	110	25	200
	1 1/4"	270	32	660
	1 1/2"	270	40	660
	2"	450	50	720
MODEL	UKS-70D COVER (THREADED)		UKS-70F COVER (FLANGED)	
	SIZE (INC)	PRICE €	SIZE (DN)	PRICE €
UKS-70D and UKS-70F COVER	1/2"	80	15	150
	3/4"	80	20	150
	1"	90	25	180
	1 1/4"	300	32	420
	1 1/2"	300	40	420
	2"	420	50	480
MODEL	UKS-70D COVER GASKET (THREADED)		UKS-70F COVER GASKET (FLANGED)	
	SIZE (INC)	PRICE €	SIZE (DN)	PRICE €
UKS-70D and UKS-70F COVER GASKET	1/2"	10	15	10
	3/4"	10	20	10
	1"	10	25	10
	1 1/4"	40	32	40
	1 1/2"	40	40	40
	2"	40	50	40
MODEL	UKS-70D FLOAT (THREADED)		UKS-70F FLOAT (FLANGED)	
	SIZE (INC)	PRICE €	SIZE (DN)	PRICE €
UKS-70D and UKS-70F FLOAT	1/2"	32	15	32
	3/4"	35	20	35
	1"	35	25	35
	1 1/4"	60	32	60
	1 1/2"	60	40	60
	2"	60	50	60
MODEL	UKS-70D CAPSULE (THREADED)		UKS-70F CAPSULE (FLANGED)	
	SIZE (INC)	PRICE €	SIZE (DN)	PRICE €
UKS-70D and UKS-70F CAPSULE	1/2"	45	15	45
	3/4"	45	20	45
	1"	45	25	45
	1 1/4"	45	32	45
	1 1/2"	45	40	45
	2"	45	50	45

GLASS LEVEL GAUGES

SIZE (MM)	PRICE €		SIZE (MM)	PRICE €	
	2215001	2216001		2215001	2216001
				PN16	PN40
300	421		695	903	
310	462		775	947	
340	502		810	993	
350	502		900	1039	
370	572		990	1231	
400	612		1000	1275	
440	622	ASK FOR PRICE	1200	1606	ASK FOR PRICE
460	660		1500	2015	
500	676		2000	2604	
510	774		2500	3308	
575	794		3000	4659	
635	826				

Body : GGG-25 Cast Iron
 Connection : DN20 PN16 Flanged
 Max. Working Pressure : 16 BAR (PN40 Optional)
 Max. Working Temp. : 250 °C



MAGNETIC LEVEL GAUGES

SIZE (MM)	PRICE €	SIZE (MM)	PRICE €
300&310	397	1100	794
340&350	433	1200	824
370	470	1300	846
400	488	1400	895
440&450	506	1500	927
500&510	530	1600	955
550	546	1700	981
600	562	1800	1023
695&700	602	1900	1107
750	638	2000	1155
800	654	2500	1330
850	682	3000	1594
900	710	4000	1989
1000	758		

Body : Stainless Steel
 Connection : DN20 PN16 Flanged
 Max. Working Pressure : 16 BAR
 Max. Working Temp. : 200 °C



NOTE: ASK THE PRICE FOR CONTACT OUTPUT APPLICATION.

LEVEL AND FLOW

STAINLESS STEEL MINI LEVEL SWITCH

SIZE	MODEL	PRICE €
1/2"	UPMS-8	150

Pipe and Float : AISI 304 Stainless Steel
 Working Pressure : 5 BAR
 Working Temp. : -10...+150 °C
 Supply Voltage : 220V AC
 Connection : 1/2" Out Threaded
 Minimum Density : 0.7 GR/CM3
 Installation Method : Horizontal
 Electric Connection : Socket



STAINLESS STEEL LEVEL TANK FLOAT

SIZE	MODEL	PRICE €
1/2"	2710015	160
3/4"	2710020	170
1"	2710025	180

Float Diameter : 150 MM
 Connection : Threaded
 Working Pressure : 5 BAR
 Working Temperature : -10...+150 °C



FLOW SWITCH

SIZE	MODEL	PRICE €
1"	UAKS 16	70

Body : Brass
 Plate : AISI 304 Stainless Steel
 Feed : All Voltage
 Applicable Line Diameter : 1"- 6"



LEVEL AND FLOW

STEAM SEPERATOR



WELDED / THREADED			FLANGED		
SIZE	MODEL	PRICE €	PN16	PN40	
1/2"	2430015	107	DN15	2410015	119
3/4"	2430020	134	DN20	2410020	148
1"	2430025	148	DN25	2410025	165
1 1/4"	2430032	172	DN32	2410032	213
1 1/2"	2430040	199	DN40	2410040	237
2"	2430050	246	DN50	2410050	306
2 1/2"	2430065	306	DN65	2410065	367
3"	2430080	422	DN80	2410080	518
4"	2430100	529	DN100	2410100	590
5"	2430125	793	DN125	2410125	875
6"	2430150	1060	DN150	2410150	1249
8"	2430200	1578	DN200	2410200	1790
10"	2430250	2915	DN250	2410250	3412
12"	2430300	4005	DN300	2410300	4708

LEVEL AND FLOW

2 WAY MANOMETER TAP / VALVE

ÖLÇÜ	WAY	PRICE €
1/2"	2 WAY	200

Adjustment Nut	: DIN 16283
Hand Control	: Hard Plastic
Salmastra	: Grafit
Body	: 1,4571(316Ti) Stainless Steel
Pressure Class	: PN40
Connection	: G1/2 Threaded(Male-Female)
Working Temperature	: 300 °C



3 WAY MANOMETER TAP / VALVE

ÖLÇÜ	WAY	PRICE €
1/2"	3 WAY	400

Adjustment Nut	: DIN 16283
Hand Control	: Hard Plastic
Salmastra	: Grafit
Body	: 1,4571(316Ti) Stainless Steel
Pressure Class	: PN40
Connection	: G1/2 Threaded(Male-Female)
Working Temperature	: 300 °C

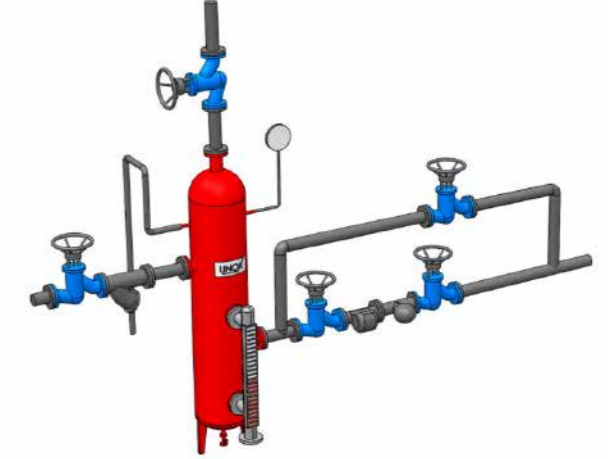


FLASH STEAM RECOVERY SYSTEM

FLASH STEAM RECOVERY SYSTEM

Body	: ST37 Carbon Steel
Working Pressure	: 10 BAR
Working Temperature	: Max. 150°C
Connection	: PN10/PN16

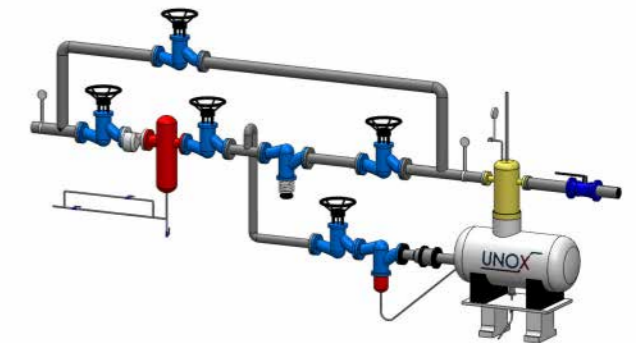
It saves fuel and increases system efficiency.
Please contact us for information and prices.



DEAGGER SYSTEM

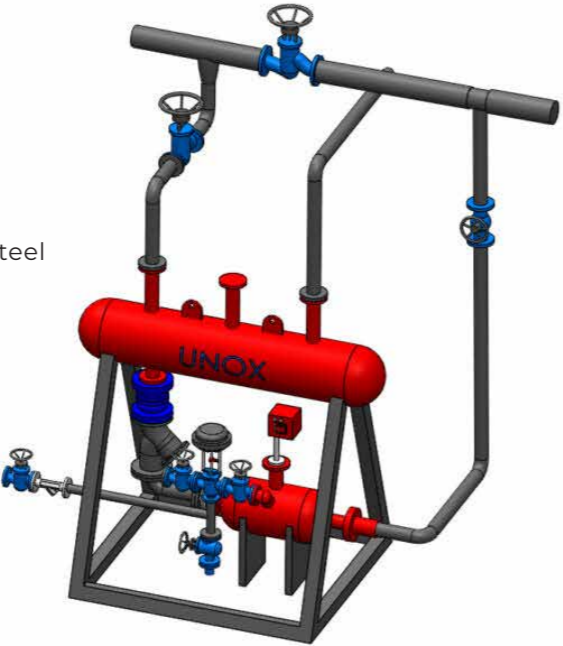
Body	: ST37 Carbon Steel / Stainless Steel
Duct	: ST37 Carbon Steel / Stainless Steel
Working Pressure	: 10 BAR
Working Temperature	: Max. 145 °C

It saves fuel and increases system efficiency.
Please contact us for information and prices.



FLASH STEAM RECOVERY SYSTEM

CONDENSED WATER PUMP

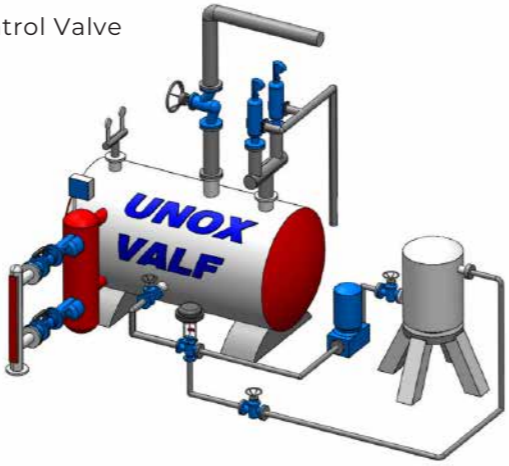


- Duct and Tank : Stainless Steel / ST37 Carbon Steel
- Working Pressure : 10 BAR
- Working Temperature : Max. 180°C
- Feed Energy : 220V AC / 24V DC
- Feed Air : 4 BAR

It saves fuel and increases system efficiency.
Please contact us for information and prices.



BOILER WATER PROPORTIONAL FEEDING SYSTEM



- Level Control Valve : UNOX 33609 Proportional 3 Way Control Valve
- Duct and Tank : Stainless Steel / ST37 Carbon Steel
- Working Temperature : 25 BAR
- Working Pressure : Max. 225°C
- Feed Energy : 220V AC / 24V DC
- Level Electrodes : EA20 Fantini Cosmi
- Level Control Device : E03M Fantini Cosmi

It saves fuel and increases system efficiency.
Please contact us for information and prices.



PID CONTROL SYSTEMS

PNEUMATIC PRESSURE PID CONTROL SYSTEM

- Pneumatic Control Valve
- E-49 Control Panle
- Unox Pressure Transmitter
- High control sensitivity
- Easy installation and adjustment
- Integration with SCADA and PLC systems
- High efficiency

Contact us for price information.



PNEUMATIC TEMPERATURE PID CONTROL SYSTEM

- Pneumatic Control Valve For Hot Oil
- E-49 Control Panle
- Unox PT100
- High control sensitivity
- Easy installation and adjustment
- Integration with SCADA and PLC systems
- High efficiency

Contact us for price information.



PNEUMATIC FLOW PID CONTROL SYSTEMS

- Pneumatic Control Valve
- E-49 Control Panle
- Unox Electromagnetic Flow Meter
- High control sensitivity
- Easy installation and adjustment
- Integration with SCADA and PLC systems
- High efficiency

Contact us for price information.



PID CONTROL SYSTEMS

ELECTRIC PRESSURE PID CONTROL SYSTEMS

- Motorized Proportional Control Valve
- E-49 Control Panle
- Unox Pressure Transmitter
- High control sensitivity
- Easy installation and adjustment
- Integration with SCADA and PLC systems
- High efficiency

Contact us for price information.



ELECTRIC TEMPERATURE PID CONTROL SYSTEMS

- Motorized Proportional Control Valve For Hot Oil
- E-49 Control Panle
- Unox PT100
- High control sensitivity
- Easy installation and adjustment
- Integration with SCADA and PLC systems
- High efficiency

Contact us for price information.



ELECTRIC FLOW PID CONTROL SYSTEMS

- Motorized Proportional Control Valve
- E-49 Control Panle
- Unox Electromagnetic Flow Meter
- High control sensitivity
- Easy installation and adjustment
- Integration with SCADA and PLC systems
- High efficiency

Contact us for price information.



SINGLE ACTING PNEUMATIC PISTON VALVE



ANGLE SEAT VALVE THREADED

SIZE (INC)	PRICE €	
	63MM ACTUATOR	90MM ACTUATOR
1/2"	99	
3/4"	121	
1"	143	
1 1/4"	264	308
1 1/2"	286	330
2"	352	396
2 1/2"		605

- Body : Stainless Steel
- Working Temperature : 180 °C
- Working Pressure : PN16
- Feed Pressure : 3-8 BAR
- Connection : Threaded



ASK THE PRICE FOR DOUBLE ACTING AND NORMALLY OPEN VALVES

NOTE: IN STEAM APPLICATIONS, PLEASE SELECT 90MM ACTUATOR FOR 1 1/4" AND OVER DIMENSIONS. YOU CAN PREFER 63MM ACTUATOR IN LIQUID APPLICATIONS.

ANGLE SEAT VALVE FLANGED

SIZE (DN)	PRICE €	
	63MM ACTUATOR	90MM ACTUATOR
15	228	
20	253	
25	317	
32	443	547
40	480	633
50	607	658
65		810

- Body : Stainless Steel
- Working Temperature : 180 °C
- Working Pressure : PN16
- Feed Pressure : 3-8 BAR
- Connection : Threaded

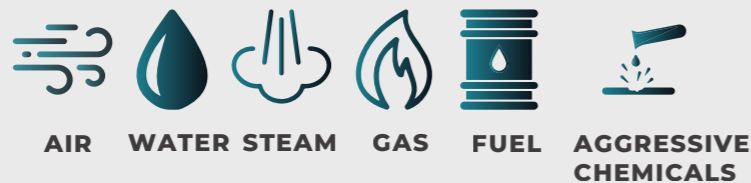


ASK THE PRICE FOR DOUBLE ACTING AND NORMALLY OPEN VALVES

NOTE: IN STEAM APPLICATIONS, PLEASE SELECT 90MM ACTUATOR FOR 1 1/4" AND OVER DIMENSIONS. YOU CAN PREFER 63MM ACTUATOR IN LIQUID APPLICATIONS.



CONTROL VALVES



PNEUMATIC CONTROL VALVE

PNEUMATIC BLOWDOWN VALVE - 33602



SIZE(DN)	KVS	PRICE €
40	25	1150
50	40	1190

- Body : GGG-40 Sfero Cast
- Pressure Class : PN16 - PN25
- Safety Function : Normally Closed - Normally Open
- Sealing Class : CLASS VI (PTFE Soft Sealing)
- Characteristic : On - Off
- Neck Sealing : CLASS VI - V Packet
- Max. Working Temp. : 220°C
- Flange Connection : DIN 1092-2 (PN16)

ASK FOR PRICE FOR ADDITIONAL 1/4" 3/2 SOLENOID VALVE ON ACTUATOR.
 ASK THE PRICE FOR DIGITAL ON-OFF TIMER.
 ASK THE PRICE FOR ADDITIONAL LIMIT SWITCH.

PNEUMATIC CONTROL VALVE

2 WAY PNEUMATIC ON-OFF CONTROL VALVE - 33603



BASIC (STANDART) FEATURED:

Body	: GGG-40.3 Sfero Cast
Pressure Class	: PN25
Safety Function	: Normally Closed - Normally Open
Sealing Class	: CLASS VI (PTFE Soft Sealing)
Characteristic	: On - Off
Neck Sealing	: CLASS VI - V Packet
Max. Working Temp.	: 220°C
Flange Connection	: DIN 1092-2 (PN16)

ACCESSORIES:

Ask for Limit Switch addition.
Ask for Hand Control.
Ask for Solenoid Valve addition.



SIZE(DN)	KVS m ³ /h	Actuator cm ²	Delta P Barg	PRICE €
15	4	240	14	530
20	6.3	240	14	560
25	10	240	14	585
32	16	240	12	740
40	25	240	11	800
50	35	240	10	870
65	60	350	9	1390
80	80	350	10	1450
100	125	PISTON TYPE	10	2500
125	200	PISTON TYPE	9	
150	260	PISTON TYPE	8	

DN100, DN125, DN150 Body Material is PN16 Cast Iron.
Ask for Different Body Materials.

ASK FOR PRICE

PNEUMATIC CONTROL VALVE

3 WAY PNEUMATIC ON-OFF CONTROL VALVE - 33610



BASIC (STANDART) FEATURED:

Body	: GGG-40.3 Sfero Cast
Pressure Class	: PN25
Function	: Mixing - Diverting
Sealing Class	: CLASS VI (PTFE Soft Sealing)
Characteristic	: On - Off
Neck Sealing	: CLASS VI - V Packet
Max. Working Temp.	: 220°C
Flange Connection	: DIN 1092-2 (PN16)

ACCESSORIES:

Ask for Limit Switch addition.
Ask for Hand Control.
Ask for Solenoid Valve addition.



SIZE(DN)	KVS m ³ /h	Actuator cm ²	Delta P Barg	PRICE €
15	4	240	14	860
20	6	240	14	900
25	10	240	14	920
32	16	240	12	1330
40	25	240	11	1420
50	35	240	10	1520
65	60	350	9	2500
80	80	350	10	2610
100	125	PISTON TYPE	10	3920
125	200	PISTON TYPE	9	
150	260	PISTON TYPE	8	

DN100, DN125, DN150 Body Material is PN16 Cast Iron.
Ask for Different Body Materials.

ASK FOR PRICE

PNEUMATIC CONTROL VALVE

2 WAY PNEUMATIC PROPORTIONAL CONTROL VALVE - 33604



BASIC (STANDART) FEATURED:

- Body : GGG-40.3 Sfero Cast
- Pressure Class : PN25
- Safety Function : Normally Closed - Normally Open
- Sealing Class : CLASS VI (PTFE Soft Sealing)
- Characteristic : Proportional
- Neck Sealing : CLASS VI - V Packet
- Max. Working Temp. : 220°C
- Flange Connection : DIN 1092-2 (PN16)

Positioner not included.

ACCESSORIES:

- Ask for Limit Switch addition.
- Ask for Hand Control.



Signal Pressure(Bar)	0,2-1	0,4-2	0,6-3	1,4-2,3
Supply Air Pressure(Bar)	1,8	2,6	3,5	2,8

SIZE(DN)	KVS m ³ /h	Actuator cm ²	PRICE Euro € / Qty			
			0,2-1 1,8	0,4-2 2,6	0,6-3 3,5	1,4-2,3 2,8
15	4	240	1180 14 Barg	1190 14 Barg	1202 14 Barg	
20	6.3	240	1216 5,5 Barg	1254 14 Barg	1291 14 Barg	
25	10	240	1284 5,4 Barg	1291 14 Barg	1347 14 Barg	
32	16	240	1320 3 Barg	1340 8,5 Barg	1376 14 Barg	
40	30	240	1358 1,5 Barg	1382 5,5 Barg	1423 9 Barg	1460 9 Barg
		350	1464 3,3 Barg	1478 8,7 Barg	1497 14 Barg	1516 14 Barg
50	40	240	1366 1,2 Barg	1395 4,8 Barg	1438 7 Barg	1538 8,5 Barg
		350	1520 1,7 Barg	1536 5,2 Barg	1550 8,8 Barg	1564 14 Barg
65	60	240	1572 2,4 Barg	1591 4,2 Barg	1640 5,3 Barg	1665 8 Barg
		350	1638 1 Barg	1647 2,9 Barg	1684 4,7Barg	1722 8 Barg
80	80	350	1740 1 Barg	1815 3 Barg	1854 3 Barg	1872 3 Barg
100	160	700		3430 2,5 Barg	3450 4,2 Barg	3485 11 Barg

DN100, DN125, DN150 Body Material is PN16 Cast Iron.
Ask for Different Body Materials.

PNEUMATIC CONTROL VALVE

3 WAY PNEUMATIC PROPORTIONAL CONTROL VALVE - 33611



BASIC (STANDART) FEATURED:

- Body : GGG-40.3 Sfero Cast
- Pressure Class : PN25
- Function : Mixing - Diverting
- Sealing Class : CLASS VI (PTFE Soft Sealing)
- Characteristic : Proportional
- Neck Sealing : CLASS VI - V Packet
- Max. Working Temp. : 220°C
- Flange Connection : DIN 1092-2 (PN16)

Positioner not included.

ACCESSORIES:

- Ask for Limit Switch addition.
- Ask for Hand Control.



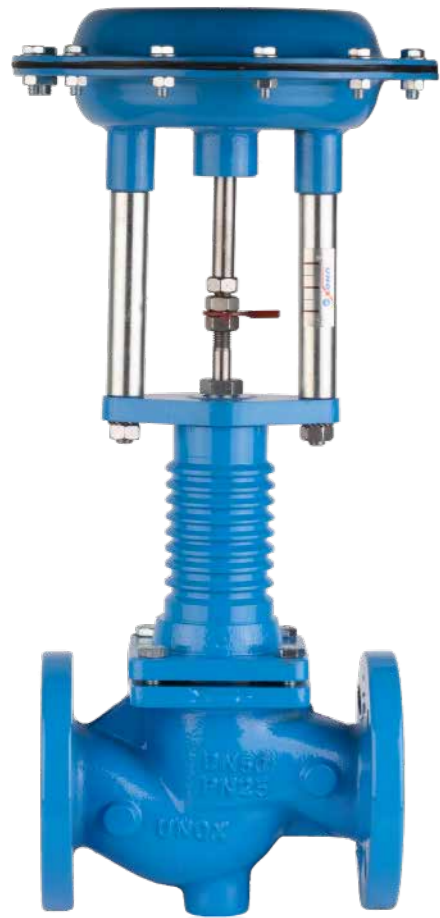
Signal Pressure(Bar)	0,2-1	0,4-2	0,6-3	1,4-2,3
Supply Air Pressure(Bar)	1,8	2,6	3,5	2,8

SIZE(DN)	KVS m ³ /h	Actuator cm ²	PRICE Euro € / Qty			
			0,2-1 1,8	0,4-2 2,6	0,6-3 3,5	1,4-2,3 2,8
15	4	240	1760 5,4 Barg	1780 14 Barg	1800 14 Barg	
20	6.3	240	1780 5,3 Barg	1790 14 Barg	1820 14 Barg	
25	10	240	1810 5,2 Barg	1820 14 Barg	1840 14 Barg	
32	16	240	2340 5,2 Barg	2360 8,5 Barg	2380 14 Barg	
40	30	240	2390 5 Barg	2400 5,5 Barg	2420 9 Barg	2440 9 Barg
		350	2470 3,3 Barg	2480 8 Barg	2490 14 Barg	2500 14 Barg
50	40	240	2500 2 Barg	2520 5 Barg	2530 6,4 Barg	2640 8 Barg
		350	2590 1,7 Barg	2600 5,2 Barg	2620 8,8 Barg	2680 14 Barg
65	60	350		2700 2,8 Barg	2730 4,8 Barg	2750 13 Barg
80	80	350	3280 1 Barg	3300 3 Barg	3320 3 Barg	3350 3 Barg
100	160	Piston Type		4300 2,5 Barg	4320 4,2 Barg	4360 11 Barg

DN100, DN125, DN150 Body Material is PN16 Cast Iron.
Ask for Different Body Materials.

PNEUMATIC CONTROL VALVE

2 WAY PNEUMATIC ON-OFF CONTROL VALVE FOR HOT OIL - 33612



BASIC (STANDART) FEATURED:

- Body : GGG-40.3 Sfero Cast
- Pressure Class : PN25
- Safety Function : Normally Closed - Normally Open
- Sealing Class : CLASS IV (Metal to Metal)
- Characteristic : On - Off
- Neck Sealing : CLASS VI - V Packet Metal Bellows additional
- Max. Working Temp. : 350°C
- Flange Connection : DIN 1092-2 (PN16)

ACCESSORIES:

- Ask for Limit Switch addition.
- Ask for Hand Control.



SIZE(DN)	KVS m ³ /h	Actuator cm ²	Delta P Barg	PRICE €
15	4	240	14	1185
20	6.3	240	14	1250
25	10	240	14	1280
32	16	240	12	1300
40	25	240	11	1375
50	35	240	10	1410
65	60	350	9	1550
80	80	350	10	1750
100	160	Piston Type	9.2	3100

DN100, DN125, DN150 Body Material is PN16 Cast Iron.
Ask for Different Body Materials.

PNEUMATIC CONTROL VALVE

3 WAY PNEUMATIC ON-OFF CONTROL VALVE FOR HOT OIL - 33613



BASIC (STANDART) FEATURED:

- Body : GGG-40.3 Sfero Cast
- Pressure Class : PN25
- Function : Mixing - Diverting
- Sealing Class : CLASS IV (Metal to Metal)
- Characteristic : On - Off
- Neck Sealing : CLASS VI - V Packet Metal Bellows additional
- Max. Working Temp. : 350°C
- Flange Connection : DIN 1092-2 (PN16)

ACCESSORIES:

- Ask for Limit Switch addition.
- Ask for Hand Control.



SIZE(DN)	KVS m ³ /h	Actuator cm ²	Delta P Barg	PRICE €
15	4	240	14	1620
20	6.3	240	14	1630
25	10	240	14	1660
32	16	240	12	2200
40	25	240	11	2380
50	35	240	10	2430
65	60	350	9	2530
80	80	350	10	3070
100	160	Piston Type	9.2	4680

DN100, DN125, DN150 Body Material is PN16 Cast Iron.
Ask for Different Body Materials.

PNEUMATIC CONTROL VALVE

2 WAY PNEUMATIC PROPORTIONAL CONTROL VALVE FOR HOT OIL - 33607



BASIC (STANDART) FEATURED:

- Body : GGG-40.3 Sfero Cast
- Pressure Class : PN25
- Safety Function : Normally Closed - Normally Open
- Sealing Class : CLASS IV (Metal to Metal)
- Characteristic : Proportional
- Neck Sealing : CLASS VI - V Packet Metal Bellows additional
- Max. Working Temp. : 350°C
- Flange Connection : DIN 1092-2 (PN16)

Positioner not included.

ACCESSORIES:

- Ask for Limit Switch addition.
- Ask for Hand Control.



SIZE(DN)	KVS m ³ /h	Actuator cm ²	PRICE Euro € / Qty			
			0,2-1 Supply Air Pressure(Bar)	0,4-2	0,6-3	1,4-2,3
15	4	240	1540 5,4 Barg	1560 14 Barg	1580 14 Barg	
20	6.3	240	1590 5,3 Barg	1630 14 Barg	1650 14 Barg	
25	10	240	1670 5,2 Barg	1700 14 Barg	1715 14 Barg	
32	16	240	1720 5,2 Barg	1730 8,5 Barg	1740 14 Barg	
40	30	240	1725 5 Barg	1760 5,5 Barg	1800 9 Barg	1835 9 Barg
		350	1855 3,3 Barg	1875 8 Barg	1890 14 Barg	1905 14 Barg
50	40	240	1880 2 Barg	1890 5 Barg	1900 6,4 Barg	1930 8 Barg
		350	1895 1,7 Barg	1925 5,2 Barg	2125 8,8 Barg	2140 14 Barg
65	60	350		2135 2,8 Barg	2155 4,8 Barg	2210 13 Barg
80	80	350	2210 1 Barg	2230 3 Barg	2240 3 Barg	2270 3 Barg
100	160	700		3790 2,5 Barg	3800 4,2 Barg	3870 11 Barg

DN100, DN125, DN150 Body Material is PN16 Cast Iron.
Ask for Different Body Materials.

PNEUMATIC CONTROL VALVE

3 WAY PNEUMATIC PROPORTIONAL CONTROL VALVE FOR HOT OIL - 33614



BASIC (STANDART) FEATURED:

- Body : GGG-40.3 Sfero Cast
- Pressure Class : PN25
- Function : Mixing - Diverting
- Sealing Class : CLASS IV (Metal to Metal)
- Characteristic : Proportional
- Neck Sealing : CLASS VI - V Packet Metal Bellows additional
- Max. Working Temp. : 350°C
- Flange Connection : DIN 1092-2 (PN16)

Positioner not included.

ACCESSORIES:

- Ask for Limit Switch addition.
- Ask for Hand Control.



SIZE(DN)	KVS m ³ /h	Actuator cm ²	PRICE Euro € / Qty			
			0,2-1 Supply Air Pressure(Bar)	0,4-2	0,6-3	1,4-2,3
15	4	240	2265 5,4 Barg	2305 14 Barg	2320 14 Barg	
20	6.3	240	2315 5,3 Barg	2330 14 Barg	2340 14 Barg	
25	10	240	2340 5,2 Barg	2350 14 Barg	2370 14 Barg	
32	16	240	3045 5,2 Barg	3055 8,5 Barg	3075 14 Barg	
40	30	240	3055 5 Barg	3075 5,5 Barg	3100 9 Barg	3125 9 Barg
		350	3110 3,3 Barg	3125 8 Barg	3145 14 Barg	3170 14 Barg
50	40	240	3155 2 Barg	3175 5 Barg	3185 6,4 Barg	3195 8 Barg
		350	3240 1,7 Barg	3270 5,2 Barg	3295 8,8 Barg	3335 14 Barg
65	60	350		3380 2,8 Barg	3410 4,8 Barg	3430 13 Barg
80	80	350	4305 1 Barg	4345 3 Barg	4390 3 Barg	4400 3 Barg
100	160	700		6050 2,5 Barg	6060 4,2 Barg	6080 11 Barg

DN100, DN125, DN150 Body Material is PN16 Cast Iron.
Ask for Different Body Materials.

MOTORIZED CONTROL VALVES

2 WAY MOTORIZED ON-OFF CONTROL VALVE - 33605



BASIC (STANDART) FEATURED:

Body	: GGG-40.3 Sfero Cast
Pressure Class	: PN25
Safety Function	: Normally Closed - Normally Open
Sealing Class	: CLASS VI (PTFE Soft Sealing)
Characteristic	: On - Off
Neck Sealing	: CLASS VI - V Packet
Max. Working Temp.	: 220°C
Flange Connection	: DIN 1092-2 (PN16)
Supply	: 220V AC / 24V DC
Protect Class	: IP54...67

Maintains its position when the power is cut off.

ACCESSORIES:

- Ask for Limit Switch addition.
- Ask for 0-1 Kohm potentiometer addition.
- Ask for 4-20mA - 0-10 V DC Proportional Control and Feedback signal.
- Ask for high ΔP's.
- Ask for High Temperature and Special Applications.



SIZE(DN)	KVS m ³ /h	ΔP (Bar)	Supply Voltage	Control Signal	PRICE €
15	4	14	220 V AC	ON-OFF	1760
20	6.3	14	220 V AC	ON-OFF	1810
25	10	14	220 V AC	ON-OFF	1840
32	16	14	220 V AC	ON-OFF	2340
40	30	14	220 V AC	ON-OFF	2420
50	40	13	220 V AC	ON-OFF	2495
65	60	11	220 V AC	ON-OFF	2890
80	80	6	220 V AC	ON-OFF	3570
100	160	7.5	220 V AC	ON-OFF	4700
125	200	5	220 V AC	ON-OFF	5860
150	260	3.8	220 V AC	ON-OFF	6435

DN100, DN125, DN150 Body Material is PN16 Cast Iron.
Ask for Different Body Materials.

MOTORIZED CONTROL VALVES

3 WAY MOTORIZED ON-OFF CONTROL VALVE - 33608



BASIC (STANDART) FEATURED:

Body	: GGG-40.3 Sfero Cast
Pressure Class	: PN25
Function	: Mixing - Diverting
Sealing Class	: CLASS VI (PTFE Soft Sealing)
Characteristic	: On - Off
Neck Sealing	: CLASS VI - V Packet
Max. Working Temp.	: 220°C
Flange Connection	: DIN 1092-2 (PN16)
Supply	: 220V AC / 24V DC
Protect Class	: IP54...67

Maintains its position when the power is cut off.

ACCESSORIES:

- Ask for Limit Switch addition.
- Ask for 0-1 Kohm potentiometer addition.
- Ask for 4-20mA - 0-10 V DC Proportional Control and Feedback signal.
- Ask for high ΔP's.
- Ask for High Temperature and Special Applications.



SIZE(DN)	KVS m ³ /h	ΔP (Bar)	Supply Voltage	Control Signal	PRICE €
15	4	14	220 V AC	ON-OFF	2885
20	6.3	14	220 V AC	ON-OFF	2935
25	10	14	220 V AC	ON-OFF	2965
32	16	14	220 V AC	ON-OFF	3275
40	30	14	220 V AC	ON-OFF	3355
50	40	13	220 V AC	ON-OFF	3435
65	60	11	220 V AC	ON-OFF	4315
80	80	6	220 V AC	ON-OFF	4480
100	160	7.5	220 V AC	ON-OFF	5460
125	200	5	220 V AC	ON-OFF	
150	260	3.8	220 V AC	ON-OFF	

ASK FOR PRICE

DN100, DN125, DN150 Body Material is PN16 Cast Iron.
Ask for Different Body Materials.

MOTORIZED CONTROL VALVES

2 WAY MOTORIZED PROPORTIONAL CONTROL VALVE - 33617



BASIC (STANDART) FEATURED:

Body	: GGG-40.3 Sfero Cast
Pressure Class	: PN25
Safety Function	: Normally Closed - Normally Open
Sealing Class	: CLASS VI (PTFE Soft Sealing)
Characteristic	: Proportional
Neck Sealing	: CLASS VI - V Packet
Max. Working Temp.	: 220°C
Flange Connection	: DIN 1092-2 (PN16)
Supply	: 220V AC / 24V DC
Protect Class	: IP54...67
Control Signal	: 4-20mA - 0-10 VDC
Feedback Signal	: 4-20mA - 0-10 VDC

Maintains its position when the power is cut off.

ACCESSORIES:

Ask for Limit Switch addition.
Ask for high ΔP's.
Ask for High Temperature and Special Applications.



4-20 mA / 0-10 V DC

SIZE(DN)	KVS m ³ /h	ΔP (Bar)	Supply Voltage	Control Signal	PRICE €
15	4	14	220 V AC	4-20 mA	1935
20	6.3	14	220 V AC	4-20 mA	1950
25	10	14	220 V AC	4-20 mA	1965
32	16	14	220 V AC	4-20 mA	2620
40	30	14	220 V AC	4-20 mA	2670
50	40	13	220 V AC	4-20 mA	2720
65	60	11	220 V AC	4-20 mA	3120
80	80	6	220 V AC	4-20 mA	4220
100	160	7.5	220 V AC	4-20 mA	5850
125	200	5	220 V AC	4-20 mA	6990
150	260	3.8	220 V AC	4-20 mA	7800

DN100, DN125, DN150 Body Material is PN16 Cast Iron.
Ask for Different Body Materials.

MOTORIZED CONTROL VALVES

3 WAY MOTORIZED PROPORTIONAL CONTROL VALVE - 33609



BASIC (STANDART) FEATURED:

Body	: GGG-40.3 Sfero Cast
Pressure Class	: PN25
Function	: Mixing - Diverting
Sealing Class	: CLASS VI (PTFE Soft Sealing)
Characteristic	: Proportional
Neck Sealing	: CLASS VI - V Packet
Max. Working Temp.	: 220°C
Flange Connection	: DIN 1092-2 (PN16)
Supply	: 220V AC / 24V DC
Protect Class	: IP54...67
Control Signal	: 4-20mA - 0-10 VDC
Feedback Signal	: 4-20mA - 0-10 VDC

Maintains its position when the power is cut off.

ACCESSORIES:

Ask for Limit Switch addition.
Ask for 0-1 Kohm potentiometer addition.
Ask for 4-20mA - 0-10 V DC Proportional Control and Feedback signal.
Ask for high ΔP's.
Ask for High Temperature and Special Applications.



4-20 mA / 0-10 V DC

SIZE(DN)	KVS m ³ /h	ΔP (Bar)	Supply Voltage	Control Signal	PRICE €
15	4	14	220 V AC	4-20 mA	2965
20	6.3	14	220 V AC	4-20 mA	3010
25	10	14	220 V AC	4-20 mA	3120
32	16	14	220 V AC	4-20 mA	3435
40	30	14	220 V AC	4-20 mA	3745
50	40	13	220 V AC	4-20 mA	3900
65	60	11	220 V AC	4-20 mA	4680
80	80	6	220 V AC	4-20 mA	5305
100	160	7.5	220 V AC	4-20 mA	6500
125	200	5	220 V AC	4-20 mA	
150	260	3.8	220 V AC	4-20 mA	

ASK FOR PRICE

DN100, DN125, DN150 Body Material is PN16 Cast Iron.
Ask for Different Body Materials.

MOTORIZED CONTROL VALVES

2 WAY MOTORIZED ON-OFF CONTROL VALVE FOR HOT OIL - 33615



BASIC (STANDART) FEATURED:

Body	: GGG-40.3 Sfero Cast
Pressure Class	: PN25
Safety Function	: Normally Closed - Normally Open
Sealing Class	: CLASS IV (Metal to Metal)
Characteristic	: On - Off
Neck Sealing	: CLASS VI - V Packet Metal Bellows additional
Max. Working Temp.	: 350°C
Flange Connection	: DIN 1092-2 (PN16)
Supply	: 220V AC / 24V DC
Protect Class	: IP54...67

Maintains its position when the power is cut off.

ACCESSORIES:

- Ask for Limit Switch addition.
- Ask for 0-1 Kohm potentiometer addition.
- Ask for 4-20mA - 0-10 V DC Proportional Control and Feedback signal.
- Ask for high ΔP's.
- Ask for High Temperature and Special Applications.
- Ask for different body materials.



SIZE(DN)	KVS m ³ /h	ΔP (Bar)	Supply Voltage	Control Signal	PRICE €
15	4	14	220 V AC	ON-OFF	2770
20	6.3	14	220 V AC	ON-OFF	2790
25	10	14	220 V AC	ON-OFF	2820
32	16	14	220 V AC	ON-OFF	3605
40	30	14	220 V AC	ON-OFF	3690
50	40	13	220 V AC	ON-OFF	3775
65	60	11	220 V AC	ON-OFF	4745
80	80	6	220 V AC	ON-OFF	4920
100	160	7.5	220 V AC	ON-OFF	6010
125	200	5	220 V AC	ON-OFF	ASK FOR PRICE
150	260	3.8	220 V AC	ON-OFF	ASK FOR PRICE

DN100, DN125, DN150 Body Material is PN16 Cast Iron.
Ask for Different Body Materials.

MOTORIZED CONTROL VALVES

3 WAY MOTORIZED ON-OFF CONTROL VALVE FOR HOT OIL - 33616



BASIC (STANDART) FEATURED:

Body	: GGG-40.3 Sfero Cast
Pressure Class	: PN25
Function	: Mixing - Diverting
Sealing Class	: CLASS IV (Metal to Metal)
Characteristic	: On - Off
Neck Sealing	: CLASS VI - V Packet Metal Bellows additional
Max. Working Temp.	: 350°C
Flange Connection	: DIN 1092-2 (PN16)
Supply	: 220V AC / 24V DC
Protect Class	: IP54...67

Maintains its position when the power is cut off.

ACCESSORIES:

- Ask for Limit Switch addition.
- Ask for 0-1 Kohm potentiometer addition.
- Ask for 4-20mA - 0-10 V DC Proportional Control and Feedback signal.
- Ask for high ΔP's.
- Ask for High Temperature and Special Applications.
- Ask for different body materials.



SIZE(DN)	KVS m ³ /h	ΔP (Bar)	Supply Voltage	Control Signal	PRICE €
15	4	14	220 V AC	ON-OFF	3175
20	6.3	14	220 V AC	ON-OFF	3230
25	10	14	220 V AC	ON-OFF	3260
32	16	14	220 V AC	ON-OFF	3750
40	30	14	220 V AC	ON-OFF	3770
50	40	13	220 V AC	ON-OFF	3885
65	60	11	220 V AC	ON-OFF	4465
80	80	6	220 V AC	ON-OFF	6025
100	160	7.5	220 V AC	ON-OFF	8505
125	200	5	220 V AC	ON-OFF	ASK FOR PRICE
150	260	3.8	220 V AC	ON-OFF	ASK FOR PRICE

DN100, DN125, DN150 Body Material is PN16 Cast Iron.
Ask for Different Body Materials.

MOTORIZED CONTROL VALVES

2 WAY MOTORIZED PROPORTIONAL CONTROL VALVE FOR HOT OIL - 33619



BASIC (STANDART) FEATURED:

Body	: GGG-40.3 Sfero Cast
Pressure Class	: PN25
Safety Function	: Normally Closed - Normally Open
Sealing Class	: CLASS IV (Metal to Metal)
Characteristic	: Proportional
Neck Sealing	: CLASS VI - V Packet Metal Bellows additional
Max. Working Temp.	: 350°C
Flange Connection	: DIN 1092-2 (PN16)
Supply	: 220V AC / 24V DC
Protect Class	: IP54...67

Maintains its position when the power is cut off.

ACCESSORIES:

Ask for Limit Switch addition.
Ask for high ΔP's.
Ask for High Temperature and Special Applications.
Ask for different body materials.



4-20 mA / 0-10 V DC

SIZE(DN)	KVS m ³ /h	ΔP (Bar)	Supply Voltage	Control Signal	PRICE €
15	4	14	220 V AC	4-20 mA	3090
20	6.3	14	220 V AC	4-20 mA	3185
25	10	14	220 V AC	4-20 mA	3370
32	16	14	220 V AC	4-20 mA	4680
40	30	14	220 V AC	4-20 mA	4870
50	40	13	220 V AC	4-20 mA	5245
65	60	11	220 V AC	4-20 mA	5620
80	80	6	220 V AC	4-20 mA	7490
100	160	7.5	220 V AC	4-20 mA	10860
125	200	5	220 V AC	4-20 mA	
150	260	3.8	220 V AC	4-20 mA	

ASK FOR PRICE

DN100, DN125, DN150 Body Material is PN16 Cast Iron.
Ask for Different Body Materials.

MOTORIZED CONTROL VALVES

3 WAY MOTORIZED PROPORTIONAL CONTROL VALVE FOR HOT OIL - 33618



BASIC (STANDART) FEATURED:

Body	: GGG-40.3 Sfero Cast
Pressure Class	: PN25
Function	: Mixing - Diverting
Sealing Class	: CLASS IV (Metal to Metal)
Characteristic	: Proportional
Neck Sealing	: CLASS VI - V Packet Metal Bellows additional
Max. Working Temp.	: 350°C
Flange Connection	: DIN 1092-2 (PN16)
Supply	: 220V AC / 24V DC
Protect Class	: IP54...67

Maintains its position when the power is cut off.

ACCESSORIES:

Ask for Limit Switch addition.
Ask for 0-1 Kohm potentiometer addition.
Ask for 4-20mA - 0-10 V DC Proportional Control and Feedback signal.
Ask for high ΔP's.
Ask for High Temperature and Special Applications.
Ask for different body materials.



4-20 mA / 0-10 V DC

SIZE(DN)	KVS m ³ /h	ΔP (Bar)	Supply Voltage	Control Signal	PRICE €
15	4	14	220 V AC	4-20 mA	3745
20	6.3	14	220 V AC	4-20 mA	3840
25	10	14	220 V AC	4-20 mA	4025
32	16	14	220 V AC	4-20 mA	4870
40	30	14	220 V AC	4-20 mA	5245
50	40	13	220 V AC	4-20 mA	5620
65	60	11	220 V AC	4-20 mA	6365
80	80	6	220 V AC	4-20 mA	8050
100	160	7.5	220 V AC	4-20 mA	12170
125	200	5	220 V AC	4-20 mA	
150	260	3.8	220 V AC	4-20 mA	

ASK FOR PRICE

DN100, DN125, DN150 Body Material is PN16 Cast Iron.
Ask for Different Body Materials.



SOLENOID VALVES



GENERAL PURPOSE SOLENOID VALVES

NORMALLY CLOSED

SIZE	MODEL	ORIFICE (mm)	PRESSURE	PRICE €
1/8"	GEM 1110	1	100 Bar	40
1/8"	GEM 1110	1,8	60 Bar	40
1/8"	GEM 1110	2,5	40 Bar	40
1/8"	GEM 1110	3	20 Bar	40
1/8"	GEM 1110	4	10 Bar	40
1/8"	GEM 1110	5	5 Bar	40
1/8"	GEM 1110	8	1 Bar	40
1/4"	GEM 1111	1	100 Bar	40
1/4"	GEM 1111	1,8	60 Bar	40
1/4"	GEM 1111	2,5	40 Bar	40
1/4"	GEM 1111	3	20 Bar	40
1/4"	GEM 1111	4	10 Bar	40
1/4"	GEM 1111	5	5 Bar	40
1/4"	GEM 1111	8	1 Bar	40
3/8"	GEM 1112	12	0.5-16 Bar	58
1/2"	GEM 1113	14	0.5-16 Bar	58
3/4"	GEM 1114	16	0.5-16 Bar	75
1"	GEM 1115	17	0.5-16 Bar	80
1 1/4"	GEM 1116	32	0.5-16 Bar	185
1 1/2"	GEM 1117	40	0.5-16 Bar	238
2"	GEM 1118	48	0.5-16 Bar	264



APPLICATION AREAS: Water, air and non-flammable gases.
NOTE: Ask for ex-proof applications.

Gasket : NBR
Tube : Stainless Steel
Body : Brass
Core : Stainless Steel
Temperature : -10 / +90 °C
Coil : Connection Socket

3/2 NORMALLY CLOSED

SIZE	MODEL	PRESSURE	PRICE €
1/8" - 3/2"	GEM 1119	0 - 10	44
1/4" - 3/2"	GEM 1120	0 - 10	44



HIGH PRESSURE NORMALLY CLOSED

SIZE	MODEL	PRESSURE	PRICE €
3/8"	GEM 1112 YB	0.5 - 40 BAR	77
1/2"	GEM 1113 YB	0.5 - 40 BAR	77
3/4"	GEM 1114 YB	0.5 - 40 BAR	84
1"	GEM 1115 YB	0.5 - 40 BAR	89

Gasket : PTFE / Viton
Tube : Stainless Steel
Body : Brass
Core : Stainless Steel
Temperature : -10 / +150 °C
Coil : Connection Socket



APPLICATION AREAS: Water, air and non-flammable gases.
NOTE: Ask for ex-proof applications.

GENERAL PURPOSE SOLENOID VALVES



STEAM SOLENOID VALVES

NORMALLY OPEN

SIZE	MODEL	PRESSURE	PRICE €
3/8"	GEM 1112 A	0.5-16	73
1/2"	GEM 1113 A	0.5-16	73
3/4"	GEM 1114 A	0.5-16	77
1"	GEM 1115 A	0.5-16	83
1 1/4"	GEM 1116 A	0.5-12	191
1 1/2"	GEM 1117 A	0.5-12	244
2"	GEM 1118 A	0.5-12	270



APPLICATION AREAS: Water, air and non-flammable gases.
NOTE: Ask for ex-proof applications.

- Gasket : NBR
- Tube : Brass
- Body : Brass
- Core : Stainless Steel
- Temperature : -10 / +90 °C
- Coil : Connection Socket

NORMALLY CLOSED

SIZE	MODEL	ORIFICE (mm)	PRESSURE	PRICE €
1/8"	BHR 1210	1	25 Bar	40
1/8"	BHR 1210	1,8	25 Bar	40
1/8"	BHR 1210	2,5	25 Bar	40
1/8"	BHR 1210	3	16 Bar	40
1/8"	BHR 1210	4	5 Bar	40
1/8"	BHR 1210	5	1 Bar	40
1/4"	BHR 1211	1	25 Bar	40
1/4"	BHR 1211	1,8	25 Bar	40
1/4"	BHR 1211	2,5	25 Bar	40
1/4"	BHR 1211	3	16 Bar	40
1/4"	BHR 1211	4	5 Bar	40
1/4"	BHR 1211	5	1 Bar	40
3/8"	BHR 1212	12	0.5-6	80
1/2"	BHR 1213	14	0.5-6	80
3/4"	BHR 1214	16	0.5-6	86
1"	BHR 1215	17	0.5-6	92
1 1/4"	BHR 1216	32	0.5-6	211
1 1/2"	BHR 1217	40	0.5-6	244
2"	BHR 1218	48	0.5-6	271



APPLICATION AREAS: Water, air and non-flammable gases.
NOTE: Ask for ex-proof applications.

- Gasket : PTFE / EPDM
- Tube : Stainless Steel
- Body : Brass
- Core : Stainless Steel
- Temperature : -10 / +180 °C
- Coil : Connection Socket

HIGH PRESSURE NORMALLY OPEN

SIZE	MODEL	PRESSURE	PRICE €
3/8"	GEM 1112 YB A	0.5-40	79
1/2"	GEM 1113 YB A	0.5-40	79
3/4"	GEM 1114 YB A	0.5-40	84
1"	GEM 1115 YB A	0.5-40	91



APPLICATION AREAS: Water, air and non-flammable gases.
NOTE: Ask for ex-proof applications.

- Gasket : PTFE / Viton
- Tube : Brass
- Body : Brass
- Core : Stainless Steel
- Temperature : -10 / +150 °C
- Coil : Connection Socket

NORMALLY OPEN

SIZE	MODEL	PRESSURE	PRICE €
3/8"	BHR 1212 A	0.5-6	83
1/2"	BHR 1213 A	0.5-6	83
3/4"	BHR 1214 A	0.5-6	89
1"	BHR 1215 A	0.5-6	97
1 1/4"	BHR 1216 A	0.5-6	215
1 1/2"	BHR 1217 A	0.5-6	248
2"	BHR 1218 A	0.5-6	274



APPLICATION AREAS: Water, air and non-flammable gases.
NOTE: Ask for ex-proof applications.

- Gasket : PTFE / EPDM
- Tube : Brass
- Body : Brass
- Core : Stainless Steel
- Temperature : -10 / +180 °C
- Coil : Connection Socket

COMPRESSOR SOLENOID VALVES



PISTON TYPE SOLENOID VALVES

NORMALLY CLOSED

SIZE	MODEL	ORIFICE (mm)	PRESSURE	PRICE €
1/8"	KOM 1500	1	100 Bar	40
1/8"	KOM 1500	1,8	60 Bar	40
1/8"	KOM 1500	2,5	40 Bar	40
1/8"	KOM 1500	3	20 Bar	40
1/8"	KOM 1500	4	10 Bar	40
1/8"	KOM 1500	5	5 Bar	40
1/8"	KOM 1500	8	1 Bar	40
1/4"	KOM 1501	1	100 Bar	40
1/4"	KOM 1501	1,8	60 Bar	40
1/4"	KOM 1501	2,5	40 Bar	40
1/4"	KOM 1501	3	20 Bar	40
1/4"	KOM 1501	4	10 Bar	40
1/4"	KOM 1501	5	5 Bar	40
1/4"	KOM 1501	8	1 Bar	40
3/8"	KOM 1502	12	0.5-16	80
1/2"	KOM 1503	14	0.5-16	80
3/4"	KOM 1504	16	0.5-16	88
1"	KOM 1505	17	0.5-16	96



APPLICATION AREAS: Water, air and non-flammable gases.
NOTE: Ask for ex-proof applications.

Gasket : Viton
Tube : Stainless Steel
Body : Brass
Core : Stainless Steel
Temperature : -10 / +150 °C
Coil : Connection Socket

NORMALLY CLOSED

SIZE	MODEL	PRESSURE	PRICE €
3/8"	PST 1313	0.5-10 Bar	88
1/2"	PST 1314	0.5-10 Bar	88

Gasket : EPDM / NBR / Viton
Tube : Stainless Steel
Body : Brass
Core : Stainless Steel 316
Temperature: -10 / +150 °C
Coil : Connection Socket
Coil : Stainless Steel AISI 316
Spring : Stainless Steel AISI 316



APPLICATION AREAS: Water, air and non-flammable gases.
NOTE: Ask for ex-proof applications.

3/2 NORMALLY CLOSED

SIZE	MODEL	PRESSURE	PRICE €
1/8" - 3/2"	KOM 1509	0-10 Bar	44
1/4" - 3/2"	KOM 1510	0-10 Bar	44



NORMALLY OPEN

SIZE	MODEL	PRESSURE	PRICE €
3/8"	KOM 1502 A	0.5-16	83
1/2"	KOM 1503 A	0.5-16	83
3/4"	KOM 1504 A	0.5-16	90
1"	KOM 1505 A	0.5-16	98



APPLICATION AREAS: Water, air and non-flammable gases.
NOTE: Ask for ex-proof applications.

NORMALLY OPEN

SIZE	MODEL	PRESSURE	PRICE €
3/8"	PST 1313 A	0.5-10 Bar	90
1/2"	PST 1314 A	0.5-10 Bar	90

Gasket : EPDM / NBR / Viton
Tube : Brass
Body : Brass
Core : Stainless Steel 316
Temperature: -10 / +150 °C
Coil : Connection Socket
Coil : Stainless Steel AISI 316
Spring : Stainless Steel AISI 316



APPLICATION AREAS: Water, air and non-flammable gases.
NOTE: Ask for ex-proof applications.

WEDGE BODY SOLENOID VALVES



BRASS WEDGE BODY NORMALLY CLOSED

SIZE	MODEL	ORIFICE (mm)	PRESSURE	PRICE €
1/8"	TKZ1110	1	100 Bar	36
1/8"	TKZ1110	1,8	60 Bar	36
1/8"	TKZ1110	2,5	40 Bar	36
1/8"	TKZ1110	3	20 Bar	36
1/8"	TKZ1110	4	10 Bar	36
1/8"	TKZ1110	5	5 Bar	36
1/8"	TKZ1110	8	1 Bar	36
1/4"	TKZ1111	1	100 Bar	36
1/4"	TKZ1111	1,8	60 Bar	36
1/4"	TKZ1111	2,5	40 Bar	36
1/4"	TKZ1111	3	20 Bar	36
1/4"	TKZ1111	4	10 Bar	36
1/4"	TKZ1111	5	5 Bar	36
1/4"	TKZ1111	8	1 Bar	36
3/8"	TKZ1112	1	100 Bar	43
3/8"	TKZ1112	1,8	60 Bar	43
3/8"	TKZ1112	2,5	40 Bar	43
3/8"	TKZ1112	3	20 Bar	43
3/8"	TKZ1112	4	10 Bar	43
3/8"	TKZ1112	5	5 Bar	43
3/8"	TKZ1112	8	1 Bar	43
1/2"	TKZ1113	1	100 Bar	43
1/2"	TKZ1113	1,8	60 Bar	43
1/2"	TKZ1113	2,5	40 Bar	43
1/2"	TKZ1113	3	20 Bar	43
1/2"	TKZ1113	4	10 Bar	43
1/2"	TKZ1113	5	5 Bar	43
1/2"	TKZ1113	8	1 Bar	43
3/4"	TKZ1114	1	100 Bar	45
3/4"	TKZ1114	1,8	60 Bar	45
3/4"	TKZ1114	2,5	40 Bar	45
3/4"	TKZ1114	3	20 Bar	45
3/4"	TKZ1114	4	10 Bar	45
3/4"	TKZ1114	5	5 Bar	45
3/4"	TKZ1114	8	1 Bar	45
1"	TKZ1115	1	100 Bar	57
1"	TKZ1115	1,8	60 Bar	57
1"	TKZ1115	2,5	40 Bar	57
1"	TKZ1115	3	20 Bar	57
1"	TKZ1115	4	10 Bar	57
1"	TKZ1115	5	5 Bar	57
1"	TKZ1115	8	1 Bar	57



APPLICATION AREAS: Water, air and non-flammable gases.
NOTE: Ask for ex-proof applications.

- Gasket : EPDM / NBR
- Tube : Stainless Steel
- Body : Brass
- Core : Stainless Steel 316
- Temperature : -10 / +130 °C
- Coil : Connection Socket
- Spring : Stainless Steel AISI 316



WEDGE BODY SOLENOID VALVES

STAINLESS STEEL WEDGE BODY NORMALLY CLOSED

SIZE	MODEL	ORIFICE (mm)	PRESSURE	PRICE €
1/8"	PSV 1600	1	100 Bar	68
1/8"	PSV 1600	1,8	60 Bar	68
1/8"	PSV 1600	2,5	40 Bar	68
1/8"	PSV 1600	3	20 Bar	68
1/8"	PSV 1600	4	10 Bar	68
1/8"	PSV 1600	5	5 Bar	68
1/8"	PSV 1600	8	1 Bar	68
1/4"	PSV 1601	1	100 Bar	68
1/4"	PSV 1601	1,8	60 Bar	68
1/4"	PSV 1601	2,5	40 Bar	68
1/4"	PSV 1601	3	20 Bar	68
1/4"	PSV 1601	4	10 Bar	68
1/4"	PSV 1601	5	5 Bar	68
1/4"	PSV 1601	8	1 Bar	68
3/8"	PSV 1602	1	100 Bar	78
3/8"	PSV 1602	1,8	60 Bar	78
3/8"	PSV 1602	2,5	40 Bar	78
3/8"	PSV 1602	3	20 Bar	78
3/8"	PSV 1602	4	10 Bar	78
3/8"	PSV 1602	5	5 Bar	78
3/8"	PSV 1602	8	1 Bar	78
1/2"	PSV 1603	1	100 Bar	78
1/2"	PSV 1603	1,8	60 Bar	78
1/2"	PSV 1603	2,5	40 Bar	78
1/2"	PSV 1603	3	20 Bar	78
1/2"	PSV 1603	4	10 Bar	78
1/2"	PSV 1603	5	5 Bar	78
1/2"	PSV 1603	8	1 Bar	78
3/4"	PSV 1604	1	100 Bar	86
3/4"	PSV 1604	1,8	60 Bar	86
3/4"	PSV 1604	2,5	40 Bar	86
3/4"	PSV 1604	3	20 Bar	86
3/4"	PSV 1604	4	10 Bar	86
3/4"	PSV 1604	5	5 Bar	86
3/4"	PSV 1604	8	1 Bar	86
1"	PSV 1605	1	100 Bar	95
1"	PSV 1605	1,8	60 Bar	95
1"	PSV 1605	2,5	40 Bar	95
1"	PSV 1605	3	20 Bar	95
1"	PSV 1605	4	10 Bar	95
1"	PSV 1605	5	5 Bar	95
1"	PSV 1605	8	1 Bar	95



APPLICATION AREAS: Water, air and non-flammable gases.
NOTE: Ask for ex-proof applications.

- Gasket : PTFE / Viton
- Tube : Stainless Steel
- Body : Stainless Steel
- Core : Stainless Steel AISI 316
- Temperature : -10 / +160 °C
- Coil : Connection Socket
- Spring : Stainless Steel AISI 316

FULL BORE GENERAL PURPOSE SOLENOID VALVES



NORMALLY CLOSED

SIZE	MODEL	ORIFICE (mm)	PRESSURE	PRICE €
3/4"	TGM 2004	20 mm	0.5-16 Bar	143
1"	TGM 2005	25 mm	0.5-16 Bar	172

Gasket : PTFE / Viton
 Tube : Brass
 Body : Brass
 Core : Stainless Steel
 Temperature : -10 / +90 °C
 Coil : Connection Socket



APPLICATION AREAS: Water, air and non-flammable gases.
 NOTE: Ask for ex-proof applications.

NORMALLY OPEN

SIZE	MODEL	ORIFICE (mm)	PRESSURE	PRICE €
3/4"	TGMA 2004	20 mm	0.5-16 Bar	157
1"	TGMA 2005	25 mm	0.5-16 Bar	186

Gasket : PTFE / Viton
 Tube : Brass
 Body : Brass
 Core : Stainless Steel
 Temperature : -10 / +90 °C
 Coil : Connection Socket



APPLICATION AREAS: Water, air and non-flammable gases.
 NOTE: Ask for ex-proof applications.

STAINLESS STEEL GENERAL PURPOSE SOLENOID VALVES



NORMALLY CLOSED

SIZE	MODEL	ORIFICE (mm)	PRESSURE	PRICE €
1/8"	IGM 1600	1	100 Bar	68
1/8"	IGM 1600	1,8	60 Bar	68
1/8"	IGM 1600	2,5	40 Bar	68
1/8"	IGM 1600	3	20 Bar	68
1/8"	IGM 1600	4	10 Bar	68
1/8"	IGM 1600	5	5 Bar	68
1/8"	IGM 1600	8	1 Bar	68
1/4"	IGM 1601	1	100 Bar	68
1/4"	IGM 1601	1,8	60 Bar	68
1/4"	IGM 1601	2,5	40 Bar	68
1/4"	IGM 1601	3	20 Bar	68
1/4"	IGM 1601	4	10 Bar	68
1/4"	IGM 1601	5	5 Bar	68
1/4"	IGM 1601	8	1 Bar	68
3/8"	IGM 1602	12	0.5-16 Bar	127
1/2"	IGM 1603	14	0.5-16 Bar	131
3/4"	IGM 1604	16	0.5-16 Bar	136
1"	IGM 1605	17	0.5-16 Bar	142



APPLICATION AREAS: Water, air and non-flammable gases.
 NOTE: Ask for ex-proof applications.

Gasket : NBR
 Tube : Stainless Steel
 Body : AISI 316 Stainless Steel
 Core : Stainless Steel
 Temperature: -10 / +90 °C
 Coil : Connection Socket

3/2 NORMALLY CLOSED

SIZE	MODEL	PRESSURE	PRICE €
1/8" - 3/2"	IGM 1609	0-10 Bar	84
1/4" - 3/2"	IGM 1610	0-10 Bar	84



HIGH PRESSURE NORMALLY CLOSED

SIZE	MODEL	PRESSURE	PRICE €
3/8"	IGM 1602 YB	0.5-40 Bar	133
1/2"	IGM 1603 YB	0.5-40 Bar	136
3/4"	IGM 1604 YB	0.5-40 Bar	141
1"	IGM 1605 YB	0.5-40 Bar	151

Gasket : PTFE / Viton
 Tube : Stainless Steel
 Body : AISI 316 Stainless Steel
 Core : Stainless Steel
 Temperature: -10 / +150 °C
 Coil : Connection Socket



APPLICATION AREAS: Water, air and non-flammable gases.
 NOTE: Ask for ex-proof applications.

STAINLESS STEEL SOLENOID VALVES FOR STEAM



NORMALLY CLOSED

SIZE	MODEL	ORIFICE (mm)	PRESSURE	PRICE €
1/8"	İBR 1700	1	100 Bar	68
1/8"	İBR 1700	1,8	60 Bar	68
1/8"	İBR 1700	2,5	40 Bar	68
1/8"	İBR 1700	3	20 Bar	68
1/8"	İBR 1700	4	10 Bar	68
1/8"	İBR 1700	5	5 Bar	68
1/8"	İBR 1700	8	1 Bar	68
1/4"	İBR 1701	1	100 Bar	68
1/4"	İBR 1701	1,8	60 Bar	68
1/4"	İBR 1701	2,5	40 Bar	68
1/4"	İBR 1701	3	20 Bar	68
1/4"	İBR 1701	4	10 Bar	68
1/4"	İBR 1701	5	5 Bar	68
1/4"	İBR 1701	8	1 Bar	68
3/8"	İBR 1702	12	0.5-6 Bar	141
1/2"	İBR 1703	14	0.5-6 Bar	141
3/4"	İBR 1704	16	0.5-6 Bar	141
1"	İBR 1705	17	0.5-6 Bar	151



APPLICATION AREAS: Water, air and non-flammable gases.
NOTE: Ask for ex-proof applications.

Gasket : PTFE / EPDM
Tube : Stainless Steel
Body : AISI 316 Stainless Steel
Core : Stainless Steel
Temperature: -10 / +180 °C
Coil : Connection Socket



NORMALLY OPEN

SIZE	MODEL	PRESSURE	PRICE €
3/8"	İBR 1702 A	0.5-6 Bar	151
1/2"	İBR 1703 A	0.5-6 Bar	151
3/4"	İBR 1704 A	0.5-6 Bar	172
1"	İBR 1705 A	0.5-6 Bar	184



APPLICATION AREAS: Water, air and non-flammable gases.
NOTE: Ask for ex-proof applications.

Gasket : PTFE / EPDM
Tube : Stainless Steel
Body : AISI 316 Stainless Steel
Core : Stainless Steel
Temperature: -10 / +180 °C
Coil : Connection Socket



STAINLESS STEEL COMPRESSOR SOLENOID VALVES



NORMALLY CLOSED

SIZE	MODEL	ORIFICE (mm)	PRESSURE	PRICE €
1/8"	IKM 1900	1	100 Bar	68
1/8"	IKM 1900	1,8	60 Bar	68
1/8"	IKM 1900	2,5	40 Bar	68
1/8"	IKM 1900	3	20 Bar	68
1/8"	IKM 1900	4	10 Bar	68
1/8"	IKM 1900	5	5 Bar	68
1/8"	IKM 1900	8	1 Bar	68
1/4"	IKM 1901	1	100 Bar	68
1/4"	IKM 1901	1,8	60 Bar	68
1/4"	IKM 1901	2,5	40 Bar	68
1/4"	IKM 1901	3	20 Bar	68
1/4"	IKM 1901	4	10 Bar	68
1/4"	IKM 1901	5	5 Bar	68
1/4"	IKM 1901	8	1 Bar	68
3/8"	IKM 1902	12	0.5-16 Bar	141
1/2"	IKM 1903	14	0.5-16 Bar	141
3/4"	IKM 1904	16	0.5-16 Bar	151
1"	IKM 1905	17	0.5-16 Bar	165



APPLICATION AREAS: Water, air and non-flammable gases.
NOTE: Ask for ex-proof applications.

Gasket : Viton
Tube : Stainless Steel
Body : AISI 316 Stainless Steel
Core : Stainless Steel
Temperature: -10 / +150 °C
Coil : Connection Socket



3/2 NORMALLY CLOSED

SIZE	MODEL	PRESSURE	PRICE €
1/8" - 3/2"	IKM 1909	0-10 Bar	84
1/4" - 3/2"	IKM 1910	0-10 Bar	84



HIGH PRESSURE NORMALLY CLOSED

SIZE	MODEL	PRESSURE	PRICE €
3/8"	IKM 1902 YB	0.5-40 Bar	151
1/2"	IKM 1903 YB	0.5-40 Bar	151
3/4"	IKM 1904 YB	0.5-40 Bar	165
1"	IKM 1905 YB	0.5-40 Bar	180

Gasket : Viton
Tube : Stainless Steel
Body : AISI 316 Stainless Steel
Core : Stainless Steel
Temperature: -10 / +150 °C
Coil : Connection Socket



APPLICATION AREAS: Water, air and non-flammable gases.
NOTE: Ask for ex-proof applications.



SOLENOID VALVES FOR FUEL



VACUUM SOLENOID VALVE

NORMALLY CLOSED

SIZE	MODEL	ORIFICE (mm)	PRESSURE	PRICE €
1/8"	YKT 1500	1	100 Bar	68
1/8"	YKT 1500	1,8	60 Bar	68
1/8"	YKT 1500	2,5	40 Bar	68
1/8"	YKT 1500	3	20 Bar	68
1/8"	YKT 1500	4	10 Bar	68
1/8"	YKT 1500	5	5 Bar	68
1/8"	YKT 1500	8	1 Bar	68
1/4"	YKT 1501	1	100 Bar	68
1/4"	YKT 1501	1,8	60 Bar	68
1/4"	YKT 1501	2,5	40 Bar	68
1/4"	YKT 1501	3	20 Bar	68
1/4"	YKT 1501	4	10 Bar	68
1/4"	YKT 1501	5	5 Bar	68
1/4"	YKT 1501	8	1 Bar	68
3/8"	YKT 1502	12	0.5-16 Bar	141
1/2"	YKT 1503	14	0.5-16 Bar	141
3/4"	YKT 1504	16	0.5-16 Bar	151
1"	YKT 1505	17	0.5-16 Bar	165



APPLICATION AREAS: Water, air and non-flammable gases.
NOTE: Ask for ex-proof applications.

- Gasket : Viton
- Tube : Stainless Steel
- Body : Brass
- Core : Stainless Steel
- Temperature : -10 / +150 °C
- Coil : Connection Socket

NORMALLY CLOSED

SIZE	MODEL	ORIFICE	PRESSURE	PRICE €
1/8"	VKM 1400	1	100 Bar	60
1/8"	VKM 1400	1,8	60 Bar	60
1/8"	VKM 1400	2,5	40 Bar	60
1/8"	VKM 1400	3	20 Bar	60
1/8"	VKM 1400	4	10 Bar	60
1/8"	VKM 1400	5	5 Bar	60
1/8"	VKM 1400	8	1 Bar	60
1/4"	VKM 1411	1	100 Bar	60
1/4"	VKM 1411	1,8	60 Bar	60
1/4"	VKM 1411	2,5	40 Bar	60
1/4"	VKM 1411	3	20 Bar	60
1/4"	VKM 1411	4	10 Bar	60
1/4"	VKM 1411	5	5 Bar	60
1/4"	VKM 1411	8	1 Bar	60
3/8"	VKM 1412	12	0.5-16 Bar	106
1/2"	VKM 1413	14	0.5-16 Bar	106
3/4"	VKM 1414	16	0.5-16 Bar	112
1"	VKM 1415	17	0.5-16 Bar	119
1 1/4"	VKM 1416	32	0.5-16 Bar	277
1 1/2"	VKM 1417	40	0.5-16 Bar	356
2"	VKM 1418	48	0.5-16 Bar	396



- Gasket : NBR
- Tube : Stainless Steel
- Body : Brass
- Core : Stainless Steel
- Temperature : -10 / +90 °C
- Coil : Connection Socket

NORMALLY OPEN

SIZE	MODEL	PRESSURE	PRICE €
3/8"	YKT 1512 A	0.5-16 Bar	151
1/2"	YKT 1513 A	0.5-16 Bar	151
3/4"	YKT 1514 A	0.5-16 Bar	165
1"	YKT 1515 A	0.5-16 Bar	184



APPLICATION AREAS: Water, air and non-flammable gases.
NOTE: Ask for ex-proof applications.

- Gasket : Viton
- Tube : Brass
- Body : Brass
- Core : Stainless Steel
- Temperature : -10 / +150 °C
- Coil : Connection Socket

NORMALLY OPEN

SIZE	MODEL	PRESSURE	PRICE €
3/8"	VKM 1412 A	0.5-16	109
1/2"	VKM 1413 A	0.5-16	109
3/4"	VKM 1414 A	0.5-16	115
1"	VKM 1415 A	0.5-16	124
1 1/4"	VKM 1416 A	0.5-12	287
1 1/2"	VKM 1417 A	0.5-12	366
2"	VKM 1418 A	0.5-12	406



- Gasket : NBR
- Tube : Brass
- Body : Brass
- Core : Stainless Steel
- Temperature : -10 / +90 °C
- Coil : Connection Socket

SOLENOID VALVES

AUTOMATIC DRAIN SOLENOID VALVE



SIZE	MODEL	PRICE €
1/2"	U-728A	65

APPLICATION AREAS: Water, air and non-flammable gases.
NOTE: Ask for ex-proof applications.

TIMER



PRODUCT CODE	PRICE €
1510002	27

APPLICATION AREAS: Water, air and non-flammable gases.
NOTE: Ask for ex-proof applications.

SOLENOID VALVES SPARE PARTS AND ACCESSORIES

SPARE PARTS AND ACCESSORIES

PRODUCT	PRICE €
CORE(GENERAL PURPOSE-STEAM)	16
CORE(3/2)	18
COIL(ROUND)	22
12-24-110VAC - VDC COIL(ROUND)	22
220 V COIL (WITH SOCKET)	22
12-24-110VAC -VDC COIL (WITH SOCKET)	22
GENERAL PURPOSE DIAPHRAGM (3/8"-1/2"-3/4"-1")	24
GENERAL PURPOSE DIAPHRAGM (1 1/4"-1 1/2"-2")	72
STEAM DIAPHRAGM (3/8"-1/2"-3/4"-1")	28
STEAM DIAPHRAGM DIAPHRAGM (1 1/4"-1 1/2"-2")	84
COMPRESSOR VALVE DIAPHRAGM	28
BRASS HIVE(N.C)	22
BRASS HIVE(3/2)	24
SOCKET	8
LIGHTED SOCKET	9
H.P DIAPHRAGM (3/8"-1/2"-3/4"-1")	27
STAINLESS STEEL HIVE (N.C)	29
STAINLESS STEEL HIVE (3/2)	33
EX-PROOF COIL (24-220 VAC-VDC)	160



HYDRAULIC CONTROL VALVES



PRESSURE REDUCING CONTROL VALVE

MODEL	SIZE	PRICE €
D-PRV	DN50 (2")	328
	DN65 (2 1/2")	353
	DN80 (3")	444
	DN100 (4")	470
	DN125 (5")	524
	DN150 (6")	920
	DN200 (8")	1473
	DN250 (10")	2879
	DN300 (12")	3659



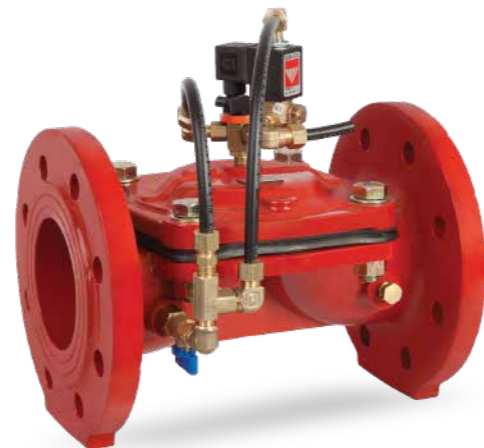
ELECTRIC CONTROLLED PRESSURE REDUCING VALVE

MODEL	SIZE	PRICE €
D-ECV	DN50 (2")	491
	DN65 (2 1/2")	516
	DN80 (3")	606
	DN100 (4")	631
	DN125 (5")	685
	DN150 (6")	1081
	DN200 (8")	1607
	DN250 (10")	3133
	DN300 (12")	3927



SOLENOID CONTROL VALVE

MODEL	SIZE	PRICE €
D-SCV	DN50 (2")	360
	DN65 (2 1/2")	384
	DN80 (3")	475
	DN100 (4")	501
	DN125 (5")	555
	DN150 (6")	967
	DN200 (8")	1636
	DN250 (10")	3055
	DN300 (12")	3832



DIAPHRAGM CLOSING HYDRAULIC CONTROL VALVES



PRESSURE RELIEF VALVE

MODEL	SIZE	PRICE €
D-QRV	DN50 (2")	349
	DN65 (2 1/2")	373
	DN80 (3")	463
	DN100 (4")	490
	DN125 (5")	543
	DN150 (6")	932
	DN200 (8")	1497
	DN250 (10")	3144
	DN300 (12")	4096



PRESSURE FIXING AND BREAKING CONTROL VALVE

MODEL	SIZE	PRICE €
D-PSV	DN50 (2")	336
	DN65 (2 1/2")	361
	DN80 (3")	452
	DN100 (4")	477
	DN125 (5")	531
	DN150 (6")	926
	DN200 (8")	1450
	DN250 (10")	2893
	DN300 (12")	3669



FLOW CONTROL VALVE

MODEL	SIZE	PRICE €
D-FRV	DN50 (2")	714
	DN65 (2 1/2")	746
	DN80 (3")	865
	DN100 (4")	898
	DN125 (5")	985
	DN150 (6")	1422
	DN200 (8")	2044
	DN250 (10")	3000
	DN300 (12")	3729



DIAPHRAGM CLOSING HYDRAULIC CONTROL VALVES



FLOAT LEVEL CONTROL VALVE

MODEL	SIZE	PRICE €
G-FRV	DN50 (2")	303
	DN65 (2 1/2")	326
	DN80 (3")	416
	DN100 (4")	444
	DN125 (5")	496
	DN150 (6")	889
	DN200 (8")	1407
	DN250 (10")	2746
DN300 (12")	3523	



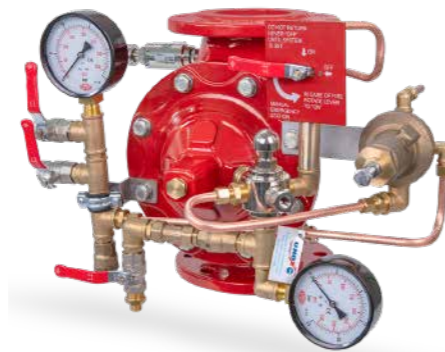
ELECTRIC FLOAT LEVEL CONTROL VALVE

MODEL	SIZE	PRICE €
D-EFLY	DN50 (2")	444
	DN65 (2 1/2")	468
	DN80 (3")	558
	DN100 (4")	586
	DN125 (5")	637
	DN150 (6")	1050
	DN200 (8")	1718
	DN250 (10")	3161
DN300 (12")	3936	



DRY TYPE DELUGE VALVE

MODEL	SIZE	PRICE €
D-PDV	DN50 (2")	ASK FOR PRICE
	DN65 (2 1/2")	ASK FOR PRICE
	DN80 (3")	ASK FOR PRICE
	DN100 (4")	ASK FOR PRICE
	DN125 (5")	ASK FOR PRICE
	DN200 (8")	ASK FOR PRICE



ELECTRIC TYPE DELUGE VALVE

MODEL	SIZE	PRICE €
D-EDV	DN50 (2")	1258
	DN65 (2 1/2")	1287
	DN80 (3")	1601
	DN100 (4")	1659
	DN125 (5")	1761
	DN200 (8")	2928



FIRE GROUP CONTROL VALVE

SUPERVISORY SWITCH BUTTERFLY VALVE

MODEL	SIZE	PRICE €
Y-130	DN50 (2")	172
	DN65 (2 1/2")	183
	DN80 (3")	194
	DN100 (4")	229
	DN125 (5")	332
	DN150 (6")	366
	DN200 (8")	503



RISING STEM GATE VALVES

MODEL	SIZE	PRICE €
Y-140	DN50 (2")	ASK FOR PRICE
	DN65 (2 1/2")	ASK FOR PRICE
	DN80 (3")	ASK FOR PRICE
	DN100 (4")	ASK FOR PRICE
	DN125 (5")	ASK FOR PRICE
	DN200 (8")	ASK FOR PRICE



FLOW SWITCHES

MODEL	SIZE	PRICE €
Y-150	DN50 (2")	ASK FOR PRICE
	DN65 (2 1/2")	ASK FOR PRICE
	DN80 (3")	ASK FOR PRICE
	DN100 (4")	ASK FOR PRICE
	DN125 (5")	ASK FOR PRICE
	DN200 (8")	ASK FOR PRICE





STAINLESS STEEL VALVE GROUP



AIR WATER STEAM

STAINLESS STEEL FLANGES

PN 10 / PN 16 AISI 304L, FLANGE

SIZE (DN)	MODEL	PRICE €
15	7100015	28
20	7100020	33
25	7100025	35
32	7100032	51
40	7100040	58
50	7100050	74
65	7100065	87
80	7100080	116
100	7100100	135
125	7100125	177
150	7100150	241
200	7100200	290



PN 10 / PN 16 AISI 304L, FLAT BLIND FLANGE

SIZE (DN)	MODEL	PRICE €
15	7110015	54
20	7110020	64
25	7110025	68
32	7110032	99
40	7110040	112
50	7110050	139
65	7110065	168
80	7110080	212
100	7110100	261
125	7110125	353
150	7110150	462
200	7110200	539



STAINLESS STEEL NEEDLE VALVE

SIZE(INC)	AISI304	
	MODEL	PRICE €
1/4"	261008	66
3/8"	261012	66
1/2"	261015	66
3/4"	261020	88
1	261025	138



BALL VALVE



2 PIECES STAINLESS STEEL BALL VALVE THREADED

AISI304			AISI316	
SIZE	MODEL	PRICE €	MODEL	PRICE €
1/2"	3320015	16	3330015	20
3/4"	3320020	22	3330020	27
1"	3320025	31	3330025	37
1 1/4"	3320032	48	3330032	60
1 1/2"	3320040	65	3330040	87
2"	3320050	83	3330050	120
2 1/2"	3320065	191	3330065	293
3"	3320080	280	3330080	407
4"	3320100	483	3330100	649



3 PIECES STAINLESS STEEL BALL VALVE THREADED

AISI304			AISI316	
SIZE	MODEL	PRICE €	MODEL	PRICE €
1/2"	3341015	29	3351015	36
3/4"	3341020	39	3351020	51
1"	3341025	54	3351025	67
1 1/4"	3341032	79	3351032	105
1 1/2"	3341040	97	3351040	143
2"	3341050	150	3351050	201
2 1/2"	3341065	356	3351065	550
3"	3341080	496	3351080	750
4"	3341100	763	3351100	1271



2 PIECES STAINLESS STEEL MOUNTING PAD BALL VALVE THREADED

AISI304			AISI316	
SIZE	MODEL	PRICE €	MODEL	PRICE €
1/2"	3310015	34	3311015	49
3/4"	3310020	45	3311020	64
1"	3310025	69	3311025	97
1 1/4"	3310032	92	3311032	117
1 1/2"	3310040	135	3311040	184
2"	3310050	181	3311050	229
2 1/2"	3310065	389		
3"	3310080	509		



BALL VALVE

2 PIECES STAINLESS STEEL MOUNTING PAD BALL VALVE FLANGED

AISI304			AISI316	
SIZE	MODEL	PRICE €	MODEL	PRICE €
DN15	3400015	133	3401015	173
DN20	3400020	158	3401020	219
DN25	3400025	178	3401025	242
DN32	3400032	247	3401032	356
DN40	3400040	356	3401040	483
DN50	3400050	448	3401050	585
DN65	3400065	623	3401065	788
DN80	3400080	687	3401080	954
DN100	3400100	966	3401100	1195
DN125	3400125	1754	3401125	2390
DN150	3400150	2186	3401150	2974
DN200	3400200	3559	3401200	4703



3 PIECES STAINLESS STEEL MOUNTING PAD BALL VALVE THREADED

AISI304			AISI316	
SIZE	MODEL	PRICE €	MODEL	PRICE €
1/2"	3340015	44	3350015	56
3/4"	3340020	49	3350020	68
1"	3340025	77	3350025	102
1 1/4"	3340032	96	3350032	138
1 1/2"	3340040	130	3350040	173
2"	3340050	189	3350050	242
2 1/2"	3340065	369	3350065	550
3"	3340080	496	3350080	750
4"	3340100	763	3350100	1271



3 PIECES STAINLESS STEEL MOUNTING PAD BALL VALVE FLANGED

AISI304			AISI316	
SIZE	MODEL	PRICE €	MODEL	PRICE €
DN15	3360015	128	3370015	166
DN20	3360020	166	3370020	222
DN25	3360025	209	3370025	280
DN32	3360032	293	3370032	394
DN40	3360040	356	3370040	458
DN50	3360050	478	3370050	605
DN65	3360065	700	3370065	839
DN80	3360080	916	3370080	1221
DN100	3360100	1208	3370100	1907



BALL VALVE



3 WAY L-PORT STAINLESS STEEL MOUNTING PAD BALL VALVE THREADED

AISI304			AISI316	
SIZE	MODEL	PRICE €	MODEL	PRICE €
1/2"	3380015	62	3381015	72
3/4"	3380020	84	3381020	92
1"	3380025	105	3381025	128
1 1/4"	3380032	173	3381032	222
1 1/2"	3380040	229	3381040	306
2"	3380050	293	3381050	394
2 1/2"	3380065	527	3381065	712
3"	3380080	1132	3381080	1526



3 WAY T-PORT STAINLESS STEEL MOUNTING PAD BALL VALVE THREADED

AISI304			AISI316	
SIZE	MODEL	PRICE €	MODEL	PRICE €
1/2"	3390015	68	3391015	79
3/4"	3390015	93	3391015	101
1"	3390015	115	3391015	140
1 1/4"	3390015	191	3391015	244
1 1/2"	3390015	252	3391015	336
2"	3390015	323	3391015	434
2 1/2"	3390015	580	3391015	783
3"	3390015	1246	3391015	1678



STAINLESS STEEL MONOBLOCK BALL VALVE

AISI304			AISI316	
SIZE	MODEL	PRICE €	MODEL	PRICE €
DN15	3410015	97	3411015	133
DN20	3410020	140	3411020	173
DN25	3410025	173	3411025	219
DN32	3410032	262	3411032	318
DN40	3410040	280	3411040	369
DN50	3410050	433	3411050	560
DN65	3410065	623	3411065	687
DN80	3410080	763	3411080	946
DN100	3410100	865	3411100	1119



CHECK VALVE/STRAINER



SWING CHECK VALVE

AISI304			AISI316	
SIZE	MODEL	PRICE €	MODEL	PRICE €
1/2"	2390015	22	2400015	28
3/4"	2390020	28	2400020	39
1"	2390025	37	2400025	49
1 1/4"	2390032	56	2400032	72
1 1/2"	2390040	72	2400040	97
2"	2390050	100	2400050	143
2 1/2"	2390065	255	2400065	356
3"	2390080	344	2400080	433
4"	2390100	738	2400100	-



Y TYPE STAINLESS STEEL STRAINER

AISI304			AISI316	
SIZE	MODEL	PRICE €	MODEL	PRICE €
1/2"	2480015	17	2490015	23
3/4"	2480020	25	2490020	31
1"	2480025	34	2490025	49
1 1/4"	2480032	49	2490032	62
1 1/2"	2480040	59	2490040	82
2"	2480050	93	2490050	143
2 1/2"	2480065	214	2490065	-
3"	2480080	306	2490080	-
4"	2480100	572	2490100	-



STAINLESS STEEL Y-TYPE STRAINER - FLANGED ANSI 150

AISI 304			AISI 316	
SIZE	MODEL	PRICE €	MODEL	PRICE €
DN25	2500025	229	2501025	311
DN32	2500032	293	2501032	420
DN40	2500040	331	2501040	448
DN50	2500050	394	2501050	534
DN65	2500065	585	2501065	788
DN80	2500080	712	2501080	966
DN100	2500100	814	2501100	1106
DN125	2500125	1322	2501125	1780
DN150	2500150	1805	2501150	2441
DN200	2500150	3000	2501200	3978



CHECK VALVE



WAFER TYPE CHECK VALVE

SIZE (DN)	PRICE €		
	2382 ST-37/304	2384 304/304	2385 316/316
25	43	97	164
32	48	101	167
40	51	107	177
50	54	114	201
65	67	154	264
80	75	181	301
100	101	267	438
125	147	418	628
150	206	578	768
200	310	918	1271
250	577	1835	2606
300	827	-	-



Gasket : EPDM
Max. Temperature : 130 °C



CHECK VALVE

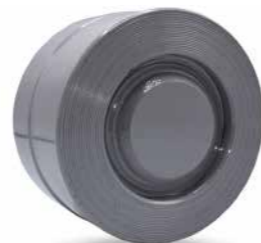
DUAL CHECK VALVE

SIZE	MODEL	IRON DISC		AISI316 DISC	
		PRICE €	MODEL	PRICE €	MODEL
DN40	2300040	69	2310040	74	
DN50	2300050	71	2310050	80	
DN65	2300065	81	2310065	95	
DN80	2300080	94	2310080	103	
DN100	2300100	109	2310100	137	
DN125	2300125	140	2310125	182	
DN150	2300150	176	2310150	239	
DN200	2300200	272	2310200	431	
DN250	2300250	453	2310250	762	
DN300	2300300	581	2310300	1016	
DN350	2300350	928	2310350	-	
DN400	2300400	1246	2310400	-	



DISCO CHECK VALVE

SIZE (DN)	STAINLESS STEEL DISCO CHECK VALVE		BRASS DISCO CHECK VALVE		SFERO CAST DISCO CHECK VALVE	
	MODEL	PRICE € AISI304 AISI316	MODEL	PRICE €	MODEL	PRICE €
15	2371015	31 39	2370015	27	2373040	34
20	2371020	36 51	2370020	29	2373050	42
25	2371025	46 59	2370025	35	2373065	62
32	2371032	49 69	2370032	52	2373080	73
40	2371040	69 84	2370040	56	2373100	98
50	2371050	95 115	2370050	75	2373125	183
65	2371065	140 171	2370065	102	2373150	228
80	2371080	191 229	2370080	128	2373200	294
100	2371100	255 318	2370100	179		
125	2371125	382 496				
150	2371150	547 687				
200	2371200	839 1017				



FLEXIBLE METAL HOSES

FLEXIBLE METAL HOSES



Hose : Stainless Steel
Braid : Stainless Steel
Fittings : ST37 Carbon Steel



BRAIDED HOSE SIZE	CODE	METER PRICE €	NIPPLE PRICE €	FITTING PRICE €	FIXED FLANGE PRICE €	ROTARY FLANGE PRICE €	MAX. WORK. PRESSURE BAR
1/2"	2810015	10,1	4,1	6	14,7	23	80
3/4"	2810020	16,3	4,8	8,6	15,9	24,5	70
1"	2810025	23,7	13,4	16,7	20,2	30	64
1 1/4"	2810032	33,5	18,7	19,8	30,8	40,9	40
1 1/2"	2810040	45,2	25,3	27,7	37,8	48,7	30
2"	2810050	53,8	52,6	54,5	55	63,6	28
2 1/2"	2810065	77,2			58,5	64,8	24
3"	2810080	83			60,5	78,4	18
4"	2810100	113,5			66,6	90,8	16

EXPANSION JOINTS



METAL BELLOWS FLANGED EXPANSION JOINT WITH LIMIT ROD

SIZE (DN)	30 MM WITH LAYNER	30 MM WITHOUT LAYNER
	MODEL UKM30LR PRICE €	MODEL UKM30 PRICE €
25	75	156
32	84	165
40	92	172
50	111	206
65	130	225
80	161	255
100	188	297
125	234	352
150	306	456
200	385	545
250	646	814



Bellows : Stainless Steel AISI 304
 Flange : ST37.2 Carbon Steel
 Limit Rots : ST37.2 Carbon Steel

Layner : Stainless Steel AISI 304
 Max. Working Pressure : 16 BAR
 Max. Working Temperature : -80 / +427 °C

RUBBER EXPANSION JOINT

SIZE (DN)	PRICE €	
	MODEL UKK-30	MODEL UKK-35
25	56	69
32	56	80
40	61	82
50	74	93
65	84	110
80	101	123
100	119	164
125	149	246
150	182	301
200	230	439
250	300	601
300	504	983



Sealing : EPDM
 Max. Working Pressure : 10 BAR
 Max. Working Temperature : 110 °C
 Flange Pressure Class : Stainless Steel AISI 304

UKK 30 Cast Iron Flanged, UKK35 Carbon Steel Flanged
 UKK 40 Threaded Connection.

EXPANSION JOINTS



304 STAINLESS STEEL FLANGED RUBBER EXPANSION JOINT

SIZE (DN)	PRICE €
25	72
32	94
40	106
50	112
65	132
80	156
100	190
125	220
150	300
200	468
250	632
300	1026



THREADED RUBBER EXPANSION JOINT

MODEL UKK-40	
SIZE	PRICE €
3/4"	30
1"	34
1 1/4"	42
1 1/2"	48
2"	59
2 1/2"	108
3"	143



EXPANSION JOINTS



METAL BELLOWS FLANGED EXPANSION JOINT

SIZE (DN)	30 MM WITH LAYNER	60 MM WITH LAYNER
	MODEL UKM 30DFL PRICE €	MODEL UKM 60DFL PRICE €
25	95	101
32	104	110
40	111	118
50	137	140
65	157	161
80	191	201
100	219	236
125	267	291
150	339	375
200	485	481
250	698	750



Bellows : Stainless Steel AISI 304
 Flange : ST37.2 Carbon Steel
 Layner : Stainless Steel AISI 304

Max. Working Pressure : 16 BAR
 Max. Working Temperature : -80 / +427 °C

EXTERNALLY PRESSURISED EXPANSION JOINTS

EXTERNALLY PRESSURISED FLANGED EXPANSION JOINT



Material: Stainless Steel
 Operating Temperature: -196 / +600 °C
 Connection: Threaded
 Pressure Class: PN16

METAL BELLOWS FLANGED EXPANSION JOINT

SIZE (DN)	30 MM WITH LAYNER	60 MM WITH LAYNER
	MODEL UKM 30DF PRICE €	MODEL UKM 60DF PRICE €
25	84	94
32	93	103
40	101	111
50	120	132
65	135	148
80	163	183
100	185	212
125	222	256
150	289	329
200	383	406
250	622	694



Bellows : Stainless Steel AISI 304
 Flange : ST37.2 Carbon Steel

Max. Working Pressure : 16 BAR
 Max. Working Temperature : -80 / +427 °C

30 mm Expansion(-20, +10)

60 mm Expansion(-40, +20)

90 mm Expansion(-70, +20)

SIZE (DN)	MODEL	PRICE €	SIZE (DN)	MODEL	PRICE €	SIZE (DN)	MODEL	PRICE €
25	UDBK-F0025	207	25	UDBK-F1025	261	25	UDBK-F2025	290
32	UDBK-F0032	218	32	UDBK-F1032	272	32	UDBK-F2032	302
40	UDBK-F0040	234	40	UDBK-F1040	290	40	UDBK-F2040	319
50	UDBK-F0050	269	50	UDBK-F1050	331	50	UDBK-F2050	361
65	UDBK-F0065	302	65	UDBK-F1065	350	65	UDBK-F2065	388
80	UDBK-F0080	367	80	UDBK-F1080	426	80	UDBK-F2080	467
100	UDBK-F0100	438	100	UDBK-F1100	505	100	UDBK-F2100	569
125	UDBK-F0125	553	125	UDBK-F1125	653	125	UDBK-F2125	738
150	UDBK-F0150	681	150	UDBK-F1150	792	150	UDBK-F2150	888
200	UDBK-F0200	874	200	UDBK-F1200	1009	200	UDBK-F2200	1102
250	UDBK-F0250	1261	250	UDBK-F1250	1443	250	UDBK-F2250	1622

EXTERNALLY PRESSURISED EXPANSION JOINTS

EXTERNALLY PRESSURISED WELDED NECK EXPANSION JOINT



Material: Stainless Steel
 Operating Temperature: -196 / +600 °C
 Connection: Threaded
 Pressure Class: PN16

30 mm Expansion(-20, +10)

60 mm Expansion(-40, +20)

90 mm Expansion(-70, +20)

SIZE (DN)	MODEL	PRICE €	SIZE (DN)	MODEL	PRICE €	SIZE (DN)	MODEL	PRICE €
25	UDBK-K0025	143	25	UDBK-K1025	179	25	UDBK-K2025	189
32	UDBK-K0032	145	32	UDBK-K1032	182	32	UDBK-K2032	193
40	UDBK-K0040	154	40	UDBK-K1040	191	40	UDBK-K2040	202
50	UDBK-K0050	169	50	UDBK-K1050	213	50	UDBK-K2050	225
65	UDBK-K0065	186	65	UDBK-K1065	225	65	UDBK-K2065	253
80	UDBK-K0080	229	80	UDBK-K1080	271	80	UDBK-K2080	308
100	UDBK-K0100	279	100	UDBK-K1100	337	100	UDBK-K2100	391
125	UDBK-K0125	357	125	UDBK-K1125	425	125	UDBK-K2125	495
150	UDBK-K0150	419	150	UDBK-K1150	520	150	UDBK-K2150	608
200	UDBK-K0200	559	200	UDBK-K1200	686	200	UDBK-K2200	774
250	UDBK-K0250	845	250	UDBK-K1250	925	250	UDBK-K2250	1074

EARTHQUAKE EXPANSION JOINTS

FLANGED EARTHQUAKE EXPANSION JOINT



X Direction: 100 mm (-50/+50 mm)
 Y Direction: 100 mm (-50/+50 mm)
 Z Direction: 100 mm (-50/+50 mm)

X Direction: 100 mm (-50/+50 mm)
 Y Direction: 200 mm (-100/+100 mm)
 Z Direction: 200 mm (-100/+100 mm)

SIZE (DN)	MODEL	PRICE €	SIZE (DN)	MODEL	PRICE €
25	UKMF-0025	252	25	UKMF-1025	265
32	UKMF-0032	261	32	UKMF-1032	273
40	UKMF-0040	270	40	UKMF-1040	283
50	UKMF-0050	318	50	UKMF-1050	335
65	UKMF-0065	371	65	UKMF-1065	389
80	UKMF-0080	412	80	UKMF-1080	432
100	UKMF-0100	493	100	UKMF-1100	517
125	UKMF-0125	698	125	UKMF-1125	732
150	UKMF-0150	826	150	UKMF-1150	867
200	UKMF-0200	1192	200	UKMF-1200	1252
250	UKMF-0250	1570	250	UKMF-1250	1648

X Direction: 100 mm (-50/+50 mm)
 Y Direction: 300 mm (-150/+150 mm)
 Z Direction: 300 mm (-150/+50 mm)

X Direction: 100 mm (-50/+50 mm)
 Y Direction: 400 mm (-200/+200 mm)
 Z Direction: 400 mm (-200/+200 mm)

SIZE (DN)	MODEL	PRICE €	SIZE (DN)	MODEL	PRICE €
25	UKMF-2025	278	25	UKMF-3025	290
32	UKMF-2032	287	32	UKMF-3032	300
40	UKMF-2040	296	40	UKMF-3040	311
50	UKMF-2050	350	50	UKMF-3050	367
65	UKMF-2065	408	65	UKMF-3065	426
80	UKMF-2080	453	80	UKMF-3080	473
100	UKMF-2100	542	100	UKMF-3100	566
125	UKMF-2125	762	125	UKMF-3125	802
150	UKMF-2150	908	150	UKMF-3150	950
200	UKMF-2200	1312	200	UKMF-3200	1371
250	UKMF-2250	1727	250	UKMF-3250	1805

EARTHQUAKE EXPANSION JOINTS

THREADED EARTHQUAKE EXPANSION JOINT



X Direction: 100 mm (-50/+50 mm)
Y Direction: 100 mm (-50/+50 mm)
Z Direction: 100 mm (-50/+50 mm)

X Direction: 100 mm (-50/+50 mm)
Y Direction: 200 mm (-100/+100 mm)
Z Direction: 200 mm (-100/+100 mm)

SIZE (DN)	MODEL	PRICE €	SIZE (DN)	MODEL	PRICE €
25	UKMK-0025	238	25	UKMK-1025	250
32	UKMK-0032	239	32	UKMK-1032	251
40	UKMK-0040	241	40	UKMK-1040	253
50	UKMK-0050	274	50	UKMK-1050	288
65	UKMK-0065	315	65	UKMK-1065	331
80	UKMK-0080	338	80	UKMK-1080	354
100	UKMK-0100	411	100	UKMK-1100	431
125	UKMK-0125	605	125	UKMK-1125	635
150	UKMK-0150	680	150	UKMK-1150	713
200	UKMK-0200	1036	200	UKMK-1200	1090
250	UKMK-0250	1220	250	UKMK-1250	1280

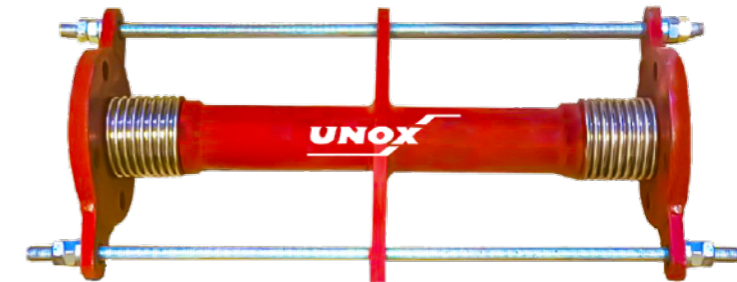
X Direction: 100 mm (-50/+50 mm)
Y Direction: 300 mm (-150/+150 mm)
Z Direction: 300 mm (-150/+50 mm)

X Direction: 100 mm (-50/+50 mm)
Y Direction: 400 mm (-200/+200 mm)
Z Direction: 400 mm (-200/+200 mm)

SIZE (DN)	MODEL	PRICE €	SIZE (DN)	MODEL	PRICE €
25	UKMK-2025	262	25	UKMK-3025	273
32	UKMK-2032	263	32	UKMK-3032	276
40	UKMK-2040	265	40	UKMK-3040	277
50	UKMK-2050	302	50	UKMK-3050	316
65	UKMK-2065	347	65	UKMK-3065	363
80	UKMK-2080	371	80	UKMK-3080	388
100	UKMK-2100	452	100	UKMK-3100	472
125	UKMK-2125	666	125	UKMK-3125	696
150	UKMK-2150	748	150	UKMK-3150	782
200	UKMK-2200	1139	200	UKMK-3200	1191
250	UKMK-2250	1342	250	UKMK-3250	1403

DILATATION EXPANSION JOINTS

FLANGED DILATATION EXPANSION JOINT WITH LIMIT ROD



Sideways ±25mm

Sideways ±50mm

SIZE (DN)	MODEL	PRICE €	SIZE (DN)	MODEL	PRICE €
25	UDKF-0025	186	25	UDKF-1025	189
32	UDKF-0032	194	32	UDKF-1032	197
40	UDKF-0040	202	40	UDKF-1040	205
50	UDKF-0050	230	50	UDKF-1050	235
65	UDKF-0065	274	65	UDKF-1065	280
80	UDKF-0080	313	80	UDKF-1080	321
100	UDKF-0100	372	100	UDKF-1100	385
125	UDKF-0125	447	125	UDKF-1125	476
150	UDKF-0150	576	150	UDKF-1150	611
200	UDKF-0200	729	200	UDKF-1200	774
250	UDKF-0250	1107	250	UDKF-1250	1177

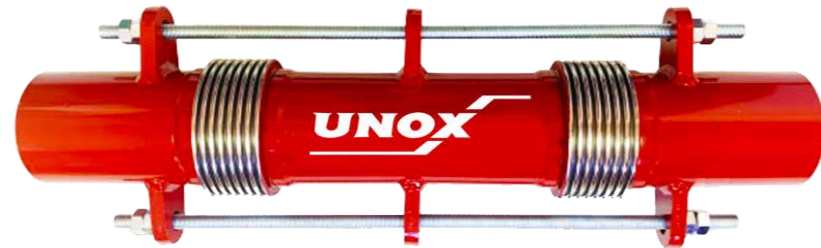
Sideways ±75mm

Sideways ±100mm

SIZE (DN)	MODEL	PRICE €	SIZE (DN)	MODEL	PRICE €
25	UDKF-2025	191	25	UDKF-3025	195
32	UDKF-2032	200	32	UDKF-3032	202
40	UDKF-2040	208	40	UDKF-3040	212
50	UDKF-2050	239	50	UDKF-3050	244
65	UDKF-2065	286	65	UDKF-3065	292
80	UDKF-2080	329	80	UDKF-3080	336
100	UDKF-2100	394	100	UDKF-3100	406
125	UDKF-2125	490	125	UDKF-3125	505
150	UDKF-2150	628	150	UDKF-3150	646
200	UDKF-2200	794	200	UDKF-3200	820
250	UDKF-2250	1209	250	UDKF-3250	1249

DILATATION EXPANSION JOINTS

WELDED NECK DILATATION EXPANSION JOINT WITH LIMIT ROD

Sideways $\pm 25\text{mm}$

SIZE (DN)	MODEL	PRICE €	SIZE (DN)	MODEL	PRICE €
25	UDKK-0025	153	25	UDKK-1025	156
32	UDKK-0032	154	32	UDKK-1032	157
40	UDKK-0040	156	40	UDKK-1040	159
50	UDKK-0050	169	50	UDKK-1050	174
65	UDKK-0065	207	65	UDKK-1065	212
80	UDKK-0080	231	80	UDKK-1080	238
100	UDKK-0100	289	100	UDKK-1100	300
125	UDKK-0125	348	125	UDKK-1125	377
150	UDKK-0150	430	150	UDKK-1150	465
200	UDKK-0200	527	200	UDKK-1200	572
250	UDKK-0250	751	250	UDKK-1250	822

Sideways $\pm 50\text{mm}$ Sideways $\pm 75\text{mm}$

SIZE (DN)	MODEL	PRICE €	SIZE (DN)	MODEL	PRICE €
25	UDKK-2025	159	25	UDKK-3025	161
32	UDKK-2032	160	32	UDKK-3032	162
40	UDKK-2040	162	40	UDKK-3040	165
50	UDKK-2050	179	50	UDKK-3050	183
65	UDKK-2065	218	65	UDKK-3065	224
80	UDKK-2080	245	80	UDKK-3080	252
100	UDKK-2100	310	100	UDKK-3100	321
125	UDKK-2125	391	125	UDKK-3125	406
150	UDKK-2150	483	150	UDKK-3150	500
200	UDKK-2200	593	200	UDKK-3200	618
250	UDKK-2250	855	250	UDKK-3250	894

Sideways $\pm 100\text{mm}$ 

FANTINI COSMI

VACUUM PRESSURE SWITCH

MODEL	BAR	PRICE €
B 12 AN	-0.82 - 0 BAR	208



ELECTROMECHANICAL SUBMERSIBLE LEVEL CONTROLS FOR OPEN TANKS

MODEL	PRICE €
A 95 A (3 m cable)	65
A 95 B (10 m cable)	85

Adjustable Distance : 750 mm
 Flange : 0.65 - 1.50 gr / cm²
 Cable Diameter : 10 mm
 Energy : 250 V AC - 50 Hz
 Max. Working Temperature: -25 / +60 °C
 Protection Class : IP67



PRESSURE SWITCHES

MODEL	BAR	PRICE €
B 12 BN	0.20 - 2 BAR	156
B 12 CN	0.20 - 8 BAR	111
B 12 DN	5 - 16 BAR	117
B 12 EN	8 - 28	143
B 12 FN	12 - 50 BAR	169
B 12 GN	25 - 150 BAR	182
B 12 HN	60 - 300 BAR	195
B 13 CN	1 - 10 BAR	143
B 01 A	0.7 - 3 BAR	52
B 01 B	2 - 5.5 BAR	52
B 01 C	3 - 7 BAR	52
B 01 D	4 - 15 BAR	52



ELECTROMECHANICAL FLOAT SWITCH FOR THREE-PHASE MOTOR CONTROL

MODEL	PRICE €
A 70 (Open - Closed Wirehouses)	98



PRESSURE SWITCHES FOR THREE-PHASE MOTORS DIRECT CONTROL

MODEL	BAR	PRICE €
B 70 A	0.5 - 7 BAR	72



HUMIDISTATS FOR WALL MOUNTING

MODEL	PRICE €
L 24 EM 2 DIGITAL	221
LS 160 A SENSOR	481



ELECTRONIC ROOM HUMIDISTAT

MODEL	PRICE €
D 40	221



ELECTRONIC LEVEL CONTROLS WITH PROBES FOR CONDUCTIVE LIQUIDS

MODEL	PRICE €
A 03 M (Automatic)	169
A 04 M (Manuel)	195

Working Temperature : -10 / +50 °C
 Protection Class : IP20
 Energy : 230 V



THE LEVEL DIFFERENCE IS ADJUSTED BY THE LENGTH OF THE ELECTRODES.

LIQUID SURVEY ELECTRODE HOLDERS PROBE FOR ELECTRONIC LEVEL CONTROLS

MODEL	PRICE €
EA 18	52
EA 20	104
EA 21	117

EA18 Probe Holder : Stainless Steel AISI 303
 Max. Working Pressure : IP20
 Max. Working Temp. : 160 °C
 Connection : 3/8" Nipple
 EA20 Probe Holder : Stainless Steel AISI 303
 Max. Working Pressure : 35 BAR
 Max. Working Temp. : 250 °C
 Connection : 3/8" Nipple
 EA21 Probe Holder : Stainless Steel AISI 316 PVC Coated 6 m Cable Resistive Probe
 Max. Working Temp. : 160 °C



ELECTROMECHANICAL ROOM THERMOSTATS WITH VAPOR EXPANSION

MODEL		PRICE €
C 16	10-30°C ON-OFF SENSITIVITY 1° IP20	33
C 16 IL	10-30°C LIGHT ON-OFF SENSITIVITY 1° IP20	52
C 60	6-30°C SENSITIVITY 0.5°C IP20	85
C 61	6-30°C SENSITIVITY 0.5°C 3 SPEED 2 POSITION FAN COIL IP20	98
CH 110	2-40°C HEATING DIFF 2 - 40°C COOLING DIGITAL 0.7°C	104



LEVEL CONTROLLER



COMPATIBLE WITH TSEK 2270 STANDARD.

MODEL	PRICE €
A-1	380
A-2	433
A-2F	471

Body : GGG40.3 Sfero Cast
 Float : Stainless Steel AISI 316
 Shaft : Stainless Steel AISI 316
 Bellows : Stainless Steel AISI 316
 Connection : A-1 / A-2 1 BSPTB Threaded A-2F DN25 Flanged
 Pressure : PN16

GENERAL CONDITIONS SALE

- 1- We are not obligated to provide service and service to the products purchased other than our authorized dealers.
- 2-For products with prices in USD and EURO in our general price list, the CBRT foreign currency exchange rate on the invoice date Based on the sales rate, the invoice will be issued in Turkish Lira and the payment will be made in Turkish Lira.
- 3- Our prices do not include VAT.
- 4-Prices given for special projects are given considering the quantities in the offer. Even if it is a continuation, the prices given for individual purchases are not valid.
- 5-We are not obliged to provide service and service to products that do not have an invoice or a waybill.
- 6-Invoices that are not paid as agreed and on time interest rate is accrued.
- 7-Bought from our authorized dealers and selection, assembly etc. correct made products invoice issued It is under our warranty for 24 months against defects in material and workmanship starting from the date of.
- 8-In order for our shipped products to be returned to our company later, the boxes must be in their original packages. It must be unopened. It is not possible to return products that have been opened or connected to the installation.
- 9-In case of returning the standard products sold, 20% deduction from the return amount will be done. (Return shipping belongs to the user.)
- 10- Since the products ordered for special projects are specially manufactured for our customers, Our customers cannot avoid receiving the product, it cannot be returned or exchanged.
- 11-Return period is maximum 7 days from the invoice date.
- 12- In product replacement transactions, if the subject product is included in our general price list and its box or if the original package is not opened, it can be replaced with another product.
- 13- In order to cancel confirmed orders, a written statement must be made within the same day.
- 14-The place of delivery of the products is our company's Kocaeli central warehouse address. Delivery to address, courier or express. This price will be invoiced when delivery is requested.
- 15- In your orders to our company, the type of product ordered, the type of fluid used, pressure, temperature, density, etc. All information must be provided completely and accurately. Our company is not responsible for the problems that may occur.
- 16- In cases where the delivery time is determined by a written contract made at the order stage and not confirmed by our company, our company delivers as soon as possible. In cases where the delivery time is not confirmed by the written contract, our company does not pay any delay penalty.
- 17- When legal resolution of disputes is required, Istanbul courts are authorized.
- 18-Our company reserves the right to make price changes without notice. It does not accept responsibility for any printing and typographical errors.

AFTER SALES SERVICES AND GENERAL WARRANTY CONDITIONS

General Information,

The products in our sales program are under the guarantee of our company.

- 1-The warranty period is 24 months from the invoice date. Usage errors are not covered by the warranty.
- 2-Along with the product sent for malfunction or maintenance; place of use, connection type, type of fluid used, pressure, temperature, density, etc. all information is complete, as well as the user's transportation address information. must come.
- 3-Whether the product's defect is covered by the warranty is determined by the tests to be carried out. During this period, the product a new one cannot be given. If the customer wishes, he can buy and install a new one, and as a result of the test, it is decided that the product is under warranty. If given, the customer will be refunded.

Situations Out of Warranty Coverage;

- 1-Procured from persons and organizations whose origin is unknown, do not have an invoice or are not authorized by our company products.
- 2-Products whose invoice is not submitted.
- 3-Damages and malfunctions caused by non-purpose use.
- 4- Damages and malfunctions caused by incorrect assembly, incorrect and incomplete installation.
- 5-Damages and malfunctions caused by transportation, shaking, storage, physical impacts, chemical factors and environmental conditions.
- 6-Damages and malfunctions caused by fire, lightning, flood, earthquake, freezing and other disasters.
- 7-Damages and malfunctions caused by fluid pollution.





Factory: Gebze Plastikçiler OSB
Cumhuriyet Cad. No: 67 Gebze/Kocaeli, Türkiye
Tel: 0262 502 11 48
Fax: 0262 502 11 52
E-mail: info@unox.com.tr

Export:
Gsm: +90 501 334 53 36
E-mail: export@unox.com.tr



unox.com.tr

unoxvalve

