

PRICE LIST 2026

**BUTTERFLY VALVES
PNEUMATIC ACTUATORS
ELECTRIC ACTUATORS
ACTUATED VALVES
STEAM TRAPS
PNEUMATIC CONTROL VALVES
ELECTRIC CONTROL VALVES
SOLENOID VALVES
STAINLESS STEEL PRODUCTS
FANTINI COSMI PRODUCTS**





7 CONTINENT

2026

50 IN MORE THAN 50 COUNTRIES
YOUR SOLUTION PARTNER

PRICE LIST



UNOX started its activities in Imes Industrial Zone in 1992 and continues to offer customer-oriented, quality and correct product service together. Since the first day we started manufacturing, we have gained serious experience in many products, especially solenoid valves and actuators, with our devoted work, and we are working to provide the best service to our customers by adding steam trap and control valves to our production capabilities. We continue to be a reliable solution partner for our customers in many parts of the world, with complementary product groups in changing and developing market conditions, for industrial installation users.

UNOX is also the representative in Turkey of Fantini Cosmi, an Italian company that has developed expertise in many fields from pressure control to flow and level temperature control, from civil automation to air conditioning, ventilation and even air treatment.

Our company with high production capacity; With its expert technical and administrative staff, it strives to add value to its country with all its might and offers its customers sustainable, long-lasting products that require low maintenance costs.



34
YEARS
OF
EXPERIENCE



50+
EMPLOYEE



70+
COUNTRY





APPLICATIONS WE PROVIDE SOLUTIONS FOR INDUSTRIES WE SERVE

 OIL	 AIR	 GAS	 WATER	 STEAM	 FUEL	 PETROLEUM	 FOOD	 IRON AND STEEL	 ENERGY	 CHEMICAL	 HEALTH	 TEXTILE
 ON-OFF	 OILY WATER	 PROPORTIONAL	 VACUUM	 CNG	 HOT WATER	 ZERO DIFFERENTIAL PRESSURE	 PLASTIC	 COMPRESSOR	 POOL	 SMART HOUSE	 PURIFICATION	 PAINT INDUSTRY
 LOW PRESSURE	 HIGH PRESSURE	 HOT OIL	 -50°C WORKING	 AGGRESSIVE CHEMICALS	 NORMALLY OPEN	 NORMALLY CLOSE	 PETRO CHEMISTRY	 PETROLEUM AND GAS	 CEMENT AND CONCRETE LIME	 HEATING COOLING	 FILLING SYSTEMS	 NATURAL GAS AND LPG
 OILY AIR	 COMBUSTIBLE	 ENERGY SAVING	 HIGH TEMPERATURE	 CHEMICAL WARFARE	 MACHINERY MANUFACTURERS	 FILTER AND DUST COLLECTION	 IRRIGATION SYSTEMS					



12

BUTTERFLY VALVES

EPDM SEATED BUTTERFLY VALVES	12-13
TEFLON SEATED BUTTERFLY VALVES	14-15
VITON SEATED BUTTERFLY VALVES	16-17
NBR SEATED BUTTERFLY VALVES	18-21
AL-BR BUTTERFLY VALVES	20-21
KNIFE GATE VALVES	22-23
GATE VALVES	24
DISMANTLING AND MANUEL CONTROL BUTTERFLY VALVE	25
GLOBE VALVES	26
CHECK VALVES / STRAINERS	27
CAST IRON BALL VALVES	28-29

30

PNEUMATIC AND ELECTRIC ACTUATORS

PNEUMATIC ACTUATORS	31-32
EXPROOF PNEUMATIC ACTUATORS	33
ELECTRIC ACTUATORS	34-36



37

ACTUATED VALVES

PNEUMATIC ACTUATED U-PVC VALVES	38-40
ELECTRIC ACTUATED U-PVC VALVES	41-43
PNEUMATIC ACTUATED VALVES	44-48
ELECTRIC ACTUATED VALVES	49-53
STAINLESS STEEL BUTTERFLY VALVE	54
PNEUMATIC ACTUATOR ACCESSORIES	55
VALVE-ACTUATOR CONNECTION PARTS	56

57

STEAM TRAPS

STEAM TRAPS	58-62
SAFETY VALVES	63
STEAM TRAP SPARE PART AND ACCESSORIES	64
LEVEL AND FLOW	65-68
FLASH STEAM GAINING SYSTEMS	69-70
PID CONTROL SYSTEMS	71-72
PNEUMATIC PISTON VALVES	73





92

SOLENOID VALVES

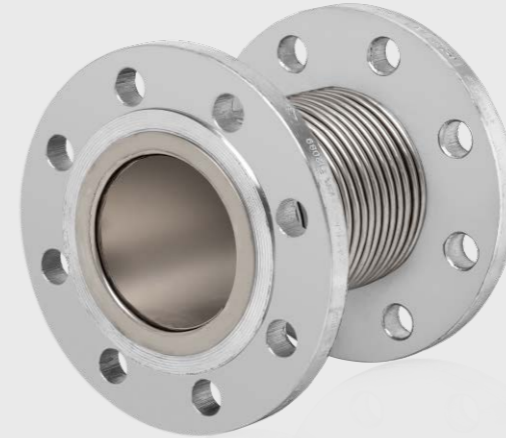
GENERAL PURPOSE SOLENOID VALVES	93-94
STEAM SOLENOID VALVES	95
COMPRESSOR SOLENOID VALVES	96
PISTON TYPE SOLENOID VALVES	97
WEDGE BODY SOLENOID VALVES	98-99
FULL BORE GENERAL PURPOSE SOLENOID VALVES	100
STAINLESS STEEL GENERAL PURPOSE SOLENOID VALVES	101
STAINLESS STEEL STEAM SOLENOID VALVES	102
STAINLESS STEEL COMPRESSOR SOLENOID VALVES	103
FUEL SOLENOID VALVES	104
VACUUM SOLENOID VALVES	105
SOLENOID VALVES SPARE PARTS AND ACCESSORIES	106-107
HYDRAULIC CONTROL VALVES	108-110
FIRE GROUP CONTROL VALVES	111



74

CONTROL VALVES

PNEUMATIC CONTROL VALVES	75-83
MOTORIZED CONTROL VALVES	84-91



112

STAINLESS STEEL PRODUCTS

STAINLESS STEEL FLANGES	113
STAINLESS STEEL BALL VALVES	114-116
CHECK VALVES / STRAINERS	117-118
FLEXIBLE METAL HOSES	119
EXPANSION JOINTS	120-128

129

FANTINI COSMI

VACUUM PRESSURE SWITCH	130
PRESSURE SWITCH	130
LEVEL CONTROL AND PANELS	131-132
HUMIDSTATS	133
LEVEL CONTROLLER	133



BUTTERFLY VALVES



EPDM SEATED IRON DISC WAFER TYPE BUTTERFLY VALVE



SIZE	MODEL		PRICE €
	UKLB-07		
DN40	070040		73
DN50	070050		76
DN65	070065		82
DN80	070080		92
DN100	070100		125
DN125	070125		157
DN150	070150		186
DN200	070200		329
DN250	070250		488
DN300	070300		624

Body : GGG-40 Cast Iron
 Disc : GGG40.3 Nickel Plated Cast Iron
 Shaft : AISI420 Stainless Steel
 Seat : EPDM
 Max. Working Temp. : 120°C
 Working Pressure : PN16 (DN25-DN300)
 Paint : Electro Static Powder Paint
 Connection : Wafer Type ISO 7005-1 EN 1092-1



BUTTERFLY VALVES

EPDM SEATED IRON DISC LUG TYPE BUTTERFLY VALVE



SIZE	MODEL		PRICE €
	UKLB-08		
DN40	080040		92
DN50	080050		96
DN65	080065		103
DN80	080080		125
DN100	080100		163
DN125	080125		199
DN150	080150		239
DN200	080200		430
DN250	080250		670
DN300	080300		809

Body : GGG-40 Cast Iron
 Disc : GGG40.3 Nickel Plated Cast Iron
 Shaft : AISI420 Stainless Steel
 Seat : EPDM
 Max. Working Temp. : 120°C
 Working Pressure : PN16 (DN25-DN300)
 Paint : Electro Static Powder Paint
 Connection : Lug Type TS EN 1092-2

EPDM SEATED STAINLESS STEEL DISC WAFER TYPE BUTTERFLY VALVE



SIZE	MODEL		PRICE €	
	UKLB-05	AISI304	AISI316	
DN40	050040	76	90	
DN50	050050	80	93	
DN65	050065	88	109	
DN80	050080	98	119	
DN100	050100	150	186	
DN125	050125	210	252	
DN150	050150	261	326	
DN200	050200	458	571	
DN250	050250	730	896	
DN300	050300	1048	1380	

Body : GGG-40 Cast Iron
 Disc : AISI304 Stainless Steel
 Shaft : AISI420 Stainless Steel
 Seat : EPDM
 Max. Working Temp. : 120°C
 Working Pressure : PN16 (DN25-DN300)
 Paint : Electro Static Powder Paint
 Connection : Wafer Type ISO 7005-1 EN 1092-1

EPDM SEATED STAINLESS STEEL DISC LUG TYPE BUTTERFLY VALVE



SIZE	MODEL		PRICE €	
	UKLB-06	AISI304	AISI316	
DN40	060040	93	111	
DN50	060050	97	113	
DN65	060065	119	133	
DN80	060080	153	155	
DN100	060100	190	228	
DN125	060125	259	310	
DN150	060150	312	391	
DN200	060200	602	740	
DN250	060250	922	1154	
DN300	060300	1287	1652	

Body : GGG-40 Cast Iron
 Disc : AISI304 Stainless Steel
 Shaft : AISI420 Stainless Steel
 Seat : EPDM
 Max. Working Temp. : 120°C
 Working Pressure : PN16 (DN25-DN300)
 Paint : Electro Static Powder Paint
 Connection : Lug Type TS EN 1092-2

BUTTERFLY VALVES



TEFLON SEATED AISI304 STAINLESS STEEL DISC WAFER TYPE BUTTERFLY VALVE



SIZE	MODEL	PRICE €
DN40	UKLB-11	192
DN50	110050	200
DN65	110065	223
DN80	110080	261
DN100	110100	407
DN125	110125	507
DN150	110150	645
DN200	110200	983
DN250	110250	1536
DN300	110300	2534

Seat : PTFE
 Disc : AISI304 Stainless Steel
 Shaft : AISI420 Stainless Steel
 Working Temperature : -20°C / +180°C
 Working Pressure : 0-16 Bar



TEFLON SEATED AISI304 STAINLESS STEEL DISC LUG TYPE BUTTERFLY VALVE



SIZE	MODEL	PRICE €
DN40	UKLB-09	207
DN50	090050	223
DN65	090065	253
DN80	090080	307
DN100	090100	445
DN125	090125	568
DN150	090150	699
DN200	090200	1144
DN250	090250	1751
DN300	090300	2826

Seat : PTFE
 Disc : AISI304 Stainless Steel
 Shaft : AISI420 Stainless Steel
 Working Temperature : -20°C / +180°C
 Working Pressure : 0-16 Bar

TEFLON SEATED AISI316 STAINLESS STEEL DISC WAFER TYPE BUTTERFLY VALVE



SIZE	MODEL	PRICE €
DN40	UKLB-12	207
DN50	120050	215
DN65	120065	246
DN80	120080	284
DN100	120100	445
DN125	120125	568
DN150	120150	722
DN200	120200	1106
DN250	120250	1720
DN300	120300	2918

Seat : PTFE
 Disc : AISI316 Stainless Steel
 Shaft : AISI420 Stainless Steel
 Working Temperature : -20°C / +180°C
 Working Pressure : 0-16 Bar

TEFLON SEATED AISI316 STAINLESS STEEL DISC LUG TYPE BUTTERFLY VALVE



SIZE	MODEL	PRICE €
DN40	UKLB-10	276
DN50	100050	299
DN65	100065	353
DN80	100080	415
DN100	100100	584
DN125	100125	729
DN150	100150	983
DN200	100200	1559
DN250	100250	2365
DN300	100300	3809

Seat : PTFE
 Disc : AISI316 Stainless Steel
 Shaft : AISI420 Stainless Steel
 Working Temperature : -20°C / +180°C
 Working Pressure : 0-16 Bar

BUTTERFLY VALVES



VITON SEATED AISI304 STAINLESS STEEL DISC WAFER TYPE BUTTERFLY VALVE



SIZE	MODEL	
	UKLB-15	PRICE €
DN40	150040	261
DN50	150050	292
DN65	150065	327
DN80	150080	369
DN100	150100	584
DN125	150125	753
DN150	150150	868
DN200	150200	1198
DN250	150250	2327
DN300	150300	3363

Seat : Viton
 Disc : AISI304 Stainless Steel
 Shaft : AISI420 Stainless Steel
 Working Temperature : +150°C
 Working Pressure : 0-16 Bar



VITON SEATED AISI304 STAINLESS STEEL DISC LUG TYPE BUTTERFLY VALVE



SIZE	MODEL	
	UKLB-17	PRICE €
DN40	170040	284
DN50	170050	315
DN65	170065	361
DN80	170080	422
DN100	170100	630
DN125	170125	806
DN150	170150	921
DN200	170200	1382
DN250	170250	2534
DN300	170300	3640

Seat : Viton
 Disc : AISI304 Stainless Steel
 Shaft : AISI420 Stainless Steel
 Working Temperature : +150°C
 Working Pressure : 0-16 Bar

VITON SEATED AISI316 STAINLESS STEEL DISC WAFER TYPE BUTTERFLY VALVE



SIZE	MODEL	
	UKLB-16	PRICE €
DN40	160040	292
DN50	160050	315
DN65	160065	346
DN80	160080	392
DN100	160100	630
DN125	160125	799
DN150	160150	944
DN200	160200	1351
DN250	160250	2519
DN300	160300	3747

Seat : Viton
 Disc : AISI316 Stainless Steel
 Shaft : AISI420 Stainless Steel
 Working Temperature : +150°C
 Working Pressure : 0-16 Bar

VITON SEATED AISI316 STAINLESS STEEL DISC LUG TYPE BUTTERFLY VALVE



SIZE	MODEL	
	UKLB-18	PRICE €
DN40	180040	307
DN50	180050	330
DN65	180065	376
DN80	180080	430
DN100	180100	676
DN125	180125	860
DN150	180150	1014
DN200	180200	1536
DN250	180250	2810
DN300	180300	4054

Seat : Viton
 Disc : AISI316 Stainless Steel
 Shaft : AISI420 Stainless Steel
 Working Temperature : +150°C
 Working Pressure : 0-16 Bar

BUTTERFLY VALVES



NBR SEATED IRON DISC WAFER TYPE BUTTERFLY VALVE



SIZE	MODEL	
	UKLB-19	PRICE €
DN40	190040	92
DN50	190050	101
DN65	190065	112
DN80	190080	126
DN100	190100	169
DN125	190125	221
DN150	190150	261
DN200	190200	455
DN250	190250	676
DN300	190300	906

Seat : NBR
 Disc : Iron Disc
 Shaft : AISI420 Stainless Steel
 Working Temperature : -10°C / +80°C
 Working Pressure : 0-16 Bar



BUTTERFLY VALVES

NBR SEATED IRON DISC LUG TYPE BUTTERFLY VALVE



SIZE	MODEL	
	UKLB-20	PRICE €
DN40	200040	115
DN50	200050	129
DN65	200065	146
DN80	200080	175
DN100	200100	227
DN125	200125	287
DN150	200150	330
DN200	200200	611
DN250	200250	937
DN300	200300	1210

Seat : NBR
 Disc : Iron Disc
 Shaft : AISI420 Stainless Steel
 Working Temperature : -10°C / +80°C
 Working Pressure : 0-16 Bar

NBR SEATED AISI304 STAINLESS STEEL DISC WAFER TYPE BUTTERFLY VALVE



SIZE	MODEL	
	UKLB-21	PRICE €
DN40	210040	101
DN50	210050	106
DN65	210065	120
DN80	210080	132
DN100	210100	204
DN125	210125	281
DN150	210150	350
DN200	210200	607
DN250	210250	968
DN300	210300	1405

Seat : NBR
 Disc : AISI304 Stainless Steel
 Shaft : AISI420 Stainless Steel
 Working Temperature : -10°C / +80°C
 Working Pressure : 0-16 Bar

NBR SEATED AISI304 STAINLESS STEEL DISC LUG TYPE BUTTERFLY VALVE



SIZE	MODEL	
	UKLB-23	PRICE €
DN40	230040	121
DN50	230050	127
DN65	230065	161
DN80	230080	200
DN100	230100	261
DN125	230125	361
DN150	230150	438
DN200	230200	822
DN250	230250	1267
DN300	230300	1812

Seat : NBR
 Disc : AISI304 Stainless Steel
 Shaft : AISI420 Stainless Steel
 Working Temperature : -10°C / +80°C
 Working Pressure : 0-16 Bar

BUTTERFLY VALVES



NBR SEATED AISI316 STAINLESS STEEL DISC WAFER TYPE BUTTERFLY VALVE



SIZE	MODEL	
	UKLB-22	PRICE €
DN40	220040	115
DN50	220050	123
DN65	220065	138
DN80	220080	157
DN100	220100	246
DN125	220125	330
DN150	220150	430
DN200	220200	737
DN250	220250	1167
DN300	220300	1781

Seat : NBR
 Disc : AISI316 Stainless Steel
 Shaft : AISI420 Stainless Steel
 Working Temperature : -10°C / +80°C
 Working Pressure : 0-16 Bar



NBR SEATED AISI316 STAINLESS STEEL DISC LUG TYPE BUTTERFLY VALVE



SIZE	MODEL	
	UKLB-24	PRICE €
DN40	240040	138
DN50	240050	158
DN65	240065	169
DN80	240080	200
DN100	240100	295
DN125	240125	399
DN150	240150	507
DN200	240200	929
DN250	240250	1459
DN300	240300	2104

Seat : NBR
 Disc : AISI316 Stainless Steel
 Shaft : AISI420 Stainless Steel
 Working Temperature : -10°C / +80°C
 Working Pressure : 0-16 Bar

EPDM SEATED ALUMINUM BRONZE DISC WAFER TYPE BUTTERFLY VALVE



SIZE	MODEL	
	UKLB-25	PRICE €
DN40	250040	143
DN50	250050	147
DN65	250065	177
DN80	250080	200
DN100	250100	346
DN125	250125	445
DN150	250150	619
DN200	250200	1090
DN250	250250	1904
DN300	250300	2826

Seat : EPDM
 Disc : Aluminum Bronze
 Shaft : AISI420 Stainless Steel
 Working Temperature : +110°C
 Working Pressure : 0-16 Bar

EPDM SEATED ALUMINUM BRONZE DISC LUG TYPE BUTTERFLY VALVE



SIZE	MODEL	
	UKLB-26	PRICE €
DN40	260040	161
DN50	260050	169
DN65	260065	215
DN80	260080	276
DN100	260100	445
DN125	260125	576
DN150	260150	760
DN200	260200	1259
DN250	260250	2165
DN300	260300	3210

Seat : EPDM
 Disc : Aluminum Bronze
 Shaft : AISI420 Stainless Steel
 Working Temperature : +110°C
 Working Pressure : 0-16 Bar

KNIFE GATE VALVE



KNIFE GATE VALVE

MANUAL KNIFE GATE VALVE



SIZE	MODEL	UNI-DIRECTIONAL	BI-DIRECTIONAL
		SEALING	SEALING
		PRICE €	PRICE €
DN50	BVM0050	242	249
DN65	BVM0065	269	282
DN80	BVM0080	282	329
DN100	BVM0100	309	383
DN125	BVM0125	417	491
DN150	BVM0150	511	612
DN200	BVM0200	652	834
DN250	BVM0250	1002	1277
DN300	BVM0300	1385	1721
DN350	BVM0350	2555	2595
DN400	BVM0400	3160	3227
DN500	BVM0500	7059	7395

Body : GGG-40
 Knife : AISI304 / AISI316
 Seat Ring : EPDM, NBR, Viton, Teflon
 Working Temperature : -10°C / +110°C
 Working Pressure : 0-16 Bar
 Pressure Class : PN16
 Optional : Ask for stainless steel (304 - 316) body.

PNEUMATIC OPERATED KNIFE GATE VALVE



SIZE	MODEL	UNI-DIRECTIONAL	BI-DIRECTIONAL
		SEALING	SEALING
		PRICE €	PRICE €
DN50	BVP0050	437	457
DN65	BVP0065	497	511
DN80	BVP0080	518	551
DN100	BVP0100	531	605
DN125	BVP0125	706	780
DN150	BVP0150	800	908
DN200	BVP0200	1082	1277
DN250	BVP0250	1681	1936
DN300	BVP0300	2252	2689
DN350	BVP0350	3832	4034
DN400	BVP0400	5378	5714
DN500	BVP0500	9950	10756

Pneumatic Piston : Double Acting / Magnetic
 Body : GGG-40
 Knife : AISI304 / AISI316
 Seat Ring : EPDM, NBR, Viton, Teflon
 Working Temperature : -10°C / +110°C
 Working Pressure : 0-16 Bar
 Pressure Class : PN16
 Optional : Ask for stainless steel (304 - 316) body.
 Ask for Switch and Direction Valve.

GATE VALVES

METAL SEATED GATE VALVE

SIZE	MODEL	(F4 PN16) PRICE €	(F5 PN16) PRICE €
DN40	USV-M0040	194	244
DN50	USV-M0050	198	248
DN65	USV-M0065	246	285
DN80	USV-M0080	295	343
DN100	USV-M0100	360	426
DN125	USV-M0125	537	682
DN150	USV-M0150	732	884
DN200	USV-M0200	1182	1434
DN250	USV-M0250	1872	2252
DN300	USV-M0300	2587	3302
DN350	USV-M0350	4050	4794

Body : EN-GJS-400-500 (GGG40-50)
 Cover : EN-GJS-400-500 (GGG40-50)
 Shaft : X20Cr13
 Cover Gasket : EPDM
 Cover Bolt : 8.8 Galvanized
 Bearing : MS58
 Connection : EN1092-2



DISMANTLING / BUTTERFLY VALVE

DISMANTLING JOINT

SIZE	MODEL	PRICE €
DN40	UDP-0040	155
DN50	UDP-0050	163
DN65	UDP-0065	176
DN80	UDP-0080	205
DN100	UDP-0100	275
DN125	UDP-0125	351
DN150	UDP-0150	422
DN200	UDP-0200	599
DN250	UDP-0250	773
DN300	UDP-0300	1041
DN350	UDP-0350	1281
DN400	UDP-0400	1653

Long Piece : Ductilo Iron EN-GJS-400-15
 Short Piece : Ductilo Iron EN-GJS-400-15
 Thrust Flange : Steel S235JR
 Sealing Ring : EPDM
 Nut : Steel - Galvanized
 Thrust : Steel - Galvanized



RESILIENT SEATED GATE VALVE

SIZE	MODEL	(F4 PN16) PRICE €	(F5 PN16) PRICE €
DN40	USV-E0040	134	147
DN50	USV-E0050	136	149
DN65	USV-E0065	178	198
DN80	USV-E0080	215	240
DN100	USV-E0100	248	281
DN125	USV-E0125	368	434
DN150	USV-E0150	463	546
DN200	USV-E0200	781	917
DN250	USV-E0250	1227	1397
DN300	USV-E0300	1670	1909
DN350	USV-E0350	2182	3273
DN400	USV-E0400	3410	4422

Body : EN-GJS-400-500 (GGG40-50)
 Cover : EN-GJS-400-500 (GGG40-50)
 Shaft : X20Cr13
 Cover Gasket : EPDM
 Cover Bolt : 8.8 IMBUS
 Bearing : MS58
 Connection : EN1092-2



DOUBLE FLANGED BUTTERFLY VALVE

SIZE	MODEL	PRICE €
DN100	UKLB-280100	1178
DN125	UKLB-280125	1248
DN150	UKLB-280150	1335
DN200	UKLB-280200	1562
DN250	UKLB-280250	2042
DN300	UKLB-280300	2442
DN350	UKLB-280350	3385
DN400	UKLB-280400	3831

Body : Ductilo Iron EN-GJS-400-15
 Disc : Ductilo Iron EN-GJS-400-15
 Sealing Ring : EPDM
 Bearing : Bronze
 O-ring : EPDM
 Shaft Cover : Ductilo Iron EN-GJS-400-15



GLOBE VALVES

STRAIGHT TYPE GLOBE VALVE

SIZE	MODEL	CAST IRON PRICE €	DUCTILO IRON PRICE €
DN15	1530100	-	143
DN20	1530101	-	164
DN25	1530102	-	193
DN32	1530103	-	232
DN40	1530104	-	307
DN50	1530105	304	375
DN65	1530106	357	464
DN80	1530107	468	618
DN100	1530108	664	957
DN125	1530109	1014	1196
DN150	1530110	1407	1607
DN200	1530111	-	2871



METAL SEATED GLOBE VALVE

SIZE	MODEL	DUCTILO IRON PRICE €
DN15	1530066	264
DN20	1530067	271
DN25	1530068	304
DN32	1530069	336
DN40	1530070	425
DN50	1530071	475
DN65	1530072	589
DN80	1530073	739
DN100	1530074	1050
DN125	1530075	1407
DN150	1530076	1954
DN200	1530077	3646



CHECK VALVE / STRAINER

SWING CHECK VALVE

SIZE	MODEL	PRICE €
DN40	2360040	107
DN50	2360050	114
DN65	2360065	153
DN80	2360080	187
DN100	2360100	232
DN125	2360125	340
DN150	2360150	463
DN200	2360200	773
DN250	2360250	1222



Body : EN-GJS-400-500 (GGG40-50)
Cover : EN-GJS-400-500 (GGG40-50)
Cover Bolt : 8.8 Galvanized

Bearing : MS58
Cover Gasket : EPDM
Disc : EPDM Coated

FLANGED LIFT CHECK VALVE (SPRING LOADED)

SIZE	MODEL	CAST IRON		DUCTILO IRON	
		PRICE €	PRICE €	PRICE €	PRICE €
DN15	2400015	63	68		
DN20	240020	84	90		
DN25	240025	93	98		
DN32	240032	120	147		
DN40	240040	150	180		
DN50	240050	191	221		
DN65	240065	294	343		
DN80	240080	365	436		
DN100	240100	466	555		
DN125	240125	1452	1670		
DN150	240150	1906	2190		
DN200	240200	3703	4256		



FLANGED STRAINER

SIZE	MODEL	CAST IRON		DUCTILO IRON	
		PRICE €	PRICE €	PRICE €	PRICE €
DN15	2470015	45	46		
DN20	2470020	52	52		
DN25	2470025	56	56		
DN32	2470032	63	79		
DN40	2470040	65	90		
DN50	2470050	78	105		
DN65	2470065	117	152		
DN80	2470080	165	187		
DN100	2470100	193	237		
DN125	2470125	308	351		
DN150	2470150	435	538		
DN200	2470200	806	840		



Type : VPT
Body : Cast Iron
Pressure Class : PN16, PN25
Working Temperature : -20°C / +350°C

CAST IRON BALL VALVES



3 PIECES CAST IRON THREADED BALL VALVE - LEVER OPERATED

SIZE	MODEL	PRICE €
1/2"	4000015	54
3/4"	4000020	60
1"	4000025	82
1 1/4"	4000032	103
1 1/2"	4000040	139
2"	4000050	166
2 1/2"	4000065	229
3"	4000080	327
4"	4000100	585



Body : GGG40
 Seat : PTFE - Teflon
 Pressure Class : PN16
 Nut : 5.6
 Connection : Threaded

2 PIECES CAST IRON FLANGED BALL VALVE - LEVER OPERATED

SIZE	MODEL	PRICE €
DN15	4040015	54
DN20	4040020	55
DN25	4040025	71
DN32	4040032	78
DN40	4040040	88
DN50	4040050	100
DN65	4040065	132
DN80	4040080	161
DN100	4040100	211
DN125	4040125	294
DN150	4040150	429
DN200	4040200	919



Body : (DN15-32) - GG25
 Seat : PTFE - Teflon
 Pressure Class : PN16
 Nut : 5.6
 Connection : Flanşlı

2 PIECES CAST IRON FLANGED BALL VALVE - MOUNTING PAD

SIZE	MODEL	PRICE €
DN15	4030015	87
DN20	4030020	114
DN25	4030025	123
DN32	4030032	163
DN40	4030040	155
DN50	4030050	177
DN65	4030065	231
DN80	4030080	299
DN100	4030100	441
DN125	4030125	708
DN150	4030150	1184
DN200	4030200	2110



Body : (DN15-32) - GG25
 (DN40-200) - GGG40
 Seat : PTFE - Teflon
 Pressure Class : PN16
 Nut : 5.6
 Connection : Flanged



CAST IRON BALL VALVES

3 PIECES CAST IRON FLANGED BALL VALVE - MOUNTING PAD

SIZE	MODEL	PRICE €
DN15	4010015	82
DN20	4010020	101
DN25	4010025	114
DN32	4010032	155
DN40	4010040	175
DN50	4010050	226
DN65	4010065	291
DN80	4010080	395
DN100	4010100	592
DN125	4010125	945
DN150	4010150	1573
DN200	4010200	2587



Body : GG25
 Seat : PTFE - Teflon
 Pressure Class : PN16
 Nut : 5.6
 Connection : Flanged

MONOBLOCK BALL VALVE



Body : AISI304 / AISI316
 Sealing : PTFE
 Pressure Class : PN16
 Working Temp. : -30°C / +220°C



Body : Carbon
 Sealing : PTFE
 Pressure Class : PN16
 Working Temp. : -30°C / +220°C

AISI 304			AISI 316			CARBON STEEL		
SIZE	MODEL	PRICE €	SIZE	MODEL	PRICE €	SIZE	MODEL	PRICE €
DN15	4020015		DN15	4021015		DN15	4022015	101
DN20	4020020		DN20	4021020		DN20	4022020	109
DN25	4020025		DN25	4021025		DN25	4022025	123
DN32	4020032		DN32	4021032		DN32	4022032	182
DN40	4020040		DN40	4021040		DN40	4022040	223
DN50	4020050	ASK FOR PRICE	DN50	4021050	ASK FOR PRICE	DN50	4022050	272
DN65	4020065	ASK FOR PRICE	DN65	4021065	ASK FOR PRICE	DN65	4022065	395
DN80	4020080	ASK FOR PRICE	DN80	4021080	ASK FOR PRICE	DN80	4022080	558
DN100	4020100		DN100	4021100		DN100	4022100	967
DN125	4020125		DN125	4021125		DN125	4022125	1797
DN150	4020150		DN150	4021150		DN150	4022150	3757
DN200	4020200		DN200	4021200		DN200	4022200	6153



PNEUMATIC AND ELECTRIC ACTUATORS



PNEUMATIC ACTUATORS

DOUBLE ACTING PNEUMATIC ACTUATOR



6 Bars Air		
MODEL	TORQUE (N·m)	PRICE €
UDA 040	12	78
UDA 052	25	108
UDA 063	45	132
UDA 075	74	150
UDA 083	98	162
UDA 092	140	204
UDA 105	207	322
UDA 125	308	405
UDA 140	514	536
UDA 160	800	714
UDA 190	1361	1367
UDA 210	1870	2140
UDA 240	2931	4040
UDA 270	4122	7129



Body : Aluminum Extrusion
 Pistons : Aluminum Casting
 Shaft : Cadmium Layer Steel
 O-ring : Nitrile Rubber

SINGLE ACTING PNEUMATIC ACTUATOR



6 Bars Air		
MODEL	TORQUE (N·m)	PRICE €
USA 052	15,5	160
USA 063	27	188
USA 075	37	235
USA 083	56	263
USA 092	82	329
USA 105	123	472
USA 125	180	770
USA 140	308	947
USA 160	470	1112
USA 190	658	1664
USA 210	836	2734



Body : Aluminum Extrusion
 Pistons : Aluminum Casting
 Shaft : Cadmium Layer Steel
 O-ring : Nitrile Rubber

PNEUMATIC ACTUATORS

COLD ENVIRONMENT (-50°C) PNEUMATIC ACTUATORS



MODEL	STANDART FLANGE	TORQUE (N·m) 6 Bars Air	PRICE €
UDA 040	F03	12	105
UDA 052	F03/F04	25	118
UDA 063	F04/F05/F07	45	155
UDA 075	F04/F05/F07	74	211
UDA 083	F05/F07	98	240
UDA 092	F05/F07	140	292
UDA 105	F07/F10	207	367
UDA 125	F07/F10	308	432
UDA 140	F10/F14	514	707
UDA 160	F10/F14	800	1204

120°C RETURN PNEUMATIC ACTUATORS



MODEL	STANDART FLANGE	TORQUE(N·m) 6 Bars Air	PRICE €
UDA 040	F03/F04	12	
UDA 052	F04/F05/F07	25	
UDA 063	F05/F07	45	
UDA 075	F05/F07	74	
UDA 083	F05/F07	98	

ASK FOR PRICE

TEFLON COATED DOUBLE ACTING PNEUMATIC ACTUATOR (UDA)



MODEL	STANDART FLANGE	TORQUE(N·m) 6 Bars Air	PRICE €
UDA 040	F03	12	
UDA 052	F03/F04	25	
UDA 063	F04/F05/F07	45	
UDA 075	F04/F05/F07	74	
UDA 083	F05/F07	98	
UDA 092	F05/F07	140	
UDA 105	F07/F10	207	
UDA 125	F07/F10	308	
UDA 140	F10/F14	514	
UDA 160	F10/F14	800	

ASK FOR PRICE



EXPROOF PNEUMATIC ACTUATORS

DOUBLE ACTING EXPROOF PNEUMATIC ACTUATOR



MODEL	TORQUE (N·m) 6 Bars Air	PRICE €
UDA EX 040	12	109
UDA EX 052	25	151
UDA EX 063	45	185
UDA EX 075	74	209
UDA EX 083	98	226
UDA EX 092	140	285
UDA EX 105	207	451
UDA EX 125	308	567
UDA EX 140	514	750
UDA EX 160	800	999
UDA EX 190	1361	1914
UDA EX 210	1870	2995

SINGLE ACTING EXPROOF PNEUMATIC ACTUATOR



MODEL	TORQUE (N·m) 6 Bars Air	PRICE €
USA EX 052	15,5	203
USA EX 063	27	239
USA EX 075	37	300
USA EX 083	56	335
USA EX 092	82	419
USA EX 105	123	601
USA EX 125	180	980
USA EX 140	308	1205
USA EX 160	470	1415
USA EX 190	658	2118
USA EX 210	836	3479

ELECTRIC ACTUATORS

ROTARY - LINEAR 220V / 24V ELECTRIC ACTUATORS

ROTARY 220V AC ELECTRIC ACTUATOR

MODEL	TORQUE (N·m)	ON-OFF PRICE €	4-20 mA PRICE €
UKST-05	50	314	
UKST-10	100	448	
UKST-20	200	656	
UKST-40	400	696	
UKST-60	600	873	
UKST-100	1000	1311	

ASK FOR PRICE



Body : Aluminum
 Protection Class : IP 67
 Working Temperature : -10°C / +80°C
 Connection : ISO 5211
 Electric Connection : 1/2" Water Protected

IT CAN BE CONTROLLED MANUALLY IN CASE OF ENERGY FAILURE
 ASK PRICE FOR PROPORTIONAL AND 380 V ELECTRIC ACTUATOR

ASK FOR PRICE FOR EXPROOF APPLICATIONS

ROTARY 24V DC ELECTRIC ACTUATOR

MODEL	TORQUE (N·m)	ON-OFF PRICE €	4-20 mA PRICE €
UKST-005	50	323	
UKST-010	100	455	
UKST-020	200	663	
UKST-040	400	704	
UKST-060	600	880	
UKST-1000	1000	1348	

ASK FOR PRICE

LINEAR 220V AC ELECTRIC ACTUATOR

MODEL	TORQUE (N·m)	PRICE €
MVE-215	1500	1406
MVE-222	2200	1778

ASK PRICE FOR PROPORTIONAL AND 380 V ELECTRIC ACTUATOR



LINEAR 24V DC ELECTRIC ACTUATOR

MODEL	TORQUE (N·m)	PRICE €
MVE-515	1500	1452
MVE-522	2200	1848

ASK PRICE FOR PROPORTIONAL AND 380 V ELECTRIC ACTUATOR



ELECTRIC ACTUATORS

ROTARY ELECTRIC ACTUATOR

TORQUE (N·m)	MODEL	PRICE € 220V AC	MODEL	PRICE € 24V DC
50	UYT-05	480	UYT-005	480
100	UYT-10	650	UYT-010	650

Body : Aluminum
 Protection Class : IP 67
 Working Temperature : -10°C / +80°C
 Power Supply : 85-265 V AC / 24 V DC
 Control Signal : On-Off Control 24 V DC
 Working Time : 8-10 sn
 Ambient Temperature : -20° / +60°C
 Manual Control : Handwheel
 Position Indicator : Open/Close Continuous
 Motor : 24 V DC 6W Brush Motor
 Connection : ISO 5211
 Electric Connection : 1/2" Water Protected



220V AC ON-OFF PVC ELECTRIC ACTUATOR

MODEL	TORQUE (N·m)	PRICE €
URL-03AC	30	172
URL-05AC	50	214

24V DC ON-OFF PVC ELECTRIC ACTUATOR

MODEL	TORQUE (N·m)	PRICE €
URL-03DC	30	172
URL-05DC	50	214

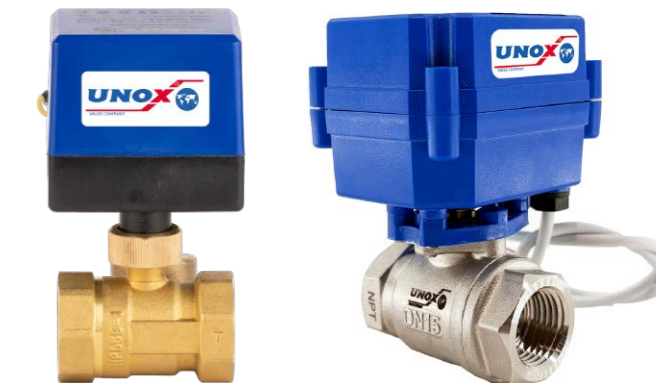
Body : Plastik ABS
 Koruma Sınıfı : IP 67
 Working Temperature : -10°C / +80°C
 Bağlantı : ISO 5211
 Elektrik Bağlantısı : 1/2" Su Korumalı



MINI MOTORIZED BALL VALVES

SIZE	BRASS		AISI304	
	MODEL	PRICE €	MODEL	PRICE €
1/2"	MMV.015	85	MMVP.015	116
3/4"	MMV.020	87	MMVP.020	119
1"	MMV.025	95	MMVP.025	129

Body : Brass / AISI304 Stainless Steel
 Protection Class : IP66
 Working Temperature : -4°C / +110°C
 Pressure Class : PN16
 Shaft : Nickel Coated Brass
 Spring : Stainless Steel
 Seat : EPDM



ELECTRIC ACTUATORS

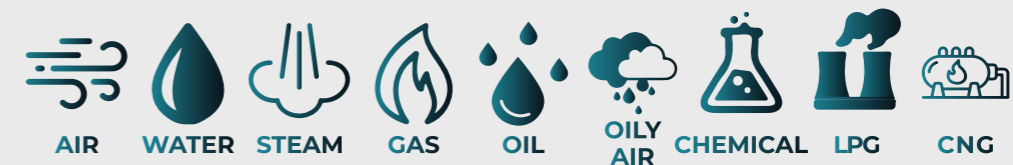
MULTI-TURN ACTUATOR



MODEL	OUTPUT CYCLE	OUTPUT POWER	MAX. CUT ACCEPTANCE		RATING (Kw)	RATED CURRENT (A)	CONNECTION TYPE	PRICE €
			A	B				
UDK-10	18	34	Ø33	Ø22	0,8	0,55	F10	3248
UDK-10	24	34	Ø33	Ø22	0,8	0,55	F10	3248
UDK-10	36	34	Ø33	Ø22	0,8	0,55	F10	3248
UDK-10	48	34	Ø33	Ø22	0,12	1	F10	3248
UDK-10	72	34	Ø33	Ø22	0,15	1,2	F10	3248
UDK-10	96	34	Ø33	Ø22	0,2	1,6	F10	3248
UDK-12	18	81	Ø33	Ø22	0,13	1,2	F10	4115
UDK-12	24	81	Ø33	Ø22	0,16	1,3	F10	4115
UDK-12	36	81	Ø33	Ø22	0,22	1,8	F10	4115
UDK-12	48	68	Ø33	Ø22	0,22	1,8	F10	4115
UDK-12	72	48	Ø33	Ø22	0,22	1,8	F10	4115
UDK-12	96	41	Ø33	Ø22	0,22	1,8	F10	4115
UDK-18	18	108	Ø33	Ø22	0,17	1,5	F10	5418
UDK-18	24	108	Ø33	Ø22	0,21	1,75	F10	5418
UDK-20	18	203	Ø52	Ø40	0,33	2,71	F14	6135
UDK-20	24	203	Ø52	Ø40	0,42	2,75	F14	6135
UDK-20	36	203	Ø52	Ø40	0,52	3,5	F14	6135
UDK-20	48	203	Ø52	Ø40	0,63	3,8	F14	6135
UDK-20	72	176	Ø52	Ø40	0,74	5,95	F14	6135
UDK-20	96	142	Ø52	Ø40	0,83	6,05	F14	6135
UDK-20	144	102	Ø52	Ø40	0,84	6,15	F14	6135



ACTUATED VALVES



PNEUMATIC ACTUATED U-PVC VALVES



DOUBLE ACTING PNEUMATIC ACTUATED U-PVC BALL VALVES



SIZE (mm)	SOLVENT WELD	
	WATER PVC PRICE €	ACID PVC PRICE €
Ø20	92	110
Ø25	94	118
Ø32	96	132
Ø40	128	174
Ø50	132	186
Ø63	162	226
Ø75	212	354
Ø90	256	438
Ø110	320	530

PNEUMATIC ACTUATED U-PVC VALVES



DOUBLE ACTING PNEUMATIC ACTUATED U-PVC BUTTERFLY VALVE



SIZE (mm)	SOLVENT WELD	
	WATER PVC PRICE €	ACID PVC PRICE €
Ø63	214	254
Ø75	222	266
Ø90	228	276
Ø110	242	296
Ø125	274	336
Ø140	274	336
Ø160	320	398
Ø200	468	600
Ø225	586	718
Ø250	1.103	1.453
Ø280	1.103	1.453
Ø315	2.201	3.099

SINGLE ACTING PNEUMATIC ACTUATED U-PVC BALL VALVES



SIZE (mm)	SOLVENT WELD	
	WATER PVC PRICE €	ACID PVC PRICE €
Ø20	158	176
Ø25	160	184
Ø32	162	198
Ø40	164	210
Ø50	194	248
Ø63	243	307
Ø75	318	460
Ø90	404	586
Ø110	586	796

SINGLE ACTING PNEUMATIC ACTUATED U-PVC BUTTERFLY VALVE



SIZE (mm)	SOLVENT WELD	
	WATER PVC PRICE €	ACID PVC PRICE €
Ø63	270	310
Ø75	278	322
Ø90	359	407
Ø110	439	493
Ø125	596	658
Ø140	596	658
Ø160	630	708
Ø200	736	868
Ø225	1.034	1.166
Ø250	1.468	1.818
Ø280	1.468	1.818
Ø315	2.743	3.641

PNEUMATIC ACTUATED U-PVC VALVES



DOUBLE ACTING PNEUMATIC ACTUATED U-PVC SET BUTTERFLY VALVE

SIZE (mm)	FOR WATER (NBR SEAT)		FOR ACID (FKM SEAT)	
	CODE	PRICE €	CODE	PRICE €
Ø63	400063	252	500063	312
Ø75	400075	262	500075	326
Ø90	400090	276	500090	348
Ø110	400110	296	500110	374
Ø125	400125	336	500125	434
Ø140	400140	336	500140	434
Ø160	400160	440	500160	578
Ø200	400200	594	500200	788
Ø225	400225	720	500225	918
Ø250	400250	1.413	500250	1.915
Ø280	400280	1.443	500280	1.961
Ø315	400315	2.699	500315	3.847

SINGLE ACTING PNEUMATIC ACTUATED U-PVC SET BUTTERFLY VALVE

SIZE (mm)	FOR WATER (NBR SEAT)		FOR ACID (FKM SEAT)	
	CODE	PRICE €	CODE	PRICE €
Ø63	401063	308	501063	368
Ø75	401075	318	501075	382
Ø90	401090	407	501090	479
Ø110	401110	493	501110	571
Ø125	401125	658	501125	756
Ø140	401140	658	501140	756
Ø160	401160	750	501160	888
Ø200	401200	862	501200	1.056
Ø225	401225	1.168	501225	1.366
Ø250	401250	1.778	501250	2.280
Ø280	401280	1.808	501280	2.326
Ø315	401315	3.241	501315	4.389

ELECTRIC ACTUATED U-PVC VALVES



220V AC ELECTRIC ACTUATED U-PVC BALL VALVE

SIZE (mm)	SOLVENT WELD	
	WATER PVC PRICE €	ACID PVC PRICE €
Ø20	189	210
Ø25	191	220
Ø32	194	237
Ø40	196	251
Ø50	201	266
Ø63	359	436
Ø75	419	589
Ø90	450	669
Ø110	645	897

Ask for price for proportional.



24V DC ELECTRIC ACTUATED U-PVC BALL VALVES

SIZE (mm)	SOLVENT WELD	
	WATER PVC PRICE €	ACID PVC PRICE €
Ø20	189	210
Ø25	191	220
Ø32	194	237
Ø40	196	251
Ø50	201	266
Ø63	359	436
Ø75	419	589
Ø90	450	669
Ø110	645	897

Ask for price for proportional.



ELECTRIC ACTUATED U-PVC VALVES



220V AC ELECTRIC ACTUATED U-PVC BUTTERFLY VALVES



SIZE (mm)	WATER PVC	ACID PVC
	PRICE €	PRICE €
Ø63	270	318
Ø75	280	333
Ø90	438	496
Ø110	455	520
Ø125	472	546
Ø140	472	546
Ø160	513	606
Ø200	772	930
Ø225	1.021	1.179
Ø250	1.542	1.962
Ø280	1.542	1.962
Ø315	2.859	3.937

Ask for price for proportional.

24V DC ELECTRIC ACTUATED U-PVC BUTTERFLY VALVES



SIZE (mm)	WATER PVC	ACID PVC
	PRICE €	PRICE €
Ø63	270	318
Ø75	280	333
Ø90	438	496
Ø110	455	520
Ø125	472	546
Ø140	472	546
Ø160	513	606
Ø200	772	930
Ø225	1.021	1.179
Ø250	1.542	1.962
Ø280	1.542	1.962
Ø315	2.859	3.937

Ask for price for proportional.

ELECTRIC ACTUATED U-PVC VALVES



220V AC ELECTRIC ACTUATED U-PVC SET BUTTERFLY VALVE

SIZE (mm)	FOR WATER (NBR SEAT)		FOR ACID (FKM SEAT)	
	CODE	PRICE €	CODE	PRICE €
Ø63	410063	316	510063	388
Ø75	410075	328	510075	405
Ø90	410090	496	510090	582
Ø110	410110	520	510110	613
Ø125	410125	546	510125	664
Ø140	410140	546	510140	664
Ø160	410160	657	510160	822
Ø200	410200	923	510200	1.156
Ø225	410225	1.182	510225	1.419
Ø250	410250	1.914	510250	2.516
Ø280	410280	1.950	510280	2.571
Ø315	410315	3.457	510315	4.834

24V DC ELECTRIC ACTUATED U-PVC SET BUTTERFLY VALVE

SIZE (mm)	FOR WATER (NBR SEAT)		FOR ACID (FKM SEAT)	
	CODE	PRICE €	CODE	PRICE €
Ø63	411063	316	511063	388
Ø75	411075	328	511075	405
Ø90	411090	496	511090	582
Ø110	411110	520	511110	613
Ø125	411125	546	511125	664
Ø140	411140	546	511140	664
Ø160	411160	657	511160	822
Ø200	411200	923	511200	1.156
Ø225	411225	1.182	511225	1.419
Ø250	411250	1.914	511250	2.516
Ø280	411280	1.950	511280	2.571
Ø315	411315	3.457	511315	4.834

PNEUMATIC ACTUATED VALVES

DOUBLE ACTING PNEUMATIC ACTUATED STAINLESS STEEL THREADED BALL VALVES

SIZE	AISI 304		AISI 316	
	2 PIECE PRICE €	3 PIECE PRICE €	2 PIECE PRICE €	3 PIECE PRICE €
1/2"	113	127	129	139
3/4"	128	135	144	146
1"	183	190	199	210
1¼"	210	215	241	237
1½"	275	281	322	320
2"	317	322	375	381
2½"	530	525	-	672
3"	806	762	-	912
4"	-	1.462	-	1.859



PNEUMATIC ACTUATED VALVES

DOUBLE ACTING PNEUMATIC ACTUATED STAINLESS STEEL THREADED BALL VALVES

SIZE	AISI 304		AISI 316	
	3 WAY L-PORT PRICE €	3 WAY T-PORT PRICE €	3 WAY L-PORT PRICE €	3 WAY T-PORT PRICE €
1/2"	145	151	161	169
3/4"	187	210	213	230
1"	245	262	278	292
1¼"	320	339	366	389
1½"	420	442	497	530
2"	508	538	649	696
2½"	917	987	1.000	1.084
3"	1.684	1.795	2.155	2.335



SINGLE ACTING PNEUMATIC ACTUATED STAINLESS STEEL THREADED BALL VALVES

SIZE	AISI 304		AISI 316	
	2 PIECE PRICE €	3 PIECE PRICE €	2 PIECE PRICE €	3 PIECE PRICE €
1/2"	204	217	219	229
3/4"	218	226	234	237
1"	271	278	287	298
1¼"	298	303	329	325
1½"	388	394	436	433
2"	430	436	488	494
2½"	655	649	-	796
3"	1.101	1.057	-	1.207
4"	-	1.955	-	2.352



SINGLE ACTING PNEUMATIC ACTUATED STAINLESS STEEL THREADED BALL VALVES

SIZE	AISI 304		AISI 316	
	3 WAY L-PORT PRICE €	3 WAY T-PORT PRICE €	3 WAY L-PORT PRICE €	3 WAY T-PORT PRICE €
1/2"	235	241	251	260
3/4"	275	298	301	318
1"	359	375	392	405
1¼"	433	452	480	503
1½"	545	567	622	655
2"	692	722	833	880
2½"	1.212	1.282	1.295	1.378
3"	2.177	2.288	2.648	2.828



PNEUMATIC ACTUATED VALVES

DOUBLE ACTING PNEUMATIC ACTUATED STAINLESS STEEL FLANGED BALL VALVES

SIZE	AISI 304		AISI 316	
	2 PIECE PRICE €	3 PIECE PRICE €	2 PIECE PRICE €	3 PIECE PRICE €
DN15	209	207	240	238
DN20	227	238	284	255
DN25	290	311	219	347
DN32	375	391	452	483
DN40	453	504	553	573
DN50	530	594	669	653
DN65	670	760	895	880
DN80	866	1.001	1.078	1.251
DN100	1.136	1.411	1.493	1.760



PNEUMATIC ACTUATED VALVES

DOUBLE ACTING PNEUMATIC ACTUATED WAFER TYPE BUTTERFLY VALVES

SIZE	IRON DISC	AISI304 DISC	AISI316 DISC
	PRICE €	PRICE €	PRICE €
DN40	181	184	198
DN50	184	188	201
DN65	190	196	217
DN80	224	230	251
DN100	257	282	318
DN125	307	360	402
DN150	348	423	488
DN200	651	780	893
DN250	893	1.135	1.301
DN300	1.029	1.453	1.785



Body : GGG-40 Cast Iron
 Seat : EPDM (Ask for price for NBR, VITON etc. seals)
 Shaft : Stainless Steel

SINGLE ACTING PNEUMATIC ACTUATED STAINLESS STEEL FLANGED BALL VALVES

SIZE	AISI 304		AISI 316	
	2 PIECE PRICE €	3 PIECE PRICE €	2 PIECE PRICE €	3 PIECE PRICE €
DN15	299	297	330	328
DN20	317	328	374	345
DN25	378	399	307	435
DN32	463	479	540	571
DN40	567	617	667	686
DN50	644	707	782	767
DN65	794	884	1.020	1.004
DN80	1.161	1.296	1.373	1.546
DN100	1.629	1.904	1.986	2.253



SINGLE ACTING PNEUMATIC ACTUATED WAFER TYPE BUTTERFLY VALVES

SIZE	IRON DISC	AISI304 DISC	AISI316 DISC
	PRICE €	PRICE €	PRICE €
DN40	261	264	278
DN50	264	268	281
DN65	270	276	297
DN80	327	333	354
DN100	360	385	421
DN125	420	473	515
DN150	515	590	655
DN200	1.099	1.228	1.341
DN250	1.435	1.677	1.843
DN300	1.571	1.995	2.327



Body : GGG-40 Cast Iron
 Seat : EPDM (Ask for price for NBR, VITON etc. seals)
 Shaft : Stainless Steel

PNEUMATIC ACTUATED VALVES

DOUBLE ACTING PNEUMATIC ACTUATED LUG TYPE BUTTERFLY VALVES

SIZE	IRON DISC	AISI304 DISC	AISI316 DISC
	PRICE €	PRICE €	PRICE €
DN40	200	201	219
DN50	204	205	221
DN65	211	227	241
DN80	257	285	287
DN100	295	322	360
DN125	349	409	460
DN150	401	474	553
DN200	752	924	1.062
DN250	1.075	1.327	1.559
DN300	1.214	1.692	2.057



Body : GGG-40 Cast Iron
 Seat : EPDM (Ask for price for NBR, VITON etc. seals)
 Shaft : Stainless Steel

ELECTRIC ACTUATED VALVES

220V AC ELECTRIC ACTUATED WAFER TYPE BUTTERFLY VALVES

SIZE	IRON DISC	AISI304 DISC	AISI316 DISC
	PRICE €	PRICE €	PRICE €
DN40	245	248	262
DN50	248	252	265
DN65	254	260	281
DN80	406	412	433
DN100	439	464	500
DN125	471	524	566
DN150	634	709	774
DN200	985	1.114	1.227
DN250	1.184	1.426	1.592
DN300	1.497	1.921	2.253



Body : GGG-40 Cast Iron
 Seat : EPDM (Ask for price for NBR, VITON etc. seals)
 Shaft : Stainless Steel

SINGLE ACTING PNEUMATIC ACTUATED LUG TYPE BUTTERFLY VALVES

SIZE	IRON DISC	AISI304 DISC	AISI316 DISC
	PRICE €	PRICE €	PRICE €
DN40	280	281	299
DN50	284	285	301
DN65	291	307	321
DN80	360	388	390
DN100	398	425	463
DN125	462	522	573
DN150	568	641	720
DN200	1.200	1.372	1.510
DN250	1.617	1.869	2.101
DN300	1.756	2.234	2.599



Body : GGG-40 Cast Iron
 Seat : EPDM (Ask for price for NBR, VITON etc. seals)
 Shaft : Stainless Steel

24V DC ELECTRIC ACTUATED WAFER TYPE BUTTERFLY VALVES

SIZE	IRON DISC	AISI304 DISC	AISI316 DISC
	PRICE €	PRICE €	PRICE €
DN40	245	248	262
DN50	248	252	265
DN65	254	260	281
DN80	415	421	442
DN100	448	473	509
DN125	480	533	575
DN150	641	716	781
DN200	992	1.121	1.234
DN250	1.192	1.434	1.600
DN300	1.504	1.928	2.260



Body : GGG-40 Cast Iron
 Seat : EPDM (Ask for price for NBR, VITON etc. seals)
 Shaft : Stainless Steel

ELECTRIC ACTUATED VALVES

220V AC ELECTRIC ACTUATED LUG TYPE BUTTERFLY VALVES

SIZE	IRON DISC	AISI304 DISC	AISI316 DISC
	PRICE €	PRICE €	PRICE €
DN40	264	265	283
DN50	268	269	285
DN65	275	291	305
DN80	439	467	469
DN100	477	504	542
DN125	513	573	624
DN150	687	760	839
DN200	1.086	1.258	1.396
DN250	1.366	1.618	1.850
DN300	1.682	2.160	2.525



Body : GGG-40 Cast Iron
 Seat : EPDM (Ask for price for NBR, VITON etc. seals)
 Shaft : Stainless Steel

24V DC ELECTRIC ACTUATED LUG TYPE BUTTERFLY VALVES

SIZE	IRON DISC	AISI304 DISC	AISI316 DISC
	PRICE €	PRICE €	PRICE €
DN40	264	265	283
DN50	268	269	285
DN65	275	291	305
DN80	448	476	478
DN100	486	513	551
DN125	522	582	633
DN150	694	767	846
DN200	1.093	1.265	1.403
DN250	1.374	1.626	1.858
DN300	1.689	2.167	2.532



Body : GGG-40 Cast Iron
 Seat : EPDM (Ask for price for NBR, VITON etc. seals)
 Shaft : Stainless Steel

ELECTRIC ACTUATED VALVES

220V AC ELECTRIC ACTUATED THREADED BALL VALVES

SIZE	AISI 304		AISI 316	
	2 PIECE	3 PIECE	2 PIECE	3 PIECE
	PRICE €	PRICE €	PRICE €	PRICE €
1/2"	217	231	232	242
3/4"	231	239	248	250
1"	253	261	270	281
1¼"	281	285	311	307
1½"	475	481	523	520
2"	517	523	575	581
2½"	858	853	493	1.000
3"	1.304	1.260	722	1.409
4"	-	1.873	-	2.270



24V DC ELECTRIC ACTUATED THREADED BALL VALVES

SIZE	AISI 304		AISI 316	
	2 PIECE	3 PIECE	2 PIECE	3 PIECE
	PRICE €	PRICE €	PRICE €	PRICE €
1/2"	217	231	232	242
3/4"	231	239	248	250
1"	253	261	270	281
1¼"	281	285	311	307
1½"	485	491	532	530
2"	527	532	585	591
2½"	866	860	501	1.008
3"	1.311	1.267	729	1.417
4"	-	1.882	-	2.279



ELECTRIC ACTUATED VALVES

220V AC ELECTRIC ACTUATED THREADED BALL VALVES

SIZE	AISI 304		AISI 316	
	3 WAY L-PORT PRICE €	3 WAY T-PORT PRICE €	3 WAY L-PORT PRICE €	3 WAY T-PORT PRICE €
1/2"	248	254	264	273
3/4"	257	281	284	300
1"	289	306	322	336
1¼"	520	539	567	590
1½"	601	623	678	711
2"	823	853	964	1.011
2½"	1.415	1.484	1.497	1.581
3"	2.096	2.207	2.566	2.747



ELECTRIC ACTUATED VALVES

220V AC ELECTRIC ACTUATED FLANGED BALL VALVES

SIZE	AISI 304		AISI 316	
	2 PIECE PRICE €	3 PIECE PRICE €	2 PIECE PRICE €	3 PIECE PRICE €
DN15	312	310	343	341
DN20	330	341	387	359
DN25	361	382	289	417
DN32	446	461	523	553
DN40	653	704	754	773
DN50	730	794	869	854
DN65	998	1.088	1.223	1.208
DN80	1.363	1.498	1.575	1.748
DN100	1.548	1.823	1.904	2.171



24V DC ELECTRIC ACTUATED THREADED BALL VALVES

SIZE	AISI 304		AISI 316	
	3 WAY L-PORT PRICE €	3 WAY T-PORT PRICE €	3 WAY L-PORT PRICE €	3 WAY T-PORT PRICE €
1/2"	248	254	264	273
3/4"	257	281	284	300
1"	289	306	322	336
1¼"	530	549	576	600
1½"	611	633	688	721
2"	831	860	971	1.019
2½"	1.422	1.492	1.505	1.588
3"	2.104	2.215	2.575	2.756



24V DC ELECTRIC ACTUATED FLANGED BALL VALVES

SIZE	AISI 304		AISI 316	
	2 PIECE PRICE €	3 PIECE PRICE €	2 PIECE PRICE €	3 PIECE PRICE €
DN15	312	310	343	341
DN20	330	341	387	359
DN25	361	382	289	417
DN32	446	461	523	553
DN40	663	714	763	783
DN50	740	804	879	864
DN65	1.005	1.096	1.231	1.216
DN80	1.371	1.506	1.583	1.756
DN100	1.557	1.832	1.913	2.180



STAINLESS STEEL BUTTERFLY VALVES

PNEUMATIC ACTUATED STAINLESS STEEL BUTTERFLY VALVE



SIZE (mm) PRICE €

33	
42	
48	
60	
76	
88	
114	

ASK FOR PRICE



STAINLESS STEEL BUTTERFLY VALVE



SIZE (mm) PRICE €

33	
42	
48	
60	
76	
88	
114	

ASK FOR PRICE



PNEUMATIC ACTUATOR ACCESSORIES

LIMIT SWITCH BOX

MODEL PRICE €

UAPL 210	50
----------	----

Body : Alüminyum
Koruma : IP67



EXPROOF LIMIT SWITCH BOX

MODEL PRICE €

UAPL 410	180
----------	-----



NAMUR SOLENOID VALVE

MODEL PRICE €

1/4" - 5/2 SINGLE COIL	40
1/4" - 3/2 SINGLE COIL	40
1/4" - 5/2 DOUBLE COIL	80

Body : Aluminum
Protection Class : IP67



EXPROOF NAMUR SOLENOID VALVE

MODEL PRICE €

1/4" - 5/2 SINGLE COIL	175
1/4" - 3/2 SINGLE COIL	175
1/4" - 5/2 DOUBLE COIL	280



LINEAR ELECTRO PNEUMATIC POSITIONER

MODEL PRICE €

U-EPL LINEAR 4-20mA	960
TS-600L LINEAR POSITIONER	1300
ASD-500 SMART POSITIONER	2100

Protection Class : IP67
Max. Feed Pressure : 7 Bars
ASK FOR PRICE FOR FEEDBACK MODEL



ROTARY ELECTRO PNEUMATIC POSITIONER

MODEL PRICE €

U-EPR ROTARY 4-20mA	960
ASD-501 SMART POSITIONER	2100

Protection Class : IP67
Max. Feed Pressure : 7 Bars
ASK FOR PRICE FOR FEEDBACK MODEL



VALVE - ACTUATOR CONNECTION PARTS

GEAR BOX

MODEL	CONNECTION PARTS	PRICE €
3270001	24.1	78
3270002	30.1	132
3270003	50.1	183
3270004	80.1	334



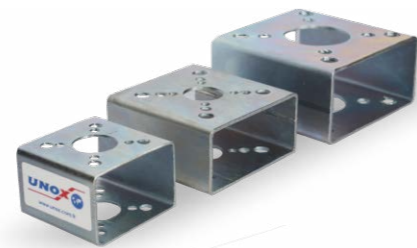
SEPERATION LEVER GEAR BOX

MODEL	CONNECTION PARTS	PRICE €
3270101	24.1	189
3270102	30.1	262
3270103	50.1	437
3270104	80.1	612

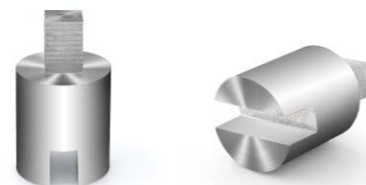


VALVE - ACTUATOR CONNECTION PARTS

MODEL	CONNECTION PARTS	PRICE €
152F05 001	F05	30
152F07 001	F07	50
152F10 001	F10	70



MODEL	CONNECTION PARTS	PRICE €
152F05 002	F05	40
152F07 002	F07	50
152F10 002	F10	110



REDUCTIONS

MODEL	CONNECTION PARTS	PRICE €
RED001...01	11X9 Reduction	10
RED001...02	14X9 Reduction	10
RED001...03	14X11 Reduction	10
RED001...04	17X11 Reduction	10
RED001...05	17X14 Reduction	10
RED001...06	22X14 Reduction	12
RED001...07	22X17 Reduction	12
RED001...08	27X17 Reduction	14
RED001...09	27X22 Reduction	14
RED001...10	36X27 Reduction	14



STEAM TRAPS



AIR



WATER



STEAM

STEAM TRAPS



BALL FLOAT THREADED STEAM TRAP

SIZE	MODEL	PRICE €
1/2"	UKS70D.01	408
3/4"	UKS70D.02	414
1"	UKS70D.03	443
1 1/4"	UKS70D.04	1356
1 1/2"	UKS70D.05	1463
2"	UKS70D.06	1700



Body : GGG 40.3 Cast Iron
 Cover : GGG 40.3 Cast Iron
 Max. Working Press. : 16 Bar
 Max. Working Temp. : 250°C
 Δp : 4.5 - 10 - 14 Bar

BALL FLOAT FLANGED STEAM TRAP

SIZE	MODEL	PRICE €
DN15	UKS70F.01	460
DN20	UKS70F.02	489
DN25	UKS70F.03	575
DN32	UKS70F.04	1544
DN40	UKS70F.05	1563
DN50	UKS70F.06	1925



Body : GGG 40.3 Cast Iron
 Cover : GGG 40.3 Cast Iron
 Max. Working Press. : 16 Bar
 Max. Working Temp. : 250°C
 Δp : 4.5 - 10 - 14 Bar

INVERTED BUCKET THREADED STEAM TRAP

SIZE	MODEL	PRICE €
1/2"	UTK.015D	189
3/4"	UTK.020D	200
1"	UTK.025D	262
1 1/4"	UTK.032D	323
1 1/2"	UTK.040D	454
2"	UTK.050D	534



Body : GGG 40.3 Cast Iron
 Cover : GGG 40.3 Cast Iron
 Max. Working Press. : 16 Bar
 Max. Working Temp. : 250°C
 Δp : 4.5 - 10 - 14 Bar

STEAM TRAPS



INVERTED BUCKET FLANGED STEAM TRAP

SIZE	MODEL	PRICE €
DN15	UTK.015F	214
DN20	UTK.020F	236
DN25	UTK.025F	301
DN32	UTK.032F	351
DN40	UTK.040F	487
DN50	UTK.050F	655



Body : GGG 40.3 Cast Iron
 Cover : GGG 40.3 Cast Iron
 Max. Working Press. : 16 Bar
 Max. Working Temp. : 250°C
 Δp : 4.5 - 10 - 14 Bar

AUTOMATIC AIR VENT FOR LIQUID SYSTEMS

THREADED			FLANGED		
SIZE	MODEL	PRICE €	SIZE	MODEL	PRICE €
1/2"	UKHA70D.01	385	DN15	UKHA70F.01	400
3/4"	UKHA70D.02	418	DN20	UKHA70F.02	430
1"	UKHA70D.03	440	DN25	UKHA70F.03	480



Body : GGG 40.3 Cast Iron
 Cover : GGG 40.3 Cast Iron
 Max. Working Press. : 16 Bar
 Max. Working Temp. : 250°C

AUTOMATIC CONDENSATE DRAIN FOR AIR SYSTEMS

THREADED			FLANGED		
SIZE	MODEL	PRICE €	SIZE	MODEL	PRICE €
1/2"	UKSA70D.01	430	DN15	UKSA70F.01	490
3/4"	UKSA70D.02	450	DN20	UKSA70F.02	520
1"	UKSA70D.03	480	DN25	UKSA70F.03	550



Body : GGG 40.3 Cast Iron
 Cover : GGG 40.3 Cast Iron
 Max. Working Press. : 16 Bar
 Max. Working Temp. : 250°C

STEAM TRAPS



THERMODYNAMIC THREADED STEAM TRAP

SIZE	MODEL	PRICE €
1/2"	UKT70D.01	186
3/4"	UKT70D.02	194
1"	UKT70D.03	204

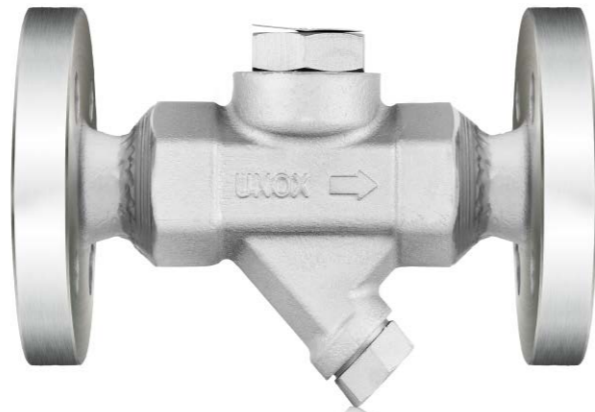


Body : Forged Steel
 Cover : Stainless Steel
 Strainer Screen : Stainless Steel
 Max. Working Pressure : 40 Bar
 Max. Working Temperature : 400°C
 Min. Operating Pressure : 0.3 Bar



THERMODYNAMIC FLANGED STEAM TRAP

SIZE	MODEL	PRICE €
DN15	UKT70F.01	304
DN20	UKT70F.02	316
DN25	UKT70F.03	354



Body : Forged Steel
 Cover : Stainless Steel
 Strainer Screen : Stainless Steel
 Maks. Working Pressure : 40 Bar
 Maks. Working Temperature : 400°C
 Min. Operating Pressure : 0.3 Bar



STAINLESS STEEL THERMODYNAMIC STEAM TRAP

SIZE	MODEL	PRICE €
1/2"	UKT77D.01	330
3/4"	UKT77D.02	363
1"	UKT77D.03	462



Body : ASTM A743 GrCA40F
 Cover : AISI 316 Stainless Steel
 Strainer Screen : 420 Stainless Steel
 Maks. Working Press. : 40 Bar
 Maks. Working Temp. : 400°C
 Min. Operating Press. : 0.3 Bar
 Connection : BSP or NPT



STEAM TRAPS



THERMOSTATIC STEAM TRAP

THREADED			FLANGED		
SIZE	MODEL	PRICE €	SIZE	MODEL	PRICE €
1/2"	UKK.4101	180	DN15	UKK.4201	380
3/4"	UKK.4102	185	DN20	UKK.4202	400



Body and Cover : Stainless Steel
 Thermostatic Capsule : HASTELLOY
 Max. Working Pressure : 45 Bar
 Max. Working Temperature : 250°C



SAMPLING CONTAINER

SIZE	MODEL	PRICE €
DN80	UOK	880



Body : AISI 316 Stainless Steel
 Serpentine : 1/2" AISI 316 L Stainless Steel
 Serpentine Nominal Pressure : PN40
 Cold Water Input-Output : 1/2"
 Body Nominal Pressure : PN16



AUTOMATIC BLOWDOWN SYSTEM

SIZE	MODEL	PRICE €
DN40	UKDBS	1210

BLOWDOWN VALVE
 DN40, PN40 STAINLESS STEEL CAST
 SWITCH BOX
 SINGLE ACTING (Spring Return Pneumatic Actuator)
 3/2 DIRECTION VALVE
 TIMER



STEAM TRAPS



BRASS VACUUM BREAKER

SIZE	MODEL	PRICE €
1/2"	UKV70D	96

Body : Brass
 Interior : Stainless Steel
 Max. Working Press. : 16 Bar
 Max. Working Temp. : 260°C



STAINLESS STEEL VACUUM BREAKER

SIZE	MODEL	PRICE €
1/2"	UKV70DP	102

Body : Stainless Steel
 Interior : Stainless Steel
 Max. Working Press. : 25 Bar
 Max. Working Temp. : 400°C



THREADED FLOW INDICATOR

SIZE	MODEL	PRICE €
1/2"	2510015	58
3/4"	2510020	60
1"	2510025	67
1 1/4"	2510032	82
1 1/2"	2510040	90
2"	2510050	109



FLANGED FLOW INDICATOR

SIZE	MODEL	PRICE €
DN15	2520015	62
DN20	2520020	72
DN25	2520025	80
DN32	2520032	97
DN40	2520040	115
DN50	2520050	142
DN65	2520065	206
DN80	2520080	234
DN100	2520100	382
DN125	2520125	434
DN150	2520150	748
DN200	2520200	1.496



Body : GGG-40
 Cover : GGG-40
 Max. Working Press. : 16 Bar
 Glass : Tempered Glass 150°C
 Sealing : PTFE



SAFETY VALVES

PROPORTIONAL LIFT SAFETY VALVE

MODEL	SIZE	CAST IRON	DUCTILO IRON
		PRICE €	PRICE €
UOK-10	DN25	327	369
	DN32	337	408
	DN40	385	491
	DN50	476	585
	DN65	652	783
	DN80	877	1.077
	DN100	1.339	1.610

Body : GG-25 / GGG-40
 Cover : GG-25 / GGG-40
 Spring : AISI 302
 Disc : AISI 304
 Shaft : AISI 304
 Seat : AISI 304



FULL LIFT SAFETY VALVE

MODEL	SIZE	PRICE €
UTK-10	DN25 / 40	438
	DN32 / 50	501
	DN40 / 65	568
	DN50 / 80	701
	DN65 / 100	971
	DN80 / 125	133
	DN100 / 150	2.182

Body : GGG-40
 Cover : GGG-40
 Spring : AISI 302
 Disc : AISI 304
 Shaft : AISI 304
 Seat : AISI 304



AISI304 STAINLESS STEEL SAFETY VALVE

MODEL	40 BAR THREADED		HIGH PERFORMANCE 130 BAR		40 BAR FLANGED	
	SIZE	PRICE €	SIZE	FİYAT€	SIZE	PRICE €
UEV	1/2"	543	1/2" - 1"	700	DN15	1.114
	3/4"	600	3/4" - 1"	771	DN20	1.250
	1"	714	1" - 1"	914	DN25	1.429
	1 1/4"	900			DN32	1.686
	1 1/2"	1.114			DN40	1.971
	2"	2.000			DN50	2.929



Ask for AISI316 Stainless Steel.

STEAM TRAP SPARE PARTS AND ACCESSORIES

LEVEL AND FLOW

SPARE PARTS AND ACCESSORIES

MODEL	UKS-70D BODY (THREADED)		UKS-70F BODY (FLANGED)	
	SIZE	PRICE €	SIZE	PRICE €
UKS-70D and UKS-70F BODY	1/2"	100	DN15	180
	3/4"	100	DN20	180
	1"	110	DN25	200
	1 1/4"	270	DN32	660
	1 1/2"	270	DN40	660
	2"	450	DN50	720

MODEL	UKS-70D COVER (THREADED)		UKS-70F COVER (FLANGED)	
	SIZE	PRICE €	SIZE	PRICE €
UKS-70D and UKS-70F COVER	1/2"	80	DN15	150
	3/4"	80	DN20	150
	1"	90	DN25	180
	1 1/4"	300	DN32	420
	1 1/2"	300	DN40	420
	2"	420	DN50	480

MODEL	UKS-70D COVER SEAT (THREADED)		UKS-70F COVER SEAT (FLANGED)	
	SIZE	PRICE €	SIZE	PRICE €
UKS-70D and UKS-70F COVER SEAT	1/2"	10	DN15	10
	3/4"	10	DN20	10
	1"	10	DN25	10
	1 1/4"	40	DN32	40
	1 1/2"	40	DN40	40
	2"	40	DN50	40

MODEL	UKS-70D FLOAT (THREADED)		UKS-70F FLOAT (FLANGED)	
	SIZE	PRICE €	SIZE	PRICE €
UKS-70D and UKS-70F FLOAT	1/2"	32	DN15	32
	3/4"	35	DN20	35
	1"	35	DN25	35
	1 1/4"	60	DN32	60
	1 1/2"	60	DN40	60
	2"	60	DN50	60

MODEL	UKS-70D CAPSULE (THREADED)		UKS-70F CAPSULE (FLANGED)	
	SIZE	PRICE €	SIZE	PRICE €
UKS-70D and UKS-70F CAPSULE	1/2"	45	DN15	45
	3/4"	45	DN20	45
	1"	45	DN25	45
	1 1/4"	45	DN32	45
	1 1/2"	45	DN40	45
	2"	45	DN50	45

REFLEX LEVEL GAUGE

SIZE (mm)	2215001		2216001	
	PN16	PN40	PN16	PN40
300	493		947	
310	533		1.006	
340	572		1.085	
350	572		1.125	
370	612		1.381	
400	691	ASK FOR PRICE	1.579	
440	730		1.815	ASK FOR PRICE
460	770		2.072	
500	789		2.763	
510	829		3.453	
575	888		4.933	
635	908			

Body : GG-25 Cast Iron
 Connection : DN20 PN16 Flanged
 Max. Working Pressure : 16 Bar (PN40 Optional)
 Max. Working Temperature : 250°C



MAGNETIC LEVEL GAUGE / BOILER TYPE

SIZE (mm)	PRICE €	SIZE (mm)	PRICE €
300-310	395	1100	721
340-350	434	1200	749
370	454	1300	769
400	479	1400	812
440-450	497	1500	842
500-510	521	1600	867
550	537	1700	891
600	553	1800	929
695-700	592	1900	1.005
750	627	2000	1.049
800	643	2500	1.208
850	671	3000	1.448
900	699	4000	1.807
1000	689		

Body : Stainless Steel
 Connection : DN20 PN16 Flanged
 Max. Working Pressure : 16 Bar
 Max. Working Temperature : 200°C



NOTE: ASK THE PRICE FOR CONTACT OUTPUT APPLICATION.

LEVEL AND FLOW

STAINLESS STEEL MINI LEVEL SWITCH

SIZE	MODEL	PRICE €
1/2"	UPMS-8	120

Pipe and Float : AISI 304 Stainless Steel
 Working Pressure : 5 Bar
 Working Temp. : -10°C...+150°C
 Supply Voltage : 220V AC
 Connection : 1/2" Out Threaded
 Minimum Density : 0.7 GR/CM3
 Installation Method : Horizontal
 Electric Connection : Socket



STAINLESS STEEL LEVEL TANK FLOAT

SIZE	MODEL	PRICE €
1/2"	2710015	160
3/4"	2710020	170
1"	2710025	180

Float Diameter : 150 mm
 Connection : Threaded
 Working Pressure : 5 Bar
 Working Temperature : -10°C...+150°C



FLOW SWITCH

SIZE	MODEL	PRICE €
1"	UAKS 16	80

Body : Brass
 Plate : AISI 304 Stainless Steel
 Feed : All Voltages
 Applicable Line Diameter : 1" - 6"



LEVEL AND FLOW

STEAM SEPERATOR



WELDED / THREADED			FLANGED (PN16)		
SIZE	MODEL	PRICE €	SIZE	MODEL	PRICE €
1/2"	2430015	100	DN15	2410015	121
3/4"	2430020	114	DN20	2410020	143
1"	2430025	129	DN25	2410025	157
1¼"	2430032	157	DN32	2410032	200
1½"	2430040	186	DN40	2410040	229
2"	2430050	214	DN50	2410050	286
2½"	2430065	286	DN65	2410065	343
3"	2430080	400	DN80	2410080	514
4"	2430100	500	DN100	2410100	571
5"	2430125	714	DN125	2410125	857
6"	2430150	1.000	DN150	2410150	1.286
8"	2430200	1.429	DN200	2410200	1.714
10"	2430250	2.857	DN250	2410250	3.429
12"	2430300	4.286	DN300	2410300	5.000

LEVEL AND FLOW

2 WAY MANOMETER TAP / VALVE

SIZE	WAY	PRICE €
1/2"	2 WAY	200

Adjustment Nut : DIN 16283
 Hand Control : Hard Plastik
 Salmastra : Graphite
 Body : 1,4571 (316Ti) Stainless Steel
 Pressure Class : PN40
 Connection : G1/2 Threaded (Male-Female)
 Working Temperature : 300°C



3 WAY MANOMETER TAP / VALVE

SIZE	WAY	PRICE €
1/2"	3 WAY	400

Adjustment Nut : DIN 16283
 Hand Control : Hard Plastik
 Salmastra : Graphite
 Body : 1,4571 (316Ti) Stainless Steel
 Pressure Class : PN40
 Connection : G1/2 Threaded (Male-Female)
 Working Temperature : 300°C

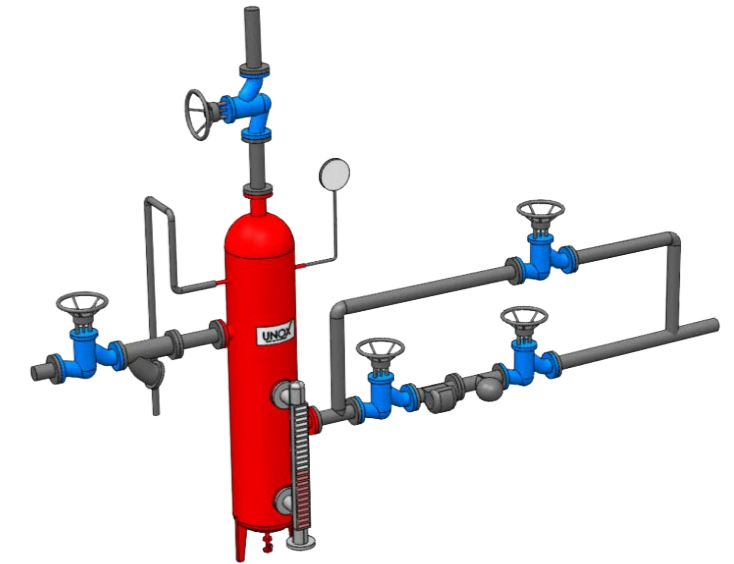


FLASH STEAM RECOVERY SYSTEM

FLASH STEAM RECOVERY SYSTEM

Body : ST37 Carbon Steel
 Working Pressure : 10 Bar
 Working Temperature : Max. 150°C
 Connection : PN10/PN16

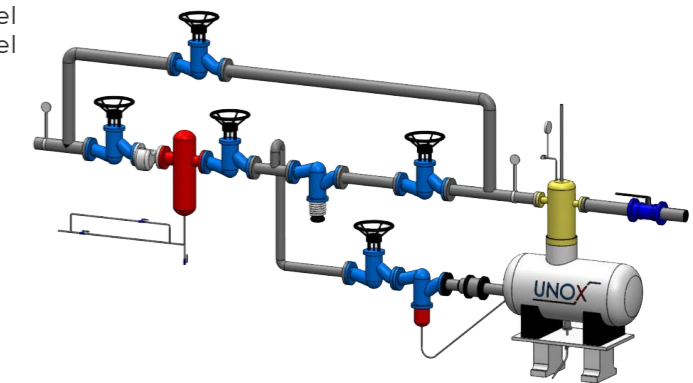
It saves fuel and increases system efficiency.
 Please contact us for information and prices.



DEAGGER SYSTEM

Body : ST37 Carbon Steel / Stainless Steel
 Duct : ST37 Carbon Steel / Stainless Steel
 Working Pressure : 10 Bar
 Working Temperature : Max. 145°C

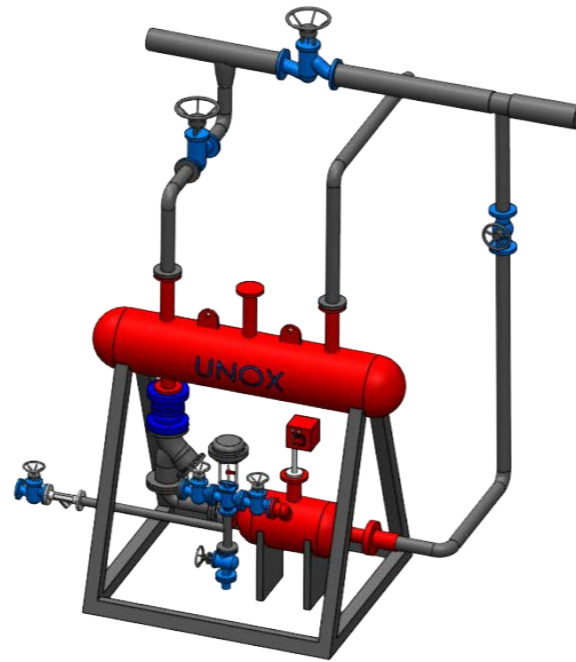
It saves fuel and increases system efficiency.
 Please contact us for information and prices.



FLASH STEAM RECOVERY SYSTEM

CONDENSED WATER PUMP

Duct and Tank : Stainless Steel / ST37 Carbon Steel
 Working Pressure : 10 Bar
 Working Temperature : Max. 180°C
 Feed Energy : 220V AC / 24V DC
 Feed Air : 4 Bar

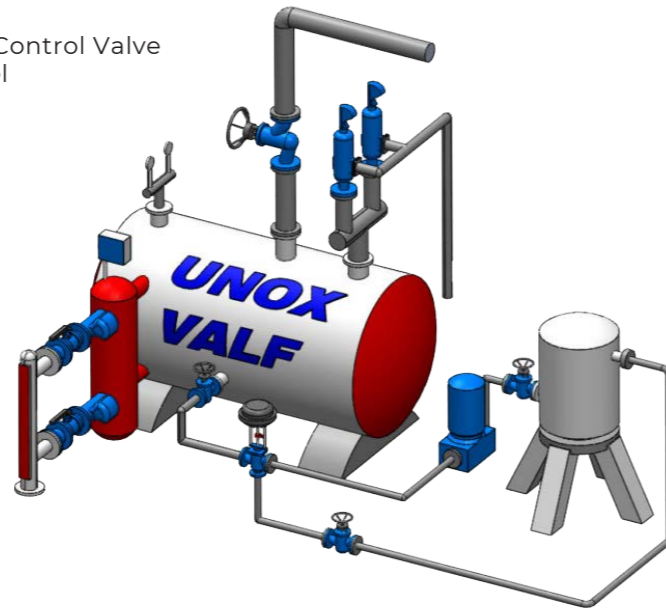


It saves fuel and increases system efficiency.
 Please contact us for information and prices.



BOILER WATER PROPORTIONAL FEEDING SYSTEM

Level Control Valve : UNOX 33609 Proportional 3 Way Control Valve
 Duct and Tank : Stainless Steel / ST37 Carbon Steel
 Working Pressure : 25 Bar
 Working Temperature : Max. 225°C
 Feed Energy : 220V AC / 24V DC
 Level Electrodes : EA20 Fantini Cosmi
 Level Control Device : E03M Fantini Cosmi



It saves fuel and increases system efficiency.
 Please contact us for information and prices.



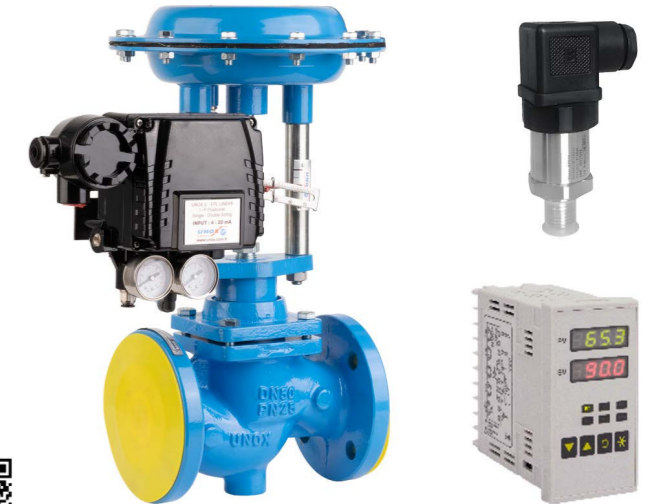
PID CONTROL SYSTEMS

PNEUMATIC PRESSURE PID CONTROL SYSTEM

PRCV-P

- Pneumatic Control Valve
- E-49 Control Panle
- Unox Pressure Transmitter
- High control sensitivity
- Easy installation and adjustment
- Integration with SCADA and PLC systems
- High efficiency

Contact us for price information.



PNEUMATIC TEMPERATURE PID CONTROL SYSTEM

TCV-P

- Pneumatic Control Valve For Hot Oil
- E-49 Control Panle
- Unox PT100
- High control sensitivity
- Easy installation and adjustment
- Integration with SCADA and PLC systems
- High efficiency

Contact us for price information.



PNEUMATIC FLOW PID CONTROL SYSTEMS

FCV-P

- Pneumatic Control Valve
- E-49 Control Panle
- Unox Electromagnetic Flow Meter
- High control sensitivity
- Easy installation and adjustment
- Integration with SCADA and PLC systems
- High efficiency

Contact us for price information.



PID CONTROL SYSTEMS

ELECTRIC PRESSURE PID CONTROL SYSTEMS

PRCV-M

- Motorized Proportional Control Valve
- E-49 Control Panle
- Unox Pressure Transmitter
- High control sensitivity
- Easy installation and adjustment
- Integration with SCADA and PLC systems
- High efficiency

Contact us for price information.



ELECTRIC TEMPERATURE PID CONTROL SYSTEMS

TCV-M

- Motorized Proportional Control Valve For Hot Oil
- E-49 Control Panle
- Unox PT100
- High control sensitivity
- Easy installation and adjustment
- Integration with SCADA and PLC systems
- High efficiency

Contact us for price information.



ELECTRIC FLOW PID CONTROL SYSTEMS

FCV-M

- Motorized Proportional Control Valve
- E-49 Control Panle
- Unox Electromagnetic Flow Meter
- High control sensitivity
- Easy installation and adjustment
- Integration with SCADA and PLC systems
- High efficiency

Contact us for price information.



SINGLE ACTING PNEUMATIC PISTON VALVE



ANGLE SEAT VALVE THREADED

MODEL	SIZE	PRICE €	
		63MM ACTUATOR	90MM ACTUATOR
UPD	1/2"	90	
	3/4"	110	
	1"	130	
	1 1/4"	210	310
	1 1/2"	260	330
	2"	330	400
	2 1/2"		610

Body : Stainless Steel
 Working Temperature : 180°C
 Working Pressure : PN16
 Feed Pressure : 3-8 Bar
 Connection : Threaded

ASK THE PRICE FOR DOUBLE ACTING AND NORMALLY OPEN VALVES

NOTE: IN STEAM APPLICATIONS, PLEASE SELECT 90MM ACTUATOR FOR 1 1/4" AND OVER DIMENSIONS. YOU CAN PREFER 63MM ACTUATOR IN LIQUID APPLICATIONS.



ANGLE SEAT VALVE FLANGED

MODEL	SIZE	PRICE €	
		63MM ACTUATOR	90MM ACTUATOR
UPF	DN15	220	
	DN20	250	
	DN25	315	
	DN32	440	550
	DN40	480	640
	DN50	760	660
	DN65		900

Body : Stainless Steel
 Working Temperature : 180°C
 Working Pressure : PN16
 Feed Pressure : 3-8 Bar
 Connection : Threaded

ASK THE PRICE FOR DOUBLE ACTING AND NORMALLY OPEN VALVES

NOTE: IN STEAM APPLICATIONS, PLEASE SELECT 90MM ACTUATOR FOR 1 1/4" AND OVER DIMENSIONS. YOU CAN PREFER 63MM ACTUATOR IN LIQUID APPLICATIONS.





CONTROL VALVES



PNEUMATIC CONTROL VALVES

PNEUMATIC BLOWDOWN VALVE - 33602



SIZE (DN)	KVS (m ³ /h)	PRICE €
25	10	1100
32	16	1210
40	25	1300
50	40	1360

Body	: GGG40.3 Ductile Iron
Pressure Class	: PN16 - PN25
Safety Function	: Normally Closed - Normally Open
Sealing Class	: CLASS VI (PTFE Soft Sealing)
Characteristic	: On - Off
Neck Sealing	: CLASS VI - V Packet
Max. Working Temperature	: 220°C
Flange Connection	: DIN 1092-2 (PN16)

ASK THE PRICE FOR ADDITIONAL 1/4" 3/2 SOLENOID VALVE ON ACTUATOR.
ASK THE PRICE FOR DIGITAL ON-OFF TIMER.
ASK THE PRICE FOR ADDITIONAL LIMIT SWITCH.

PNEUMATIC CONTROL VALVES

2 WAY PNEUMATIC ON-OFF CONTROL VALVE - 33603



BASIC (STANDART) FEATURES:

Body : GGG-40.3 Ductile Iron
 Pressure Class : PN25
 Safety Function : Normally Closed - Normally Open
 Sealing Class : CLASS VI (PTFE Soft Sealing)
 Characteristic : On - Off
 Neck Sealing : CLASS VI - V Packet
 Max. Working Temp. : 220°C
 Flange Connection : DIN 1092-2 (PN16)

ACCESSORIES:

Ask for Limit Switch addition.
 Ask for Hand Control.
 Ask for Solenoid Valve addition.



SIZE (DN)	KVS (m ³ /h)	Actuator (cm ²)	Delta P (Barg)	PRICE €
15	4	240	14	583
20	6.3	240	14	616
25	10	240	14	644
32	16	240	12	814
40	25	240	11	880
50	35	240	10	957
65	60	350	9	1529
80	80	350	10	1595
100	125	Piston Type	10	2750
125	200	Piston Type	9	ASK FOR PRICE
150	260	Piston Type	8	ASK FOR PRICE

DN125 and DN150 body material is PN16 Cast Iron.
 Ask for different body materials.

PNEUMATIC CONTROL VALVES

3 WAY PNEUMATIC ON-OFF CONTROL VALVE - 33610



BASIC (STANDART) FEATURES:

Body : GGG40.3 Ductile Iron
 Pressure Class : PN25
 Function : Mixing - Diverting
 Sealing Class : CLASS VI (PTFE Soft Sealing)
 Characteristic : On - Off
 Neck Sealing : CLASS VI - V Packet
 Max. Working Temp. : 220°C
 Flange Connection : DIN 1092-2 (PN16)

ACCESSORIES:

Ask for Limit Switch addition.
 Ask for Hand Control.
 Ask for Solenoid Valve addition.



SIZE (DN)	KVS (m ³ /h)	Actuator (cm ²)	Delta P (Barg)	PRICE €
15	4	240	14	946
20	6	240	14	990
25	10	240	14	1012
32	16	240	12	1463
40	25	240	11	1562
50	35	240	10	1672
65	60	350	9	2750
80	80	350	10	2871
100	125	Piston Type	10	4312
125	200	Piston Type	9	ASK FOR PRICE
150	260	Piston Type	8	ASK FOR PRICE

DN125 and DN150 body material is PN16 Cast Iron.
 Ask for different body materials.

PNEUMATIC CONTROL VALVES

2 WAY PNEUMATIC PROPORTIONAL CONTROL VALVE - 33604



BASIC (STANDART) FEATURES:

Body	: GGG40.3 Ductile Iron
Pressure Class	: PN25
Safety Function	: Normally Closed - Normally Open
Sealing Class	: CLASS VI (PTFE Soft Sealing)
Characteristic	: Proportional
Neck Sealing	: CLASS VI - V Packet
Max. Working Temp.	: 220°C
Flange Connection	: DIN 1092-2 (PN16)

Positioner not included.

ACCESSORIES:

Ask for Limit Switch addition.
Ask for Hand Control.



Signal Pressure (Bar)	0,2 - 1	0,4 - 2	0,6 - 3	1,4 - 2,3
Supply Air Pressure (Bar)	1,8	2,6	3,5	2,8

SIZE (DN)	KVS (m³/h)	Actuator (cm²)	PRICE €			
15	4	240	1300	1310	1320	
			14 Barg	14 Barg	14 Barg	
20	6.3	240	1340	1380	1420	
			5,5 Barg	14 Barg	14 Barg	
25	10	240	1410	1420	1480	
			5,4 Barg	14 Barg	14 Barg	
32	16	240	1450	1470	1510	
			3 Barg	8,5 Barg	14 Barg	
40	30	240	1490	1520	1570	1610
			1,5 Barg	5,5 Barg	9 Barg	9 Barg
		350	1610	1630	1650	1670
			3,3 Barg	8,7 Barg	14 Barg	14 Barg
50	40	240	1500	1530	1580	1690
			1,2 Barg	4,8 Barg	7 Barg	8,5 Barg
		350	1670	1690	1710	1720
			1,7 Barg	5,2 Barg	8,8 Barg	14 Barg
65	60	240	1730	1750	1800	1830
			2,4 Barg	4,2 Barg	5,3 Barg	8 Barg
		350	1800	1810	1850	1900
			1 Barg	2,9 Barg	4,7 Barg	8 Barg
80	80	350	1920	2000	2040	2060
			1 Barg	3 Barg	3 Barg	3 Barg
100	160	700	3780	3800	3840	
			2,5 Barg	4,2 Barg	11 Barg	

DN125 and DN150 body material is PN16 Cast Iron.
Ask for different body materials.

PNEUMATIC CONTROL VALVES

3 WAY PNEUMATIC PROPORTIONAL CONTROL VALVE - 33611



BASIC (STANDART) FEATURES:

Body	: GGG40.3 Ductile Iron
Pressure Class	: PN25
Function	: Mixing - Diverting
Sealing Class	: CLASS VI (PTFE Soft Sealing)
Characteristic	: Proportional
Neck Sealing	: CLASS VI - V Packet
Max. Working Temp.	: 220°C
Flange Connection	: DIN 1092-2 (PN16)

Positioner not included.

ACCESSORIES:

Ask for Limit Switch addition.
Ask for Hand Control.
Ask for Carbon Steel and Stainless Steel body material.



Signal Pressure (Bar)	0,2 - 1	0,4 - 2	0,6 - 3	1,4 - 2,3
Supply Air Pressure (Bar)	1,8	2,6	3,5	2,8

SIZE (DN)	KVS (m³/h)	Actuator (cm²)	PRICE €			
15	4	240	1940	1960	1980	
			5,4 Barg	14 Barg	14 Barg	
20	6.3	240	1960	1970	2010	
			5,3 Barg	14 Barg	14 Barg	
25	10	240	2000	2010	2030	
			5,2 Barg	14 Barg	14 Barg	
32	16	240	2580	2600	2620	
			5,2 Barg	8,5 Barg	14 Barg	
40	30	240	2630	2640	2670	2690
			5 Barg	5,5 Barg	9 Barg	9 Barg
		350	2720	2730	2740	2750
			3,3 Barg	8 Barg	14 Barg	14 Barg
50	40	240	2750	2780	2790	2910
			2 Barg	5 Barg	6,4 Barg	8 Barg
		350	2850	2860	2890	2950
			1,7 Barg	5,2 Barg	8,8 Barg	14 Barg
65	60	350	2970	3010	3030	
			2,8 Barg	4,8 Barg	13 Barg	
80	80	350	3610	3630	3660	3690
			1 Barg	3 Barg	3 Barg	3 Barg
100	160	Piston Type	4730	4760	4800	
			2,5 Barg	4,2 Barg	11 Barg	

DN125 and DN150 body material is PN16 Cast Iron.
Ask for different body materials.

PNEUMATIC CONTROL VALVES

2 WAY PNEUMATIC ON-OFF CONTROL VALVE FOR HOT OIL - 33612



BASIC (STANDART) FEATURES:

- Body : GGG40.3 Ductile Iron
- Pressure Class : PN25
- Safety Function : Normally Closed - Normally Open
- Sealing Class : CLASS IV (Metal to Metal)
- Characteristic : On - Off
- Neck Sealing : CLASS VI - V Packet Metal Bellows add.
- Max. Working Temp. : 350°C
- Flange Connection : DIN 1092-2 (PN16)

ACCESSORIES:

- Ask for Limit Switch addition.
- Ask for Hand Control.



SIZE (DN)	KVS (m³/h)	Actuator (cm²)	Delta P (Barg)	PRICE €
15	4	240	14	1310
20	6.3	240	14	1380
25	10	240	14	1410
32	16	240	12	1430
40	25	240	11	1520
50	35	240	10	1560
65	60	350	9	1710
80	80	350	10	1930
100	160	Piston Type	9.2	3410

DN125 and DN150 body material is PN16 Cast Iron.
Ask for different body materials.

PNEUMATIC CONTROL VALVES

3 WAY PNEUMATIC ON-OFF CONTROL VALVE FOR HOT OIL - 33613



BASIC (STANDART) FEATURES:

- Body : GGG40.3 Ductile Iron
- Pressure Class : PN25
- Function : Mixing - Diverting
- Sealing Class : CLASS IV (Metal to Metal)
- Characteristic : On - Off
- Neck Sealing : CLASS VI - V Packet Metal Bellows add.
- Max. Working Temp. : 350°C
- Flange Connection : DIN 1092-2 (PN16)

ACCESSORIES:

- Ask for Limit Switch addition.
- Ask for Hand Control.



SIZE (DN)	KVS (m³/h)	Actuator (cm²)	Delta P (Barg)	PRICE €
15	4	240	14	1790
20	6.3	240	14	1800
25	10	240	14	1830
32	16	240	12	2420
40	25	240	11	2620
50	35	240	10	2680
65	60	350	9	2790
80	80	350	10	3380
100	160	Piston Type	9.2	5150

DN125 and DN150 body material is PN16 Cast Iron.
Ask for different body materials.

PNEUMATIC CONTROL VALVES

2 WAY PNEUMATIC PROPORTIONAL CONTROL VALVE FOR HOT OIL - 33607



BASIC (STANDART) FEATURES:

Body	: GGG-40.3 Ductile Iron
Pressure Class	: PN25
Safety Function	: Normally Closed - Normally Open
Sealing Class	: CLASS IV (Metal to Metal)
Characteristic	: Proportional
Neck Sealing	: CLASS VI - V Packet Metal Bellows additional
Max. Working Temp.	: 350°C
Flange Connection	: DIN 1092-2 (PN16)

Positioner not included.

ACCESSORIES:

Ask for Limit Switch addition.
Ask for Hand Control.



Signal Pressure (Bar)	0,2 - 1	0,4 - 2	0,6 - 3	1,4 - 2,3
Supply Air Pressure (Bar)	1,8	2,6	3,5	2,8

SIZE (DN)	KVS (m ³ /h)	Actuator (cm ²)	PRICE €			
15	4	240	1700	1720	1740	
			5,4 Barg	14 Barg	14 Barg	
20	6.3	240	1750	1800	1820	
			5,3 Barg	14 Barg	14 Barg	
25	10	240	1840	1870	1890	
			5,2 Barg	14 Barg	14 Barg	
32	16	240	1900	1910	1920	
			5,2 Barg	8,5 Barg	14 Barg	
40	30	240	1910	1940	1980	2020
			5 Barg	5,5 Barg	9 Barg	9 Barg
		350	2040	2070	2080	2100
			3,3 Barg	8 Barg	14 Barg	14 Barg
		240	2070	2080	2090	2130
			2 Barg	5 Barg	6,4 Barg	8 Barg
350	2090	2120	2340	2360		
	1,7 Barg	5,2 Barg	8,8 Barg	14 Barg		
65	60	350	2350	2370	2440	
			2,8 Barg	4,8 Barg	13 Barg	
80	80	350	2440	2460	2470	2500
			1 Barg	3 Barg	3 Barg	3 Barg
100	160	350	4170	4180	4260	
			2,5 Barg	4,2 Barg	11 Barg	

DN125 and DN150 body material is PN16 Cast Iron.
Ask for different body materials.

PNEUMATIC CONTROL VALVES

3 WAY PNEUMATIC PROPORTIONAL CONTROL VALVE FOR HOT OIL - 33614



BASIC (STANDART) FEATURES:

Body	: GGG-40.3 Ductile Iron
Pressure Class	: PN25
Function	: Mixing - Diverting
Sealing Class	: CLASS IV (Metal to Metal)
Characteristic	: Proportional
Neck Sealing	: CLASS VI - V Packet Metal Bellows add.
Max. Working Temp.	: 350°C
Flange Connection	: DIN 1092-2 (PN16)

Positioner not included.

ACCESSORIES:

Ask for Limit Switch addition.
Ask for Hand Control.



Signal Pressure (Bar)	0,2 - 1	0,4 - 2	0,6 - 3	1,4 - 2,3
Supply Air Pressure (Bar)	1,8	2,6	3,5	2,8

SIZE (DN)	KVS (m ³ /h)	Actuator (cm ²)	PRICE €			
15	4	240	2500	2540	2560	
			5,4 Barg	14 Barg	14 Barg	
20	6.3	240	2550	2570	2580	
			5,3 Barg	14 Barg	14 Barg	
25	10	240	2580	2590	2610	
			5,2 Barg	14 Barg	14 Barg	
32	16	240	3350	3360	3390	
			5,2 Barg	8,5 Barg	14 Barg	
40	30	240	3360	3390	3410	3440
			5 Barg	5,5 Barg	9 Barg	9 Barg
		350	3430	3440	3460	3490
			3,3 Barg	8 Barg	14 Barg	14 Barg
		240	3470	3500	3510	3520
			2 Barg	5 Barg	6,4 Barg	8 Barg
350	3570	3600	3630	3670		
	1,7 Barg	5,2 Barg	8,8 Barg	14 Barg		
65	60	350	3720	3760	3780	
			2,8 Barg	4,8 Barg	13 Barg	
80	80	350	4740	4780	4830	4840
			1 Barg	3 Barg	3 Barg	3 Barg
100	160	350	6660	6670	6690	
			2,5 Barg	4,2 Barg	11 Barg	

DN125 and DN150 body material is PN16 Cast Iron.
Ask for different body materials.

MOTORIZED CONTROL VALVES

2 WAY MOTORIZED ON-OFF CONTROL VALVE - 33605



BASIC (STANDART) FEATURES:

Body	: GGG-40.3 Ductile Iron
Pressure Class	: PN25
Safety Function	: Normally Closed - Normally Open
Sealing Class	: CLASS VI (PTFE Soft Sealing)
Characteristic	: On - Off
Neck Sealing	: CLASS VI - V Packet
Max. Working Temp.	: 220°C
Flange Connection	: DIN 1092-2 (PN16)
Supply	: 220V AC / 24V DC
Protect Class	: IP54...67

Maintains its position when the power is cut off.

ACCESSORIES:

- Ask for Limit Switch addition.
- Ask for 0-1 Kohm potentiometer addition.
- Ask for 4-20mA - 0-10 V DC Proportional Control and Feedback signal.
- Ask for high ΔP's.
- Ask for High Temperature and Special Applications.



SIZE (DN)	KVS (m³/h)	ΔP (Bar)	Supply Voltage	Control Signal	PRICE €
15	4	14	220 V AC	ON-OFF	1936
20	6.3	14	220 V AC	ON-OFF	1991
25	10	14	220 V AC	ON-OFF	2024
32	16	14	220 V AC	ON-OFF	2574
40	30	14	220 V AC	ON-OFF	2662
50	40	13	220 V AC	ON-OFF	2775
65	60	11	220 V AC	ON-OFF	3468
80	80	6	220 V AC	ON-OFF	4284
100	160	6	220 V AC	ON-OFF	5640
125	200	5	220 V AC	ON-OFF	7618
150	260	3.8	220 V AC	ON-OFF	8365

DN125 and DN150 body material is PN16 Cast Iron.
Ask for different body materials.

MOTORIZED CONTROL VALVES

3 WAY MOTORIZED ON-OFF CONTROL VALVE - 33608



BASIC (STANDART) FEATURES:

Body	: GGG-40.3 Ductile Iron
Pressure Class	: PN25
Function	: Mixing - Diverting
Sealing Class	: CLASS VI (PTFE Soft Sealing)
Characteristic	: On - Off
Neck Sealing	: CLASS VI - V Packet
Max. Working Temp.	: 220°C
Flange Connection	: DIN 1092-2 (PN16)
Supply	: 220V AC / 24V DC
Protect Class	: IP54...67

Maintains its position when the power is cut off.

ACCESSORIES:

- Ask for Limit Switch addition.
- Ask for 0-1 Kohm potentiometer addition.
- Ask for 4-20mA - 0-10 V DC Proportional Control and Feedback signal.
- Ask for high ΔP's.
- Ask for High Temperature and Special Applications.



SIZE (DN)	KVS (m³/h)	ΔP (Bar)	Supply Voltage	Control Signal	PRICE €
15	4	14	220 V AC	ON-OFF	3175
20	6.3	14	220 V AC	ON-OFF	3230
25	10	14	220 V AC	ON-OFF	3260
32	16	14	220 V AC	ON-OFF	3600
40	30	14	220 V AC	ON-OFF	3690
50	40	13	220 V AC	ON-OFF	3780
65	60	11	220 V AC	ON-OFF	4960
80	80	6	220 V AC	ON-OFF	5150
100	160	6	220 V AC	ON-OFF	6280
125	200	5	220 V AC	ON-OFF	
150	260	3.8	220 V AC	ON-OFF	

DN125 and DN150 body material is PN16 Cast Iron.
Ask for different body materials.

ASK FOR PRICE

MOTORIZED CONTROL VALVES

2 WAY MOTORIZED PROPORTIONAL CONTROL VALVE - 33617



BASIC (STANDART) FEATURES:

Body	: GGG-40.3 Ductile Iron
Pressure Class	: PN25
Safety Function	: Normally Closed - Normally Open
Sealing Class	: CLASS VI (PTFE Soft Sealing)
Characteristic	: Proportional
Neck Sealing	: CLASS VI - V Packet
Max. Working Temp.	: 220°C
Flange Connection	: DIN 1092-2 (PN16)
Supply	: 220V AC / 24V DC
Protect Class	: IP54...67
Control Signal	: 4-20mA - 0-10 VDC
Feedback Signal	: 4-20mA - 0-10 VDC

Maintains its position when the power is cut off.

ACCESSORIES:

Ask for Limit Switch addition.
Ask for high ΔP's.
Ask for High Temperature and Special Applications.



4-20 mA / 0-10 V DC

SIZE (DN)	KVS (m³/h)	ΔP (Bar)	Supply Voltage	Control Signal	PRICE €
15	4	14	220 V AC	4-20 mA	2130
20	6.3	14	220 V AC	4-20 mA	2145
25	10	14	220 V AC	4-20 mA	2160
32	16	14	220 V AC	4-20 mA	2880
40	30	14	220 V AC	4-20 mA	2940
50	40	13	220 V AC	4-20 mA	2990
65	60	11	220 V AC	4-20 mA	3900
80	80	6	220 V AC	4-20 mA	5275
100	160	6	220 V AC	4-20 mA	7315
125	200	5	220 V AC	4-20 mA	9090
150	260	3.8	220 V AC	4-20 mA	10140

DN125 and DN150 body material is PN16 Cast Iron.
Ask for different body materials.

MOTORIZED CONTROL VALVES

3 WAY MOTORIZED PROPORTIONAL CONTROL VALVE - 33609



BASIC (STANDART) FEATURES:

Body	: GGG-40.3 Sfero Cast
Pressure Class	: PN25
Function	: Mixing - Diverting
Sealing Class	: CLASS VI (PTFE Soft Sealing)
Characteristic	: Proportional
Neck Sealing	: CLASS VI - V Packet
Max. Working Temp.	: 220°C
Flange Connection	: DIN 1092-2 (PN16)
Supply	: 220V AC / 24V DC
Protect Class	: IP54...67
Control Signal	: 4-20mA - 0-10 VDC
Feedback Signal	: 4-20mA - 0-10 VDC

Maintains its position when the power is cut off.

ACCESSORIES:

Ask for Limit Switch addition.
Ask for 0-1 Kohm potentiometer addition.
Ask for 4-20mA - 0-10 V DC Proportional Control and Feedback signal.
Ask for high ΔP's.
Ask for High Temperature and Special Applications.



4-20 mA / 0-10 V DC

SIZE (DN)	KVS (m³/h)	ΔP (Bar)	Supply Voltage	Control Signal	PRICE €
15	4	14	220 V AC	4-20 mA	3260
20	6.3	14	220 V AC	4-20 mA	3310
25	10	14	220 V AC	4-20 mA	3430
32	16	14	220 V AC	4-20 mA	3780
40	30	14	220 V AC	4-20 mA	4120
50	40	13	220 V AC	4-20 mA	4290
65	60	11	220 V AC	4-20 mA	5615
80	80	6	220 V AC	4-20 mA	6040
100	160	6	220 V AC	4-20 mA	8125
125	200	5	220 V AC	4-20 mA	
150	260	3.8	220 V AC	4-20 mA	

DN125 and DN150 body material is PN16 Cast Iron.
Ask for different body materials.

ASK FOR PRICE

MOTORIZED CONTROL VALVES

2 WAY MOTORIZED ON-OFF CONTROL VALVE FOR HOT OIL - 33615



BASIC (STANDART) FEATURES:

Body	: GGG-40.3 Ductile Iron
Pressure Class	: PN25
Safety Function	: Normally Closed - Normally Open
Sealing Class	: CLASS IV (Metal to Metal)
Characteristic	: On - Off
Neck Sealing	: CLASS VI - V Packet Metal Bellows additional
Max. Working Temp.	: 350°C
Flange Connection	: DIN 1092-2 (PN16)
Supply	: 220V AC / 24V DC
Protect Class	: IP54...67

Maintains its position when the power is cut off.

ACCESSORIES:

- Ask for Limit Switch addition.
- Ask for 0-1 Kohm potentiometer addition.
- Ask for 4-20mA - 0-10 V DC Proportional Control and Feedback signal.
- Ask for high ΔP's.
- Ask for High Temperature and Special Applications.
- Ask for different body materials.



SIZE (DN)	KVS (m³/h)	ΔP (Bar)	Supply Voltage	Control Signal	PRICE €
15	4	14	220 V AC	ON-OFF	3050
20	6.3	14	220 V AC	ON-OFF	3070
25	10	14	220 V AC	ON-OFF	3100
32	16	14	220 V AC	ON-OFF	3965
40	30	14	220 V AC	ON-OFF	4060
50	40	13	220 V AC	ON-OFF	4155
65	60	11	220 V AC	ON-OFF	5230
80	80	6	220 V AC	ON-OFF	5905
100	160	6	220 V AC	ON-OFF	7210
125	200	5	220 V AC	ON-OFF	ASK FOR PRICE
150	260	3.8	220 V AC	ON-OFF	ASK FOR PRICE

DN125 and DN150 body material is PN16 Cast Iron.
Ask for different body materials.

MOTORIZED CONTROL VALVES

3 WAY MOTORIZED ON-OFF CONTROL VALVE FOR HOT OIL - 33616



BASIC (STANDART) FEATURES:

Body	: GGG-40.3 Sfero Cast
Pressure Class	: PN25
Function	: Mixing - Diverting
Sealing Class	: CLASS IV (Metal to Metal)
Characteristic	: On - Off
Neck Sealing	: CLASS VI - V Packet Metal Bellows additional
Max. Working Temp.	: 350°C
Flange Connection	: DIN 1092-2 (PN16)
Supply	: 220V AC / 24V DC
Protect Class	: IP54...67

Maintains its position when the power is cut off.

ACCESSORIES:

- Ask for Limit Switch addition.
- Ask for 0-1 Kohm potentiometer addition.
- Ask for 4-20mA - 0-10 V DC Proportional Control and Feedback signal.
- Ask for high ΔP's.
- Ask for High Temperature and Special Applications.
- Ask for different body materials.



SIZE (DN)	KVS (m³/h)	ΔP (Bar)	Supply Voltage	Control Signal	PRICE €
15	4	14	220 V AC	ON-OFF	3495
20	6.3	14	220 V AC	ON-OFF	3555
25	10	14	220 V AC	ON-OFF	3585
32	16	14	220 V AC	ON-OFF	4125
40	30	14	220 V AC	ON-OFF	4150
50	40	13	220 V AC	ON-OFF	4275
65	60	11	220 V AC	ON-OFF	5900
80	80	6	220 V AC	ON-OFF	7230
100	160	6	220 V AC	ON-OFF	10205
125	200	5	220 V AC	ON-OFF	ASK FOR PRICE
150	260	3.8	220 V AC	ON-OFF	ASK FOR PRICE

DN125 and DN150 body material is PN16 Cast Iron.
Ask for different body materials.

MOTORIZED CONTROL VALVES

2 WAY MOTORIZED PROPORTIONAL CONTROL VALVE FOR HOT OIL - 33619



BASIC (STANDART) FEATURES:

Body	: GGG-40.3 Sfero Cast
Pressure Class	: PN25
Safety Function	: Normally Closed - Normally Open
Sealing Class	: CLASS IV (Metal to Metal)
Characteristic	: Proportional
Neck Sealing	: CLASS VI - V Packet Metal Bellows additional
Max. Working Temp.	: 350°C
Flange Connection	: DIN 1092-2 (PN16)
Supply	: 220V AC / 24V DC
Protect Class	: IP54...67

Maintains its position when the power is cut off.

ACCESSORIES:

- Ask for Limit Switch addition.
- Ask for high ΔP 's.
- Ask for High Temperature and Special Applications.
- Ask for different body materials.

4-20 mA / 0-10 V DC



SIZE (DN)	KVS (m ³ /h)	ΔP (Bar)	Supply Voltage	Control Signal	PRICE €
15	4	14	220 V AC	4-20 mA	3400
20	6.3	14	220 V AC	4-20 mA	3505
25	10	14	220 V AC	4-20 mA	3710
32	16	14	220 V AC	4-20 mA	5150
40	30	14	220 V AC	4-20 mA	5360
50	40	13	220 V AC	4-20 mA	5770
65	60	11	220 V AC	4-20 mA	6745
80	80	6	220 V AC	4-20 mA	8990
100	160	6	220 V AC	4-20 mA	13030
125	200	5	220 V AC	4-20 mA	
150	260	3.8	220 V AC	4-20 mA	

ASK FOR PRICE

DN125 and DN150 body material is PN16 Cast Iron.
Ask for different body materials.

MOTORIZED CONTROL VALVES

3 WAY MOTORIZED PROPORTIONAL CONTROL VALVE FOR HOT OIL - 33618



BASIC (STANDART) FEATURES:

Body	: GGG-40.3 Sfero Cast
Pressure Class	: PN25
Function	: Mixing - Diverting
Sealing Class	: CLASS IV (Metal to Metal)
Characteristic	: Proportional
Neck Sealing	: CLASS VI - V Packet Metal Bellows additional
Max. Working Temp.	: 350°C
Flange Connection	: DIN 1092-2 (PN16)
Supply	: 220V AC / 24V DC
Protect Class	: IP54...67

Maintains its position when the power is cut off.

ACCESSORIES:

- Ask for Limit Switch addition.
- Ask for 0-1 Kohm potentiometer addition.
- Ask for 4-20mA - 0-10 V DC Proportional Control and Feedback signal.
- Ask for high ΔP 's.
- Ask for High Temperature and Special Applications.
- Ask for different body materials.

4-20 mA / 0-10 V DC



SIZE (DN)	KVS (m ³ /h)	ΔP (Bar)	Supply Voltage	Control Signal	PRICE €
15	4	14	220 V AC	4-20 mA	4120
20	6.3	14	220 V AC	4-20 mA	4225
25	10	14	220 V AC	4-20 mA	4430
32	16	14	220 V AC	4-20 mA	5360
40	30	14	220 V AC	4-20 mA	5770
50	40	13	220 V AC	4-20 mA	6180
65	60	11	220 V AC	4-20 mA	7640
80	80	6	220 V AC	4-20 mA	9660
100	160	6	220 V AC	4-20 mA	14605
125	200	5	220 V AC	4-20 mA	
150	260	3.8	220 V AC	4-20 mA	

ASK FOR PRICE

DN125 and DN150 body material is PN16 Cast Iron.
Ask for different body materials.



SOLENOID VALVES



GENERAL PURPOSE SOLENOID VALVES

NORMALLY CLOSED

SIZE	MODEL	ORIFICE (mm)	PRESSURE	PRICE €
1/8"	GEM 1110	1	100 Bar	44
1/8"	GEM 1110	1,8	60 Bar	44
1/8"	GEM 1110	2,5	40 Bar	44
1/8"	GEM 1110	3	20 Bar	44
1/8"	GEM 1110	4	10 Bar	44
1/8"	GEM 1110	5	5 Bar	44
1/8"	GEM 1110	8	1 Bar	44
1/4"	GEM 1111	1	100 Bar	44
1/4"	GEM 1111	1,8	60 Bar	44
1/4"	GEM 1111	2,5	40 Bar	44
1/4"	GEM 1111	3	20 Bar	44
1/4"	GEM 1111	4	10 Bar	44
1/4"	GEM 1111	5	5 Bar	44
1/4"	GEM 1111	8	1 Bar	44
3/8"	GEM 1112	12	0.5-16 Bar	64
1/2"	GEM 1113	14	0.5-16 Bar	64
3/4"	GEM 1114	16	0.5-16 Bar	83
1"	GEM 1115	17	0.5-16 Bar	88
1 1/4"	GEM 1116	32	0.5-16 Bar	204
1 1/2"	GEM 1117	40	0.5-16 Bar	262
2"	GEM 1118	48	0.5-16 Bar	290



APPLICATION AREAS: Water, air and non-flammable gases.
NOTE: Ask for ex-proof applications.

Seat : NBR
Tube : Stainless Steel
Body : Brass
Core : Stainless Steel
Temperature : -10 / +90 °C
Coil : Connection Socket

3/2 NORMALLY CLOSED

SIZE	MODEL	PRESSURE	PRICE €
1/8" - 3/2"	GEM 1119	0 - 10	48
1/4" - 3/2"	GEM 1120	0 - 10	48



HIGH PRESSURE NORMALLY CLOSED

SIZE	MODEL	PRESSURE	PRICE €
3/8"	GEM 1112 YB	0.5 - 40 BAR	85
1/2"	GEM 1113 YB	0.5 - 40 BAR	85
3/4"	GEM 1114 YB	0.5 - 40 BAR	92
1"	GEM 1115 YB	0.5 - 40 BAR	98

Seat : PTFE / Viton
Tube : Stainless Steel
Body : Brass
Core : Stainless Steel
Temperature : -10 / +150 °C
Coil : Connection Socket



APPLICATION AREAS: Water, air and non-flammable gases.
NOTE: Ask for ex-proof applications.

GENERAL PURPOSE SOLENOID VALVES



NORMALLY OPEN

SIZE	MODEL	PRESSURE	PRICE €
3/8"	GEM 1112 A	0.5-16	80
1/2"	GEM 1113 A	0.5-16	80
3/4"	GEM 1114 A	0.5-16	85
1"	GEM 1115 A	0.5-16	91
1 1/4"	GEM 1116 A	0.5-12	210
1 1/2"	GEM 1117 A	0.5-12	268
2"	GEM 1118 A	0.5-12	297



APPLICATION AREAS: Water, air and non-flammable gases.
NOTE: Ask for ex-proof applications.

Seat : NBR
 Tube : Brass
 Body : Brass
 Core : Stainless Steel
 Temperature : -10 / +90 °C
 Coil : Connection Socket

HIGH PRESSURE NORMALLY OPEN

SIZE	MODEL	PRESSURE	PRICE €
3/8"	GEM 1112 YB A	0.5-40	87
1/2"	GEM 1113 YB A	0.5-40	87
3/4"	GEM 1114 YB A	0.5-40	94
1"	GEM 1115 YB A	0.5-40	100



APPLICATION AREAS: Water, air and non-flammable gases.
NOTE: Ask for ex-proof applications.

Seat : PTFE / Viton
 Tube : Brass
 Body : Brass
 Core : Stainless Steel
 Temperature : -10 / +150 °C
 Coil : Connection Socket

STEAM SOLENOID VALVES



NORMALLY CLOSED

SIZE	MODEL	ORIFICE (mm)	PRESSURE	PRICE €
1/8"	BHR 1210	1	25 Bar	44
1/8"	BHR 1210	1,8	25 Bar	44
1/8"	BHR 1210	2,5	25 Bar	44
1/8"	BHR 1210	3	16 Bar	44
1/8"	BHR 1210	4	5 Bar	44
1/8"	BHR 1210	5	1 Bar	44
1/4"	BHR 1211	1	25 Bar	44
1/4"	BHR 1211	1,8	25 Bar	44
1/4"	BHR 1211	2,5	25 Bar	44
1/4"	BHR 1211	3	16 Bar	44
1/4"	BHR 1211	4	5 Bar	44
1/4"	BHR 1211	5	1 Bar	44
3/8"	BHR 1212	12	0.5-6	88
1/2"	BHR 1213	14	0.5-6	88
3/4"	BHR 1214	16	0.5-6	95
1"	BHR 1215	17	0.5-6	101
1 1/4"	BHR 1216	32	0.5-6	232
1 1/2"	BHR 1217	40	0.5-6	268
2"	BHR 1218	48	0.5-6	298



APPLICATION AREAS: Water, air and steam
NOTE: Ask for ex-proof applications.

Seat : PTFE / EPDM
 Tube : Stainless Steel
 Body : Brass
 Core : Stainless Steel
 Temperature : -10 / +180 °C
 Coil : Connection Socket

NORMALLY OPEN

SIZE	MODEL	PRESSURE	PRICE €
3/8"	BHR 1212 A	0.5-6	91
1/2"	BHR 1213 A	0.5-6	91
3/4"	BHR 1214 A	0.5-6	98
1"	BHR 1215 A	0.5-6	107
1 1/4"	BHR 1216 A	0.5-6	237
1 1/2"	BHR 1217 A	0.5-6	273
2"	BHR 1218 A	0.5-6	301



APPLICATION AREAS: Water, air and steam
NOTE: Ask for ex-proof applications.

Seat : PTFE / EPDM
 Tube : Brass
 Body : Brass
 Core : Stainless Steel
 Temperature : -10 / +180 °C
 Coil : Connection Socket

COMPRESSOR SOLENOID VALVES



NORMALLY CLOSED

SIZE	MODEL	ORIFICE (mm)	PRESSURE	PRICE €
1/8"	KOM 1500	1	100 Bar	44
1/8"	KOM 1500	1,8	60 Bar	44
1/8"	KOM 1500	2,5	40 Bar	44
1/8"	KOM 1500	3	20 Bar	44
1/8"	KOM 1500	4	10 Bar	44
1/8"	KOM 1500	5	5 Bar	44
1/8"	KOM 1500	8	1 Bar	44
1/4"	KOM 1501	1	100 Bar	44
1/4"	KOM 1501	1,8	60 Bar	44
1/4"	KOM 1501	2,5	40 Bar	44
1/4"	KOM 1501	3	20 Bar	44
1/4"	KOM 1501	4	10 Bar	44
1/4"	KOM 1501	5	5 Bar	44
1/4"	KOM 1501	8	1 Bar	44
3/8"	KOM 1502	12	0.5-16	88
1/2"	KOM 1503	14	0.5-16	88
3/4"	KOM 1504	16	0.5-16	97
1"	KOM 1505	17	0.5-16	106



APPLICATION AREAS: Oily air and high temperatures
NOTE: Ask for ex-proof applications.

Seat : Viton
Tube : Stainless Steel
Body : Brass
Core : Stainless Steel
Temperature : -10 / +150 °C
Coil : Connection Socket

3/2 NORMALLY CLOSED

SIZE	MODEL	PRESSURE	PRICE €
1/8" - 3/2"	KOM 1509	0-10 Bar	48
1/4" - 3/2"	KOM 1510	0-10 Bar	48



NORMALLY OPEN

SIZE	MODEL	PRESSURE	PRICE €
3/8"	KOM 1502 A	0.5-16	91
1/2"	KOM 1503 A	0.5-16	91
3/4"	KOM 1504 A	0.5-16	99
1"	KOM 1505 A	0.5-16	108

Seat : Viton
Tube : Brass
Body : Brass
Core : Stainless Steel
Temperature : -10 / +150 °C
Coil : Connection Socket



APPLICATION AREAS: Oily air and high temperatures
NOTE: Ask for ex-proof applications.

PISTON TYPE SOLENOID VALVES



NORMALLY CLOSED

SIZE	MODEL	PRESSURE	PRICE €
3/8"	PST 1313	0.5-10 Bar	97
1/2"	PST 1314	0.5-10 Bar	97

Seat : EPDM / NBR / Viton
Tube : Stainless Steel
Body : Brass
Core : Stainless Steel
Temperature : -10 / +150 °C
Coil : Connection Socket
Spring : Stainless Steel



APPLICATION AREAS: Water, air and non-flammable gases.
NOTE: Ask for ex-proof applications.

NORMALLY OPEN

SIZE	MODEL	PRESSURE	PRICE €
3/8"	PST 1313 A	0.5-10 Bar	99
1/2"	PST 1314 A	0.5-10 Bar	99

Seat : EPDM / NBR / Viton
Tube : Brass
Body : Brass
Core : Stainless Steel
Temperature : -10 / +150 °C
Coil : Connection Socket
Spring : Stainless Steel



APPLICATION AREAS: Water, air and non-flammable gases.
NOTE: Ask for ex-proof applications.

WEDGE BODY SOLENOID VALVES



BRASS WEDGE BODY NORMALLY CLOSED

SIZE	MODEL	ORIFICE (mm)	PRESSURE	PRICE €
1/8"	TKZ1110	1	100 Bar	40
1/8"	TKZ1110	1,8	60 Bar	40
1/8"	TKZ1110	2,5	40 Bar	40
1/8"	TKZ1110	3	20 Bar	40
1/8"	TKZ1110	4	10 Bar	40
1/8"	TKZ1110	5	5 Bar	40
1/8"	TKZ1110	8	1 Bar	40
1/4"	TKZ1111	1	100 Bar	40
1/4"	TKZ1111	1,8	60 Bar	40
1/4"	TKZ1111	2,5	40 Bar	40
1/4"	TKZ1111	3	20 Bar	40
1/4"	TKZ1111	4	10 Bar	40
1/4"	TKZ1111	5	5 Bar	40
1/4"	TKZ1111	8	1 Bar	40
3/8"	TKZ1112	1	100 Bar	47
3/8"	TKZ1112	1,8	60 Bar	47
3/8"	TKZ1112	2,5	40 Bar	47
3/8"	TKZ1112	3	20 Bar	47
3/8"	TKZ1112	4	10 Bar	47
3/8"	TKZ1112	5	5 Bar	47
3/8"	TKZ1112	8	1 Bar	47
1/2"	TKZ1113	1	100 Bar	47
1/2"	TKZ1113	1,8	60 Bar	47
1/2"	TKZ1113	2,5	40 Bar	47
1/2"	TKZ1113	3	20 Bar	47
1/2"	TKZ1113	4	10 Bar	47
1/2"	TKZ1113	5	5 Bar	47
1/2"	TKZ1113	8	1 Bar	47
3/4"	TKZ1114	1	100 Bar	50
3/4"	TKZ1114	1,8	60 Bar	50
3/4"	TKZ1114	2,5	40 Bar	50
3/4"	TKZ1114	3	20 Bar	50
3/4"	TKZ1114	4	10 Bar	50
3/4"	TKZ1114	5	5 Bar	50
3/4"	TKZ1114	8	1 Bar	50
1"	TKZ1115	1	100 Bar	63
1"	TKZ1115	1,8	60 Bar	63
1"	TKZ1115	2,5	40 Bar	63
1"	TKZ1115	3	20 Bar	63
1"	TKZ1115	4	10 Bar	63
1"	TKZ1115	5	5 Bar	63
1"	TKZ1115	8	1 Bar	63



APPLICATION AREAS: Water, air and non-flammable gases.
NOTE: Ask for ex-proof applications.

Seat : EPDM / NBR
 Tube : Stainless Steel
 Body : Brass
 Core : Stainless Steel
 Temperature : -10 / +130 °C
 Coil : Connection Socket
 Spring : Stainless Steel

WEDGE BODY SOLENOID VALVES



STAINLESS STEEL WEDGE BODY NORMALLY CLOSED

SIZE	MODEL	ORIFICE (mm)	PRESSURE	PRICE €
1/8"	PSV 1600	1	100 Bar	75
1/8"	PSV 1600	1,8	60 Bar	75
1/8"	PSV 1600	2,5	40 Bar	75
1/8"	PSV 1600	3	20 Bar	75
1/8"	PSV 1600	4	10 Bar	75
1/8"	PSV 1600	5	5 Bar	75
1/8"	PSV 1600	8	1 Bar	75
1/4"	PSV 1601	1	100 Bar	75
1/4"	PSV 1601	1,8	60 Bar	75
1/4"	PSV 1601	2,5	40 Bar	75
1/4"	PSV 1601	3	20 Bar	75
1/4"	PSV 1601	4	10 Bar	75
1/4"	PSV 1601	5	5 Bar	75
1/4"	PSV 1601	8	1 Bar	75
3/8"	PSV 1602	1	100 Bar	86
3/8"	PSV 1602	1,8	60 Bar	86
3/8"	PSV 1602	2,5	40 Bar	86
3/8"	PSV 1602	3	20 Bar	86
3/8"	PSV 1602	4	10 Bar	86
3/8"	PSV 1602	5	5 Bar	86
3/8"	PSV 1602	8	1 Bar	86
1/2"	PSV 1603	1	100 Bar	86
1/2"	PSV 1603	1,8	60 Bar	86
1/2"	PSV 1603	2,5	40 Bar	86
1/2"	PSV 1603	3	20 Bar	86
1/2"	PSV 1603	4	10 Bar	86
1/2"	PSV 1603	5	5 Bar	86
1/2"	PSV 1603	8	1 Bar	86
3/4"	PSV 1604	1	100 Bar	95
3/4"	PSV 1604	1,8	60 Bar	95
3/4"	PSV 1604	2,5	40 Bar	95
3/4"	PSV 1604	3	20 Bar	95
3/4"	PSV 1604	4	10 Bar	95
3/4"	PSV 1604	5	5 Bar	95
3/4"	PSV 1604	8	1 Bar	95
1"	PSV 1605	1	100 Bar	105
1"	PSV 1605	1,8	60 Bar	105
1"	PSV 1605	2,5	40 Bar	105
1"	PSV 1605	3	20 Bar	105
1"	PSV 1605	4	10 Bar	105
1"	PSV 1605	5	5 Bar	105
1"	PSV 1605	8	1 Bar	105



APPLICATION AREAS: Water, air and non-flammable gases.
NOTE: Ask for ex-proof applications.

Seat : PTFE / Viton
 Tube : Stainless Steel
 Body : Stainless Steel
 Core : Stainless Steel
 Temperature : -10 / +160 °C
 Coil : Connection Socket
 Spring : Stainless Steel

FULL BORE GENERAL PURPOSE SOLENOID VALVES



NORMALLY CLOSED

SIZE	MODEL	ORIFICE (mm)	PRESSURE	PRICE €
3/4"	TGM 2004	20 mm	0.5-16 Bar	157
1"	TGM 2005	25 mm	0.5-16 Bar	189

Seat : PTFE / Viton
 Tube : Brass
 Body : Brass
 Core : Stainless Steel
 Temperature : -10 / +90 °C
 Coil : Connection Socket



APPLICATION AREAS: Water, air and non-flammable gases.
 NOTE: Ask for ex-proof applications.

NORMALLY OPEN

SIZE	MODEL	ORIFICE (mm)	PRESSURE	PRICE €
3/4"	TGMA 2004	20 mm	0.5-16 Bar	173
1"	TGMA 2005	25 mm	0.5-16 Bar	205

Seat : PTFE / Viton
 Tube : Brass
 Body : Brass
 Core : Stainless Steel
 Temperature : -10 / +150 °C
 Coil : Connection Socket



APPLICATION AREAS: Water, air and non-flammable gases.
 NOTE: Ask for ex-proof applications.

STAINLESS STEEL GENERAL PURPOSE SOLENOID VALVES



NORMALLY CLOSED

SIZE	MODEL	ORIFICE (mm)	PRESSURE	PRICE €
1/8"	IGM 1600	1	100 Bar	75
1/8"	IGM 1600	1,8	60 Bar	75
1/8"	IGM 1600	2,5	40 Bar	75
1/8"	IGM 1600	3	20 Bar	75
1/8"	IGM 1600	4	10 Bar	75
1/8"	IGM 1600	5	5 Bar	75
1/8"	IGM 1600	8	1 Bar	75
1/4"	IGM 1601	1	100 Bar	75
1/4"	IGM 1601	1,8	60 Bar	75
1/4"	IGM 1601	2,5	40 Bar	75
1/4"	IGM 1601	3	20 Bar	75
1/4"	IGM 1601	4	10 Bar	75
1/4"	IGM 1601	5	5 Bar	75
1/4"	IGM 1601	8	1 Bar	75
3/8"	IGM 1602	12	0.5-16 Bar	140
1/2"	IGM 1603	14	0.5-16 Bar	144
3/4"	IGM 1604	16	0.5-16 Bar	150
1"	IGM 1605	17	0.5-16 Bar	156



APPLICATION AREAS: Water, air and non-flammable gases.
 NOTE: Ask for ex-proof applications.

Seat : NBR
 Tube : Stainless Steel
 Body : Stainless Steel
 Core : Stainless Steel
 Temperature : -10 / +90 °C
 Coil : Connection Socket

3/2 NORMALLY CLOSED

SIZE	MODEL	PRESSURE	PRICE €
1/8" - 3/2"	IGM 1609	0-10 Bar	92
1/4" - 3/2"	IGM 1610	0-10 Bar	92



HIGH PRESSURE NORMALLY CLOSED

SIZE	MODEL	PRESSURE	PRICE €
3/8"	IGM 1602 YB	0.5-40 Bar	146
1/2"	IGM 1603 YB	0.5-40 Bar	146
3/4"	IGM 1604 YB	0.5-40 Bar	155
1"	IGM 1605 YB	0.5-40 Bar	166

Seat : PTFE / Viton
 Tube : Stainless Steel
 Body : Stainless Steel
 Core : Stainless Steel
 Temperature : -10 / +150 °C
 Coil : Connection Socket



APPLICATION AREAS: Water, air and non-flammable gases.
 NOTE: Ask for ex-proof applications.

STAINLESS STEEL STEAM SOLENOID VALVES



NORMALLY CLOSED

SIZE	MODEL	ORIFICE (mm)	PRESSURE	PRICE €
1/8"	IBR 1700	1	100 Bar	75
1/8"	IBR 1700	1,8	60 Bar	75
1/8"	IBR 1700	2,5	40 Bar	75
1/8"	IBR 1700	3	20 Bar	75
1/8"	IBR 1700	4	10 Bar	75
1/8"	IBR 1700	5	5 Bar	75
1/8"	IBR 1700	8	1 Bar	75
1/4"	IBR 1701	1	100 Bar	75
1/4"	IBR 1701	1,8	60 Bar	75
1/4"	IBR 1701	2,5	40 Bar	75
1/4"	IBR 1701	3	20 Bar	75
1/4"	IBR 1701	4	10 Bar	75
1/4"	IBR 1701	5	5 Bar	75
1/4"	IBR 1701	8	1 Bar	75
3/8"	IBR 1702	12	0.5-6 Bar	155
1/2"	IBR 1703	14	0.5-6 Bar	155
3/4"	IBR 1704	16	0.5-6 Bar	155
1"	IBR 1705	17	0.5-6 Bar	166



APPLICATION AREAS: Water, air and steam
NOTE: Ask for ex-proof applications.

Seat : PTFE / EPDM
Tube : Stainless Steel
Body : Stainless Steel
Core : Stainless Steel
Temperature : -10 / +180 °C
Coil : Connection Socket

NORMALLY OPEN

SIZE	MODEL	PRESSURE	PRICE €
3/8"	IBR 1702 A	0.5-6 Bar	166
1/2"	IBR 1703 A	0.5-6 Bar	166
3/4"	IBR 1704 A	0.5-6 Bar	189
1"	IBR 1705 A	0.5-6 Bar	202

Seat : PTFE / EPDM
Tube : Stainless Steel
Body : Stainless Steel
Core : Stainless Steel
Temperature : -10 / +180 °C
Coil : Connection Socket



APPLICATION AREAS: Water, air and steam
NOTE: Ask for ex-proof applications.

STAINLESS STEEL COMPRESSOR SOLENOID VALVES



NORMALLY CLOSED

SIZE	MODEL	ORIFICE (mm)	PRESSURE	PRICE €
1/8"	IKM 1900	1	100 Bar	75
1/8"	IKM 1900	1,8	60 Bar	75
1/8"	IKM 1900	2,5	40 Bar	75
1/8"	IKM 1900	3	20 Bar	75
1/8"	IKM 1900	4	10 Bar	75
1/8"	IKM 1900	5	5 Bar	75
1/8"	IKM 1900	8	1 Bar	75
1/4"	IKM 1901	1	100 Bar	75
1/4"	IKM 1901	1,8	60 Bar	75
1/4"	IKM 1901	2,5	40 Bar	75
1/4"	IKM 1901	3	20 Bar	75
1/4"	IKM 1901	4	10 Bar	75
1/4"	IKM 1901	5	5 Bar	75
1/4"	IKM 1901	8	1 Bar	75
3/8"	IKM 1902	12	0.5-16 Bar	155
1/2"	IKM 1903	14	0.5-16 Bar	155
3/4"	IKM 1904	16	0.5-16 Bar	166
1"	IKM 1905	17	0.5-16 Bar	182



APPLICATION AREAS: Oily air and high temperatures
NOTE: Ask for ex-proof applications.

Seat : Viton
Tube : Stainless Steel
Body : Stainless Steel
Core : Stainless Steel
Temperature : -10 / +150 °C
Coil : Connection Socket

3/2 NORMALLY CLOSED

SIZE	MODEL	PRESSURE	PRICE €
1/8" - 3/2"	IKM 1909	0-10 Bar	92
1/4" - 3/2"	IKM 1910	0-10 Bar	92



HIGH PRESSURE NORMALLY CLOSED

SIZE	MODEL	PRESSURE	PRICE €
3/8"	IKM 1902 YB	0.5-40 Bar	166
1/2"	IKM 1903 YB	0.5-40 Bar	166
3/4"	IKM 1904 YB	0.5-40 Bar	182
1"	IKM 1905 YB	0.5-40 Bar	198

Seat : Viton
Tube : Stainless Steel
Body : Stainless Steel
Core : Stainless Steel
Temperature : -10 / +150 °C
Coil : Connection Socket



APPLICATION AREAS: Oily air and high temperatures
NOTE: Ask for ex-proof applications.

SOLENOID VALVES FOR FUEL

NORMALLY CLOSED

SIZE	MODEL	ORIFICE (mm)	PRESSURE	PRICE €
1/8"	YKT 1500	1	100 Bar	75
1/8"	YKT 1500	1,8	60 Bar	75
1/8"	YKT 1500	2,5	40 Bar	75
1/8"	YKT 1500	3	20 Bar	75
1/8"	YKT 1500	4	10 Bar	75
1/8"	YKT 1500	5	5 Bar	75
1/8"	YKT 1500	8	1 Bar	75
1/4"	YKT 1501	1	100 Bar	75
1/4"	YKT 1501	1,8	60 Bar	75
1/4"	YKT 1501	2,5	40 Bar	75
1/4"	YKT 1501	3	20 Bar	75
1/4"	YKT 1501	4	10 Bar	75
1/4"	YKT 1501	5	5 Bar	75
1/4"	YKT 1501	8	1 Bar	75
3/8"	YKT 1502	12	0.5-16 Bar	155
1/2"	YKT 1503	14	0.5-16 Bar	155
3/4"	YKT 1504	16	0.5-16 Bar	166
1"	YKT 1505	17	0.5-16 Bar	182



Seat : Viton
 Tube : Stainless Steel
 Body : Brass
 Core : Stainless Steel
 Temperature : -10 / +150 °C
 Coil : Connection Socket

NORMALLY OPEN

SIZE	MODEL	PRESSURE	PRICE €
3/8"	YKT 1512 A	0.5-16 Bar	166
1/2"	YKT 1513 A	0.5-16 Bar	166
3/4"	YKT 1514 A	0.5-16 Bar	182
1"	YKT 1515 A	0.5-16 Bar	202

Seat : Viton
 Tube : Brass
 Body : Brass
 Core : Stainless Steel
 Temperature : -10 / +150 °C
 Coil : Connection Socket



APPLICATION AREAS: Oily air and high temperatures
 NOTE: Ask for ex-proof applications.



VACUUM SOLENOID VALVES

NORMALLY CLOSED

SIZE	MODEL	ORIFIS (mm)	PRESSURE	PRICE €
1/8"	VKM 1400	1	100 Bar	66
1/8"	VKM 1400	1,8	60 Bar	66
1/8"	VKM 1400	2,5	40 Bar	66
1/8"	VKM 1400	3	20 Bar	66
1/8"	VKM 1400	4	10 Bar	66
1/8"	VKM 1400	5	5 Bar	66
1/8"	VKM 1400	8	1 Bar	66
1/4"	VKM 1411	1	100 Bar	66
1/4"	VKM 1411	1,8	60 Bar	66
1/4"	VKM 1411	2,5	40 Bar	66
1/4"	VKM 1411	3	20 Bar	66
1/4"	VKM 1411	4	10 Bar	66
1/4"	VKM 1411	5	5 Bar	66
1/4"	VKM 1411	8	1 Bar	66
3/8"	VKM 1412	12	0.5-16 Bar	117
1/2"	VKM 1413	14	0.5-16 Bar	117
3/4"	VKM 1414	16	0.5-16 Bar	123
1"	VKM 1415	17	0.5-16 Bar	131
1 1/4"	VKM 1416	32	0.5-16 Bar	305
1 1/2"	VKM 1417	40	0.5-16 Bar	392
2"	VKM 1418	48	0.5-16 Bar	436



Seat : NBR
 Tube : Stainless Steel
 Body : Brass
 Core : Stainless Steel
 Temperature : -10 / +90 °C
 Coil : Connection Socket

NORMALLY OPEN

SIZE	MODEL	PRESSURE	PRICE €
3/8"	VKM 1412 A	0.5-16	120
1/2"	VKM 1413 A	0.5-16	120
3/4"	VKM 1414 A	0.5-16	127
1"	VKM 1415 A	0.5-16	136
1 1/4"	VKM 1416 A	0.5-16	316
1 1/2"	VKM 1417 A	0.5-16	403
2"	VKM 1418 A	0.5-16	447

Seat : NBR
 Tube : Brass
 Body : Brass
 Core : Stainless Steel
 Temperature : -10 / +90 °C
 Coil : Connection Socket



SOLENOID VALVES



AUTOMATIC DRAIN SOLENOID VALVE

SIZE	MODEL	PRICE €
1/2"	U-728A	75



APPLICATION AREAS: Water, air and oily air.
NOTE: Ask for ex-proof applications.

TIMER

CODE	PRICE €
1510002	30



SOLENOID VALVES SPARE PARTS AND ACCESSORIES

SPARE PARTS AND ACCESSORIES

PRODUCTS	PRICE €
CORE (GENERAL PURPOSE - STEAM)	16
CORE (3/2)	18
220V AC COIL (ROUND)	22
12V - 24V - 110V AC/DC COIL (ROUND)	22
220 V COIL (WITH SOCKET)	22
12V - 24V - 110V AC/DC COIL (WITH SOCKET)	22
GENERAL PURPOSE DIAPHRAGM (3/8" - 1/2" - 3/4" - 1")	24
GENERAL PURPOSE DIAPHRAGM (1 1/4" - 1 1/2" - 2")	72
STEAM DIAPHRAGM (3/8" - 1/2" - 3/4" - 1")	28
STEAM DIAPHRAGM (1 1/4" - 1 1/2" - 2")	84
COMPRESSOR VALVE DIAPHRAGM	28
BRASS HIVE (N.C.)	22
BRASS HIVE (3/2)	24
SOCKET	8
LIGHTED SOCKET	9
HIGH PRESS. DIAPHRAGM (3/8" - 1/2" - 3/4" - 1")	27
STAINLESS STEEL HIVE (N.C.)	29
STAINLESS STEEL HIVE (3/2)	33
EX-PROOF COIL (24V - 220V AC/DC)	160



HYDRAULIC CONTROL VALVES



PRESSURE REDUCING CONTROL VALVE

MODEL	SIZE	PRICE €
D-PRV	DN50	279
	DN65	294
	DN80	382
	DN100	401
	DN125	471
	DN150	862
	DN200	1.398
	DN250	1.812
	DN300	2.717



HYDRAULIC CONTROL VALVES



PRESSURE RELIEF VALVE

MODEL	SIZE	PRICE €
D-QRV	DN50	283
	DN65	289
	DN80	382
	DN100	392
	DN125	586
	DN150	922
	DN200	1.630
	DN250	1.932
	DN300	2.906



ELECTRIC CONTROLLED PRESSURE REDUCING VALVE

MODEL	SIZE	PRICE €
D-ECV	DN50	372
	DN65	387
	DN80	466
	DN100	485
	DN125	540
	DN150	932
	DN200	1.491
	DN250	1.849
	DN300	2.755



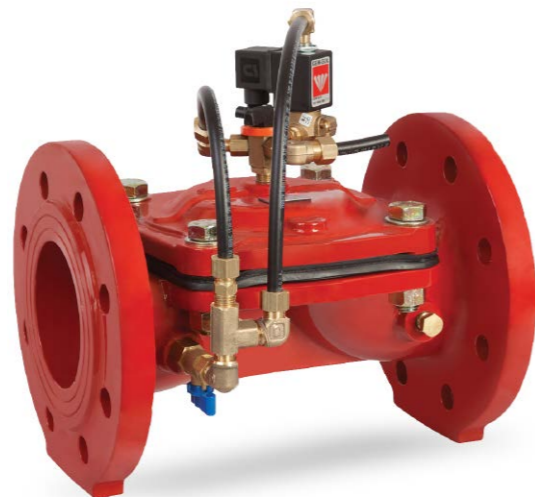
PRESSURE FIXING AND BREAKING CONTROL VALVE

MODEL	SIZE	PRICE €
D-PSV	DN50	283
	DN65	299
	DN80	366
	DN100	396
	DN125	471
	DN150	848
	DN200	1.398
	DN250	1.812
	DN300	2.717



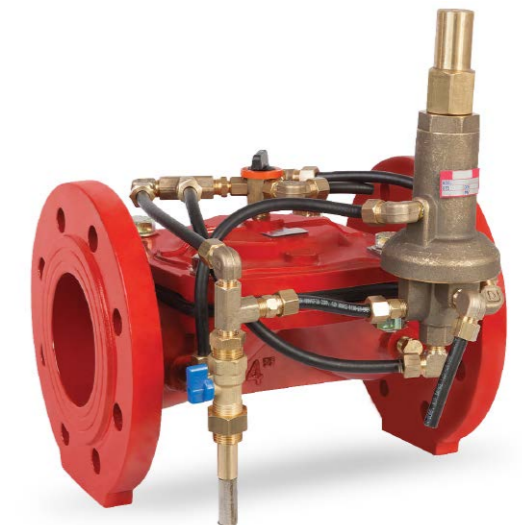
SOLENOID CONTROL VALVE

MODEL	SIZE	PRICE €
D-SCV	DN50	268
	DN65	275
	DN80	351
	DN100	401
	DN125	429
	DN150	955
	DN200	1.417
	DN250	1.661
	DN300	2.378



FLOW CONTROL VALVE

MODEL	SIZE	PRICE €
D-FRV	DN50	470
	DN65	494
	DN80	598
	DN100	634
	DN125	653
	DN150	1.118
	DN200	1.537
	DN250	1.848
	DN300	2.831



HYDRAULIC CONTROL VALVES



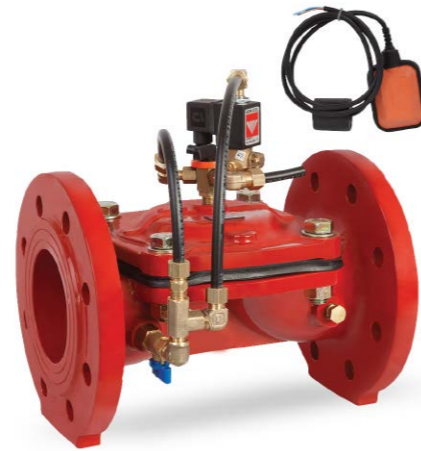
FLOAT LEVEL CONTROL VALVE

MODEL	SIZE	PRICE €
G-FRV	DN50	279
	DN65	289
	DN80	372
	DN100	405
	DN125	466
	DN150	848
	DN200	1.286
	DN250	1.661
	DN300	2.453



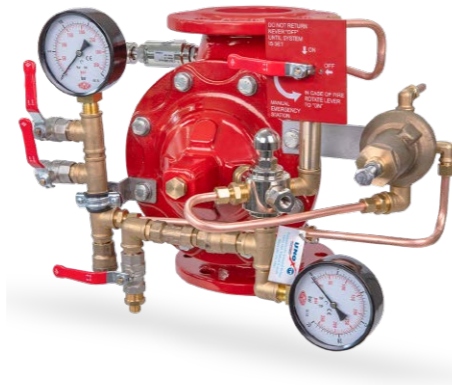
ELECTRIC FLOAT LEVEL CONTROL VALVE

MODEL	SIZE	PRICE €
D-EFLY	DN50	315
	DN65	328
	DN80	410
	DN100	418
	DN125	455
	DN150	1.028
	DN200	1.444
	DN250	1.808
	DN300	2.491



DRY TYPE DELUGE VALVE

MODEL	SIZE	PRICE €
D-PDV	DN50	ASK FOR PRICE
	DN65	ASK FOR PRICE
	DN80	ASK FOR PRICE
	DN100	ASK FOR PRICE
	DN125	ASK FOR PRICE
	DN150	ASK FOR PRICE
	DN200	ASK FOR PRICE



ELECTRIC TYPE DELUGE VALVE

MODEL	SIZE	PRICE €
D-EDV	DN50	1.368
	DN65	1.402
	DN80	1.713
	DN100	1.756
	DN125	1.867
	DN150	2.401
	DN200	3.122



FIRE GROUP CONTROL VALVE

SUPERVISORY SWITCH BUTTERFLY VALVE

MODEL	SIZE	PRICE €
Y-130	DN50	200
	DN65	215
	DN80	231
	DN100	270
	DN125	394
	DN150	429
	DN200	600



RISING STEM GATE VALVES

MODEL	SIZE	PRICE €
Y-140	DN50	392
	DN65	446
	DN80	500
	DN100	549
	DN125	685
	DN150	849
	DN200	1.240
	DN250	2.441
	DN300	3.238



FLOW SWITCHES

MODEL	SIZE	PRICE €
Y-150	DN50	130
	DN65	132
	DN80	135
	DN100	138
	DN125	140
	DN150	145
	DN200	150





STAINLESS STEEL VALVE GROUP



STAINLESS STEEL FLANGES

PN 10 / PN 16 AISI 304L, FLANGE

SIZE	MODEL	PRICE €	SIZE	MODEL	PRICE €
DN15	7100015	19	DN65	7100065	67
DN20	7100020	23	DN80	7100080	75
DN25	7100025	25	DN100	7100100	93
DN32	7100032	39	DN125	7100125	116
DN40	7100040	44	DN150	7100150	139
DN50	7100050	54	DN200	7100200	209



PN 10 / PN 16 AISI 304L, FLAT BLIND FLANGE

SIZE	MODEL	PRICE €	SIZE	MODEL	PRICE €
DN15	7110015	24	DN65	7110065	102
DN20	7110020	31	DN80	7110080	129
DN25	7110025	36	DN100	7110100	155
DN32	7110032	58	DN125	7110125	222
DN40	7110040	66	DN150	7110150	279
DN50	7110050	80	DN200	7110200	455



STAINLESS STEEL NEEDLE VALVE

AISI304		
SIZE	MODEL	PRICE €
1/4"	261008	66
3/8"	261012	66
1/2"	261015	66
3/4"	261020	88
1"	261025	138



STAINLESS STEEL GATE VALVE

SIZE	AISI 304		AISI 316	
	MODEL	PRICE €	MODEL	PRICE €
1/2"	SV.015	33	SV.0015	45
3/4"	SV.020	38	SV.0020	53
1"	SV.025	48	SV.0025	71
1 1/4"	SV.032	65	SV.0032	101
1 1/2"	SV.040	87	SV.0040	133
2"	SV.050	181	SV.0050	189
2 1/2"	SV.065	655	SV.0065	680
3"	SV.080	680	SV.0080	705
4"	SV.100	730	SV.0100	756



BALL VALVES



2 PIECE STAINLESS STEEL THREADED BALL VALVE

SIZE	AISI 304		AISI 316	
	MODEL	PRICE €	MODEL	PRICE €
1/2"	3320015	15	3330015	21
3/4"	3320020	21	3330020	24
1"	3320025	29	3330025	38
1 1/4"	3320032	45	3330032	62
1 1/2"	3320040	62	3330040	85
2"	3320050	84	3330050	117
2 1/2"	3320065	179	3330065	284
3"	3320080	264	3330080	381
4"	3320100	441	3330100	573



3 PIECE STAINLESS STEEL THREADED BALL VALVE

SIZE	AISI 304		AISI 316	
	MODEL	PRICE €	MODEL	PRICE €
1/2"	3341015	25	3351015	34
3/4"	3341020	32	3351020	43
1"	3341025	45	3351025	58
1 1/4"	3341032	66	3351032	93
1 1/2"	3341040	82	3351040	118
2"	3341050	131	3351050	181
2 1/2"	3341065	312	3351065	466
3"	3341080	486	3351080	650
4"	3341100	982	3351100	1.347



2 PIECE STAINLESS STEEL THREADED BALL VALVE WITH MOUNTING PAD

SIZE	AISI 304		AISI 316	
	MODEL	PRICE €	MODEL	PRICE €
1/2"	3310015	25	3311015	39
3/4"	3310020	38	3311020	53
1"	3310025	58	3311025	73
1 1/4"	3310032	83	3311032	111
1 1/2"	3310040	118	3311040	161
2"	3310050	156	3311050	209
2 1/2"	3310065	332		
3"	3310080	529		



BALL VALVES



2 PIECE STAINLESS STEEL FLANGED BALL VALVE WITH MOUNTING PAD

SIZE	AISI 304		AISI 316	
	MODEL	PRICE €	MODEL	PRICE €
DN15	3400015	112	3401015	140
DN20	3400020	128	3401020	180
DN25	3400025	156	3401025	212
DN32	3400032	233	3401032	303
DN40	3400040	280	3401040	371
DN50	3400050	350	3401050	476
DN65	3400065	459	3401065	664
DN80	3400080	583	3401080	776
DN100	3400100	711	3401100	1.035
DN125	3400125	1.567	3401125	2.035
DN150	3400150	2.033	3401150	2.539
DN200	3400200	3.140	3401200	4.327



3 PIECE STAINLESS STEEL THREADED BALL VALVE WITH MOUNTING PAD

SIZE	AISI 304		AISI 316	
	MODEL	PRICE €	MODEL	PRICE €
1/2"	3340015	38	3350015	48
3/4"	3340020	45	3350020	55
1"	3340025	65	3350025	83
1 1/4"	3340032	87	3350032	107
1 1/2"	3340040	123	3350040	159
2"	3340050	161	3350050	214
2 1/2"	3340065	327	3350065	461
3"	3340080	489	3350080	625
4"	3340100	1.007	3350100	1.368



3 PIECE STAINLESS STEEL FLANGED BALL VALVE WITH MOUNTING PAD

SIZE	AISI 304		AISI 316	
	MODEL	PRICE €	MODEL	PRICE €
DN15	3360015	110	3370015	138
DN20	3360020	138	3370020	154
DN25	3360025	175	3370025	207
DN32	3360032	247	3370032	331
DN40	3360040	326	3370040	389
DN50	3360050	408	3370050	462
DN65	3360065	541	3370065	650
DN80	3360080	706	3370080	933
DN100	3360100	961	3370100	1.278



BALL VALVES



3 WAY L-PORT STAINLESS STEEL THREADED BALL VALVE WITH MOUNTING PAD

SIZE	AISI 304		AISI 316	
	MODEL	PRICE €	MODEL	PRICE €
1/2"	3380015	54	3381015	68
3/4"	3380020	62	3381020	86
1"	3380025	91	3381025	121
1 1/4"	3380032	159	3381032	201
1 1/2"	3380040	232	3381040	302
2"	3380050	300	3381050	428
2 1/2"	3380065	630	3381065	705
3"	3380080	1.209	3381080	1.637



3 WAY T-PORT STAINLESS STEEL THREADED BALL VALVE WITH MOUNTING PAD

SIZE	AISI 304		AISI 316	
	MODEL	PRICE €	MODEL	PRICE €
1/2"	3390015	59	3391015	76
3/4"	3390020	83	3391020	101
1"	3390025	106	3391025	133
1 1/4"	3390032	176	3391032	222
1 1/2"	3390040	252	3391040	332
2"	3390050	327	3391050	471
2 1/2"	3390065	693	3391065	781
3"	3390080	1.310	3391080	1.801



STAINLESS STEEL MONOBLOCK BALL VALVE

SIZE	AISI 304		AISI 316	
	MODEL	PRICE €	MODEL	PRICE €
DN15	3410015	117	3411015	135
DN20	3410020	135	3411020	173
DN25	3410025	184	3411025	219
DN32	3410032	205	3411032	256
DN40	3410040	254	3411040	282
DN50	3410050	336	3411050	387
DN65	3410065	443	3411065	588
DN80	3410080	585	3411080	746
DN100	3410100	762	3411100	1.037
DN125	3410125	1.661	3411125	2.076
DN150	3410150	2.404	3411150	2.841



CHECK VALVE / STRAINER



SWING CHECK VALVE

SIZE	AISI 304		AISI 316	
	MODEL	PRICE €	MODEL	PRICE €
1/2"	2390015	16	2400015	21
3/4"	2390020	23	2400020	31
1"	2390025	27	2400025	37
1 1/4"	2390032	46	2400032	63
1 1/2"	2390040	53	2400040	75
2"	2390050	70	2400050	100
2 1/2"	2390065	169	2400065	256
3"	2390080	289	2400080	390
4"	2390100	695	2400100	804



Y TYPE STAINLESS STEEL STRAINER

SIZE	AISI 304		AISI 316	
	MODEL	PRICE €	MODEL	PRICE €
1/2"	2480015	12	2490015	16
3/4"	2480020	21	2490020	27
1"	2480025	23	2490025	33
1 1/4"	2480032	34	2490032	44
1 1/2"	2480040	43	2490040	56
2"	2480050	70	2490050	91
2 1/2"	2480065	174	2490065	-
3"	2480080	261	2490080	-
4"	2480100	513	2490100	-



STAINLESS STEEL Y-TYPE STRAINER - FLANGED ANSI 150

SIZE	AISI 304		AISI 316	
	MODEL	PRICE €	MODEL	PRICE €
DN15	2500015	142	2501015	208
DN20	2500020	153	2501020	214
DN25	2500025	173	2501025	221
DN32	2500032	207	2501032	258
DN40	2500040	287	2501040	326
DN50	2500050	303	2501050	372
DN65	2500065	462	2501065	582
DN80	2500080	555	2501080	726
DN100	2500100	695	2501100	900
DN125	2500125	1.056	2501125	1.278
DN150	2500150	1.166	2501150	1.664
DN200	2500200	2.285	2501200	3.264



CHECK VALVE



WAFER TYPE CHECK VALVE

SIZE	2382	2384	2385
	ST-37/304	304/304	316/316
	PRICE €	PRICE €	PRICE €
DN25	45		
DN32	49		
DN40	53	107	141
DN50	56	114	149
DN65	69	141	214
DN80	78	151	232
DN100	105	189	265
DN125	153	291	406
DN150	215	311	495
DN200	334	580	857
DN250	622	920	1.290
DN300	892	1.404	1.957

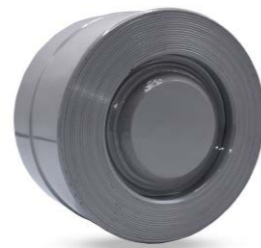


Seat : EPDM
Max. Temperature : 130°C



DISCO CHECK VALVE

SIZE	STAINLESS STEEL DISCO CHECK VALVE		BRASS DISCO CHECK VALVE		SFERO DISCO CHECK VALVE		
	MODEL	AISI 304	AISI 316	MODEL	PRICE €	MODEL	PRICE €
		PRICE €	PRICE €				
DN15	2371015	22	33	2370015	40		
DN20	2371020	34	42	2370020	43		
DN25	2371025	36	44	2370025	52		
DN32	2371032	46	61	2370032	77		
DN40	2371040	55	71	2370040	84	2373040	38
DN50	2371050	65	94	2370050	112	2373050	47
DN65	2371065	127	153	2370065	152	2373065	69
DN80	2371080	169	207	2370080	191	2373080	82
DN100	2371100	207	273	2370100	267	2373100	110
DN125	2371125	268	452			2373125	207
DN150	2371150	363	555			2373150	258
DN200	2371200	750	1.015			2373200	333



CHECK VALVE



DUAL CHECK VALVE

SIZE	IRON DISC		AISI 316 DISC	
	MODEL	PRICE €	MODEL	PRICE €
DN40	2300040	48		
DN50	2300050	61	2310050	51
DN65	2300065	69	2310065	66
DN80	2300080	88	2310080	92
DN100	2300100	93	2310100	122
DN125	2300125	116	2310125	160
DN150	2300150	147	2310150	222
DN200	2300200	183	2310200	402
DN250	2300250	328	2310250	680
DN300	2300300	394	2310300	983
DN350	2300350	652		
DN400	2300400	996		



FLEXIBLE METAL HOSES

FLEXIBLE METAL HOSES



Hose : Stainless Steel
Braid : Stainless Steel
Fittings : ST37 Carbon Steel



BRAIDED HOSE SIZE	CODE	METER PRICE €	NIPPLE PRICE €	FITTING PRICE €	FIXED FLANGE PRICE €	ROTARY FLANGE PRICE €	MAX. WORK. PRESSURE BAR
1/2"	2810015	10,1	4,1	6	14,7	23	80
3/4"	2810020	16,3	4,8	8,6	15,9	24,5	70
1"	2810025	23,7	13,4	16,7	20,2	30	64
1¼"	2810032	33,5	18,7	19,8	30,8	40,9	40
1½"	2810040	45,2	25,3	27,7	37,8	48,7	30
2"	2810050	53,8	52,6	54,5	55	63,6	28
2½"	2810065	77,2			58,5	64,8	24
3"	2810080	83			60,5	78,4	18
4"	2810100	113,5			66,6	90,8	16

EXPANSION JOINTS



METAL BELLOWS FLANGED EXPANSION JOINT WITH LIMIT ROD

SIZE	30 MM WITH LAYNER	30 MM WITHOUT LAYNER
	MODEL UKM30LR	MODEL UKM30
DN25	114	147
DN32	135	174
DN40	147	189
DN50	177	228
DN65	191	246
DN80	216	278
DN100	235	303
DN125	272	351
DN150	312	402
DN200	465	599
DN250	701	903



Bellows : Stainless Steel AISI 304
 Flange : ST37.2 Carbon Steel
 Limit Rods : ST37.2 Carbon Steel
 Layner : Stainless Steel AISI 304
 Max. Working Pressure : 16 Bar
 Max. Working Temperature : -80°C / +427°C

RUBBER EXPANSION JOINT

SIZE	MODEL UKK-30	MODEL UKK-35
	DN25	30
DN32	30	92
DN40	30	96
DN50	38	107
DN65	47	127
DN80	56	142
DN100	69	190
DN125	97	284
DN150	124	348
DN200	183	508
DN250	256	692
DN300	313	1.139



Sealing : EPDM
 Max. Working Pressure : 10 Bar
 Max. Working Temperature : 110°C
 Flange Pressure Class : PN 10/16

UKK30 Cast Iron Flanged, UKK35 Carbon Steel Flanged
 UKK40 Threaded Connection

EXPANSION JOINTS



AISI304 STAINLESS STEEL FLANGED RUBBER EXPANSION JOINT

SIZE	MODEL UKK-45
	DN25
DN32	240
DN40	280
DN50	346
DN65	426
DN80	506
DN100	559
DN125	679
DN150	826
DN200	1.145
DN250	1.465
DN300	1.865



THREADED RUBBER EXPANSION JOINT

SIZE	MODEL UKK-40
	1"
1 1/4"	25
1 1/2"	31
2"	41



EXPANSION JOINTS



METAL BELLOWS FLANGED EXPANSION JOINT

SIZE	30 MM WITH LAYNER	60 MM WITH LAYNER
	MODEL UKM30DFL	MODEL UKM60DFL
DN25	85	106
DN32	100	125
DN40	106	127
DN50	112	131
DN65	124	148
DN80	146	173
DN100	177	192
DN125	214	236
DN150	272	299
DN200	432	501
DN250	736	836



Bellows : Stainless Steel AISI 304
 Flange : ST37.2 Carbon Steel
 Layner : Stainless Steel AISI 304
 Max. Working Pressure : 16 Bar
 Max. Working Temperature : -80°C / +427°C

METAL BELLOWS FLANGED EXPANSION JOINT

SIZE	30 MM WITHOUT LAYNER	60 MM WITHOUT LAYNER
	MODEL UKM30DF	MODEL UKM60DF
DN25	71	88
DN32	83	104
DN40	96	115
DN50	101	119
DN65	120	135
DN80	140	156
DN100	162	170
DN125	196	208
DN150	251	270
DN200	386	412
DN250	649	720



Bellows : Stainless Steel AISI 304
 Flange : ST37.2 Carbon Steel
 Max. Working Pressure : 16 Bar
 Max. Working Temperature : -80°C / +427°C

EXTERNALLY PRESSURISED EXPANSION JOINTS

EXTERNALLY PRESSURISED FLANGED EXPANSION JOINT



Material : Stainless Steel
 Operating Temperature : -196°C / +600°C
 Connection : Flanged
 Pressure Class : PN16

SIZE	30 mm Expansion (-20, +10)		60 mm Expansion (-40, +20)		90 mm Expansion (-70, +20)	
	MODEL	PRICE €	MODEL	PRICE €	MODEL	PRICE €
DN25	UDBK-F0025	196	UDBK-F1025	210	UDBK-F2025	225
DN32	UDBK-F0032	213	UDBK-F1032	227	UDBK-F2032	243
DN40	UDBK-F0040	227	UDBK-F1040	241	UDBK-F2040	257
DN50	UDBK-F0050	250	UDBK-F1050	288	UDBK-F2050	308
DN65	UDBK-F0065	306	UDBK-F1065	329	UDBK-F2065	353
DN80	UDBK-F0080	366	UDBK-F1080	421	UDBK-F2080	453
DN100	UDBK-F0100	443	UDBK-F1100	480	UDBK-F2100	521
DN125	UDBK-F0125	610	UDBK-F1125	658	UDBK-F2125	709
DN150	UDBK-F0150	752	UDBK-F1150	815	UDBK-F2150	877
DN200	UDBK-F0200	1.058	UDBK-F1200	1.173	UDBK-F2200	1.232
DN250	UDBK-F0250	1.503	UDBK-F1250	1.691	UDBK-F2250	1.769

EXTERNALLY PRESSURISED EXPANSION JOINTS

EXTERNALLY PRESSURISED WELDED NECK EXPANSION JOINT



Material : Stainless Steel
 Operating Temperature : -196°C / +600°C
 Connection : Welded Neck
 Pressure Class : PN16

SIZE	30 mm Expansion (-20, +10)		60 mm Expansion (-40, +20)		90 mm Expansion (-70, +20)	
	MODEL	PRICE €	MODEL	PRICE €	MODEL	PRICE €
DN25	UDBK-K0025	145	UDBK-K1025	158	UDBK-K2025	172
DN32	UDBK-K0032	147	UDBK-K1032	160	UDBK-K2032	175
DN40	UDBK-K0040	158	UDBK-K1040	172	UDBK-K2040	187
DN50	UDBK-K0050	185	UDBK-K1050	204	UDBK-K2050	223
DN65	UDBK-K0065	205	UDBK-K1065	228	UDBK-K2065	251
DN80	UDBK-K0080	249	UDBK-K1080	279	UDBK-K2080	318
DN100	UDBK-K0100	311	UDBK-K1100	345	UDBK-K2100	386
DN125	UDBK-K0125	372	UDBK-K1125	441	UDBK-K2125	488
DN150	UDBK-K0150	519	UDBK-K1150	580	UDBK-K2150	642
DN200	UDBK-K0200	726	UDBK-K1200	836	UDBK-K2200	879
DN250	UDBK-K0250	976	UDBK-K1250	1.151	UDBK-K2250	1.214

EARTHQUAKE EXPANSION JOINTS

FLANGED EARTHQUAKE EXPANSION JOINT



X Direction: 100 mm (-50/+50 mm)
 Y Direction: 100 mm (-50/+50 mm)
 Z Direction: 100 mm (-50/+50 mm)

SIZE	MODEL	PRICE €	MODEL	PRICE €
DN25	UKMF-0025	291	UKMF-1025	308
DN32	UKMF-0032	312	UKMF-1032	331
DN40	UKMF-0040	348	UKMF-1040	397
DN50	UKMF-0050	434	UKMF-1050	441
DN65	UKMF-0065	474	UKMF-1065	504
DN80	UKMF-0080	558	UKMF-1080	593
DN100	UKMF-0100	743	UKMF-1100	790
DN125	UKMF-0125	957	UKMF-1125	985
DN150	UKMF-0150	1.215	UKMF-1150	1.249
DN200	UKMF-0200	1.977	UKMF-1200	2.025
DN250	UKMF-0250	2.641	UKMF-1250	2.705

X Direction: 100 mm (-50/+50 mm)
 Y Direction: 300 mm (-150/+150 mm)
 Z Direction: 300 mm (-150/+150 mm)

SIZE	MODEL	PRICE €	MODEL	PRICE €
DN25	UKMF-2025	314	UKMF-3025	333
DN32	UKMF-2032	351	UKMF-3032	371
DN40	UKMF-2040	405	UKMF-3040	426
DN50	UKMF-2050	468	UKMF-3050	496
DN65	UKMF-2065	516	UKMF-3065	530
DN80	UKMF-2080	611	UKMF-3080	632
DN100	UKMF-2100	815	UKMF-3100	842
DN125	UKMF-2125	1.022	UKMF-3125	1.076
DN150	UKMF-2150	1.299	UKMF-3150	1.365
DN200	UKMF-2200	2.150	UKMF-3200	2.234
DN250	UKMF-2250	2.873	UKMF-3250	2.983

EARTHQUAKE EXPANSION JOINTS

THREADED EARTHQUAKE EXPANSION JOINT



X Direction: 100 mm (-50/+50 mm)
Y Direction: 100 mm (-50/+50 mm)
Z Direction: 100 mm (-50/+50 mm)

X Direction: 100 mm (-50/+50 mm)
Y Direction: 200 mm (-100/+100 mm)
Z Direction: 200 mm (-100/+100 mm)

SIZE	MODEL	PRICE €	MODEL	PRICE €
DN25	UKMK-0025	232	UKMK-1025	253
DN32	UKMK-0032	250	UKMK-1032	278
DN40	UKMK-0040	276	UKMK-1040	292
DN50	UKMK-0050	314	UKMK-1050	368
DN65	UKMK-0065	370	UKMK-1065	396
DN80	UKMK-0080	449	UKMK-1080	460
DN100	UKMK-0100	583	UKMK-1100	599
DN125	UKMK-0125	748	UKMK-1125	772
DN150	UKMK-0150	949	UKMK-1150	1.015
DN200	UKMK-0200	1.551	UKMK-1200	1.655
DN250	UKMK-0250	1.996	UKMK-1250	2.067

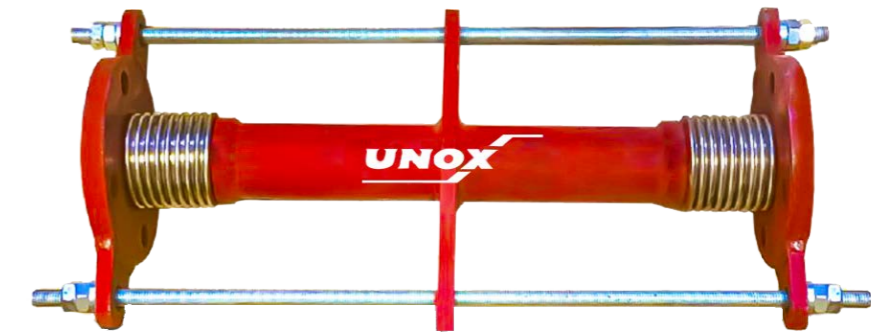
X Direction: 100 mm (-50/+50 mm)
Y Direction: 300 mm (-150/+150 mm)
Z Direction: 300 mm (-150/+150 mm)

X Direction: 100 mm (-50/+50 mm)
Y Direction: 400 mm (-200/+200 mm)
Z Direction: 400 mm (-200/+200 mm)

SIZE	MODEL	PRICE €	MODEL	PRICE €
DN25	UKMK-2025	269	UKMK-3025	274
DN32	UKMK-2032	296	UKMK-3032	301
DN40	UKMK-2040	310	UKMK-3040	316
DN50	UKMK-2050	375	UKMK-3050	399
DN65	UKMK-2065	424	UKMK-3065	436
DN80	UKMK-2080	495	UKMK-3080	513
DN100	UKMK-2100	646	UKMK-3100	672
DN125	UKMK-2125	809	UKMK-3125	857
DN150	UKMK-2150	1.065	UKMK-3150	1.131
DN200	UKMK-2200	1.778	UKMK-3200	1.859
DN250	UKMK-2250	2.231	UKMK-3250	2.343

DILATATION EXPANSION JOINTS

FLANGED DILATATION EXPANSION JOINT WITH LIMIT ROD



Sideways ±25mm

Sideways ±50mm

SIZE	MODEL	PRICE €	MODEL	PRICE €
DN25	UDKF-0025	192	UDKF-1025	195
DN32	UDKF-0032	201	UDKF-1032	205
DN40	UDKF-0040	208	UDKF-1040	213
DN50	UDKF-0050	281	UDKF-1050	287
DN65	UDKF-0065	306	UDKF-1065	313
DN80	UDKF-0080	367	UDKF-1080	376
DN100	UDKF-0100	405	UDKF-1100	416
DN125	UDKF-0125	544	UDKF-1125	577
DN150	UDKF-0150	677	UDKF-1150	719
DN200	UDKF-0200	1.158	UDKF-1200	1.236
DN250	UDKF-0250	1.730	UDKF-1250	1.838

Sideways ±75mm

Sideways ±100mm

SIZE	MODEL	PRICE €	MODEL	PRICE €
DN25	UDKF-2025	199	UDKF-3025	199
DN32	UDKF-2032	209	UDKF-3032	209
DN40	UDKF-2040	217	UDKF-3040	217
DN50	UDKF-2050	293	UDKF-3050	293
DN65	UDKF-2065	320	UDKF-3065	320
DN80	UDKF-2080	385	UDKF-3080	385
DN100	UDKF-2100	427	UDKF-3100	427
DN125	UDKF-2125	592	UDKF-3125	592
DN150	UDKF-2150	737	UDKF-3150	737
DN200	UDKF-2200	1.271	UDKF-3200	1.271
DN250	UDKF-2250	1.900	UDKF-3250	1.900

DILATATION EXPANSION JOINTS

WELDED NECK DILATATION EXPANSION JOINT WITH LIMIT ROD



SIZE	Sideways ± 25 mm		Sideways ± 50 mm	
	MODEL	PRICE €	MODEL	PRICE €
DN25	UDKK-0025	185	UDKK-1025	188
DN32	UDKK-0032	192	UDKK-1032	196
DN40	UDKK-0040	199	UDKK-1040	203
DN50	UDKK-0050	224	UDKK-1050	229
DN65	UDKK-0065	236	UDKK-1065	241
DN80	UDKK-0080	292	UDKK-1080	299
DN100	UDKK-0100	340	UDKK-1100	348
DN125	UDKK-0125	426	UDKK-1125	454
DN150	UDKK-0150	518	UDKK-1150	554
DN200	UDKK-0200	808	UDKK-1200	867
DN250	UDKK-0250	1.065	UDKK-1250	1.153

SIZE	Sideways ± 75 mm		Sideways ± 100 mm	
	MODEL	PRICE €	MODEL	PRICE €
DN25	UDKK-2025	192	UDKK-3025	195
DN32	UDKK-2032	201	UDKK-3032	205
DN40	UDKK-2040	208	UDKK-3040	212
DN50	UDKK-2050	234	UDKK-3050	239
DN65	UDKK-2065	247	UDKK-3065	252
DN80	UDKK-2080	307	UDKK-3080	314
DN100	UDKK-2100	358	UDKK-3100	368
DN125	UDKK-2125	466	UDKK-3125	480
DN150	UDKK-2150	569	UDKK-3150	588
DN200	UDKK-2200	898	UDKK-3200	931
DN250	UDKK-2250	1.199	UDKK-3250	1.235



FANTINI COSMI

VACUUM PRESSURE SWITCH

MODEL	RANGE	PRICE €
B 12 AN	-0,82 ÷ 0 Bar	208



PRESSURE SWITCH

MODEL	RANGE	PRICE €
B 12 BN	0,2 ÷ 2 Bar	156
B 12 CN	-0,2 ÷ 8 Bar	111
B 12 DN	5 ÷ 16 Bar	117
B 12 EN	8 ÷ 28 Bar	143
B 12 FN	12 ÷ 50 Bar	169
B 12 GN	25 ÷ 150 Bar	182
B 12 HN	60 ÷ 300 Bar	195
B 13 CN	1 ÷ 10 Bar	143
B 01 A	0,7 ÷ 3 Bar	52
B 01 B	2 ÷ 5,5 Bar	52
B 01 C	3 ÷ 7 Bar	52
B 01 D	4 ÷ 15 Bar	52



PRESSURE SWITCHES FOR THREE-PHASE MOTORS DIRECT CONTROL

MODEL	RANGE	PRICE €
B 70 A	0,5 ÷ 7 Bar	72



ELECTROMECHANICAL SUBMERSIBLE LEVEL CONTROLS FOR OPEN TANKS

MODEL	PRICE €
A 95 A (3 m cable)	65
A 95 B (10 m cable)	85

Adjustable Distance : 750 mm
 Suitable Liquid Density : 0.65 - 1.50 gr / cm²
 Cable Diameter : 10 mm
 Energy : 250 V AC - 50 Hz
 Working Temperature : -25°C / +60°C
 Protection Class : IP67



ELECTROMECHANICAL FLOAT SWITCH FOR THREE-PHASE MOTOR CONTROL

MODEL	PRICE €
A 70	98



HUMIDISTATS FOR WALL MOUNTING

MODEL	PRICE €
L 24 EM 2 DIGITAL	221
LS 160 A SENSOR	481



ELECTRONIC ROOM HUMIDISTAT

MODEL	PRICE €
D 40	221



ELECTRONIC LEVEL CONTROLS WITH PROBES FOR CONDUCTIVE LIQUIDS

MODEL	PRICE €
A 03 M (Automatic)	169
A 04 M (Manual)	195

Working Temperature : -10°C / +50°C
 Protection Class : IP20
 Energy : 230 V



THE LEVEL DIFFERENCE IS ADJUSTED BY THE LENGHT OF THE ELECTRODES.

LIQUID SURVEY ELECTRODE HOLDERS PROBE FOR ELECTRONIC LEVEL CONTROLS

MODEL	PRICE €
EA 18	52
EA 20	104
EA 21	117

EA18

Probe Holder : Stainless Steel AISI 303
 Max. Working Pressure : 10 Bar
 Max. Working Temperature : 160°C
 Connection : 3/8" Nipple

EA20

Probe Holder : Stainless Steel AISI 303
 Max. Working Pressure : 35 Bar
 Max. Working Temperature : 250°C
 Connection : 3/8" Nipple

EA21

Probe Holder : Stainless Steel AISI 316 PVC Coated 6 m Cable Resistive Probe
 Max. Working Temperature : 160°C



ELECTROMECHANICAL ROOM THERMOSTATS WITH VAPOR EXPANSION

MODEL		PRICE €
C 16	10°C - 30°C ON-OFF SENSITIVITY 1° IP20	33
C 16 IL	10°C - 30°C LIGHT ON-OFF SENSITIVITY 1° IP20	52
C 60	6°C - 30°C SENSITIVITY 0.5°C IP20	85
C 61	6°C - 30°C SENSITIVITY 0.5°C 3 SPEED 2 POSITION FAN COIL IP20	98
CH 110	2°C - 40°C HEATING DIFF 2°C - 40°C COOLING DIGITAL 0.7°C	104



LEVEL CONTROLLER



COMPATIBLE WITH TSEK 2270 STANDART

MODEL	PRICE €
A-1	880
A-2	955
A-2F	1040

Body : GGG40.3 Ductile Iron
 Float : Stainless Steel AISI 316
 Shaft : Stainless Steel AISI 316
 Bellows : Stainless Steel AISI 316
 Connection : A-1 / A-2 BSPTB Threaded A-2F DN25 Flanged
 Pressure : PN16



GENERAL CONDITIONS OF SALE

- 1- We are not obligated to provide service and service to the products purchased other than our authorized dealers.
- 2- For products with prices in USD and EURO in our general price list, the CBRT foreign currency exchange rate on the invoice date Based on the sales rate, the invoice will be issued in Turkish Lira and the payment will be made in Turkish Lira.
- 3- Our prices do not include VAT.
- 4- Prices given for special projects are given considering the quantities in the offer. Even if it is a continuation, the prices given for individual purchases are not valid.
- 5- We are not obliged to provide service and service to products that do not have an invoice or a waybill.
- 6- Invoices that are not paid as agreed and on time interest rate is accrued.
- 7- Bought from our authorized dealers and selection, assembly etc. correct made products invoice issued. It is under our warranty for 24 months against defects in material and workmanship starting from the date of.
- 8- In order for our shipped products to be returned to our company later, the boxes must be in their original packages. It must be unopened. It is not possible to return products that have been opened or connected to the installation.
- 9- In case of returning the standard products sold, 20% deduction from the return amount will be done. (Return shipping belongs to the user.)
- 10- Since the products ordered for special projects are specially manufactured for our customers, Our customers cannot avoid receiving the product, it cannot be returned or exchanged.
- 11- Return period is maximum 7 days from the invoice date.
- 12- In product replacement transactions, if the subject product is included in our general price list and its box or If the original package is not opened, it can be replaced with another product.
- 13- In order to cancel confirmed orders, a written statement must be made within the same day.
- 14- The place of delivery of the products is our company's Kocaeli central warehouse address. Delivery to address, courier or express. This price will be invoiced when delivery is requested.
- 15- In your orders to our company, the type of product ordered, the type of fluid used, pressure, temperature, density, etc. All information must be provided completely and accurately. Our company is not responsible for the problems that may occur.
- 16- In cases where the delivery time is determined by a written contract made at the order stage and not confirmed by our company, our company delivers as soon as possible. In cases where the delivery time is not confirmed by the written contract, our company does not pay any delay penalty.
- 17- When legal resolution of disputes is required, Istanbul courts are authorized.
- 18- Our company reserves the right to make price changes without notice. It does not accept responsibility for any printing and typographical errors.

AFTER SALES SERVICES AND GENERAL WARRANTY CONDITIONS

General Information,
The products in our sales program are under the guarantee of our company.

- 1- The warranty period is 24 months from the invoice date. Usage errors are not covered by the warranty.
- 2- Along with the product sent for malfunction or maintenance; place of use, connection type, type of fluid used, pressure, temperature, density, etc. all information is complete, as well as the user's transportation address information must come.
- 3- Whether the product's defect is covered by the warranty is determined by the tests to be carried out. During this period, the product a new one cannot be given. If the customer wishes, he can buy and install a new one, and as a result of the test, it is decided that the product is under warranty. If given, the customer will be refunded.

Situations Out of Warranty Coverage;

- 1- Procured from persons and organizations whose origin is unknown, do not have an invoice or are not authorized by our company products.
- 2- Products whose invoice is not submitted.
- 3- Damages and malfunctions caused by non-purpose use.
- 4- Damages and malfunctions caused by incorrect assembly, incorrect and incomplete installation.
- 5- Damages and malfunctions caused by transportation, shaking, storage, physical impacts, chemical factors and environmental conditions.
- 6- Damages and malfunctions caused by fire, lightning, flood, earthquake, freezing and other disasters.
- 7- Damages and malfunctions caused by fluid pollution.





Factory: İnönü Gebze Plastikçiler OSB
Cumhuriyet Cad. No: 67 Gebze/Kocaeli, Türkiye
Tel: +90 (262) 502 11 48
Fax: +90 (262) 502 11 52
E-mail: info@unox.com.tr

TEK PA
DIŞ TİCARET VE PAZARLAMA LTD. ŞTİ.



Export:
Tel: +90 (501) 334 53 36
E-mail: export@unox.com.tr